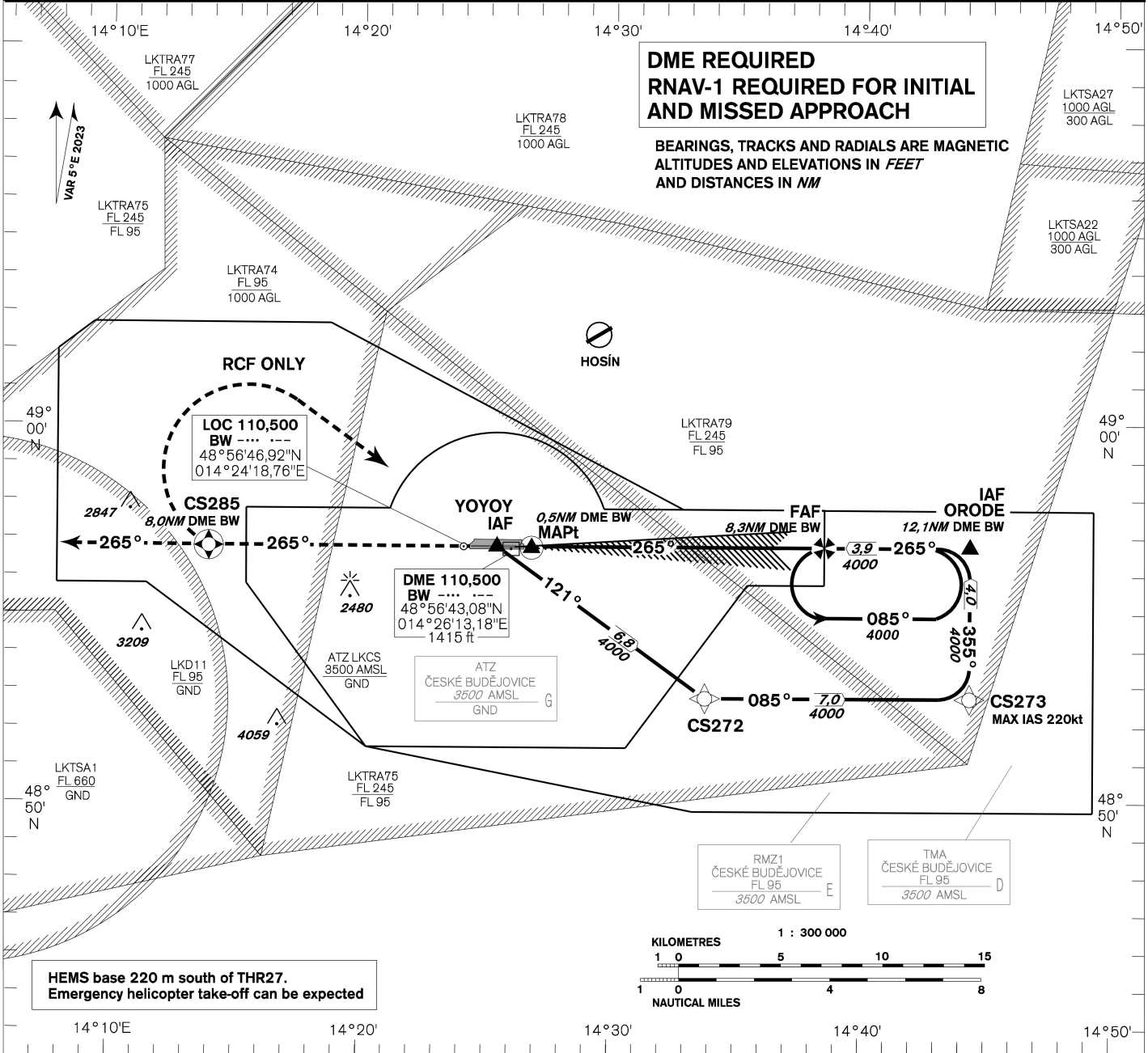


## INSTRUMENT APPROACH CHART - ICAO

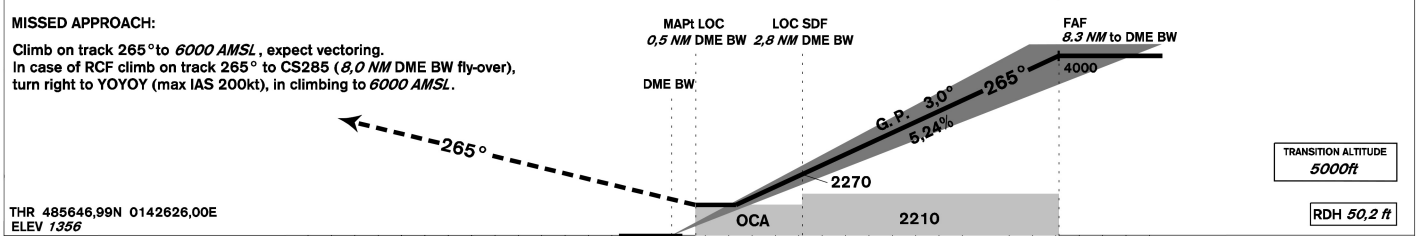
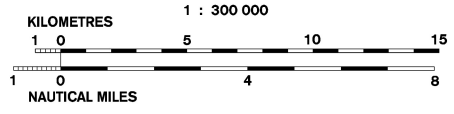
**AERODROME ELEV 1417 ft**  
**THR RWY 09 ELEV 1356 ft**  
**OCH RELATED TO THR RWY 27**

**PRAHA RADAR 118,650**  
**BUDĚJOVICE INFORMATION 135,930**  
**PRAHA FIC 126,100**  
**EMERGENCY FREQ. 121,500**

**ČESKÉ BUDĚJOVICE ILS**  
**RWY 27**



**HEMS base 220 m south of THR27.**  
**Emergency helicopter take-off can be expected**



missed approach gradient 2,5%					
OCA / OCH		A	B	C	D
CAT I	ft	1848/ 492	1861/ 504	1869/ 512	1879/ 523
LOC	ft	2020/ 670			
CIRCLING (south of AD only)	ft	2070/-	2170/-	2880/-	2920/-

missed approach gradient 4,0%					
OCA / OCH		A	B	C	D
CAT I	ft	1556/ 200	1563/ 207	1571/ 215	1582/ 225
LOC	ft	1680/ 320			
CIRCLING (south of AD only)	ft	2070/-	2170/-	2880/-	2920/-

DIST BW NM	8	7	6	5	4	3	2	1
DIST THR NM	7,86	6,86	5,86	4,86	3,86	2,86	1,86	0,86
ALTITUDES ft	3910	3590	3270	2950	2640	2320	2000	1680

FAF - MAPt 7,8 NM	kt	80	100	120	140	160	180
min:sec		5:51	4:40	3:54	3:20	2:55	2:36
Rate of descent (5,24%)	ft/min	420	530	640	740	850	960