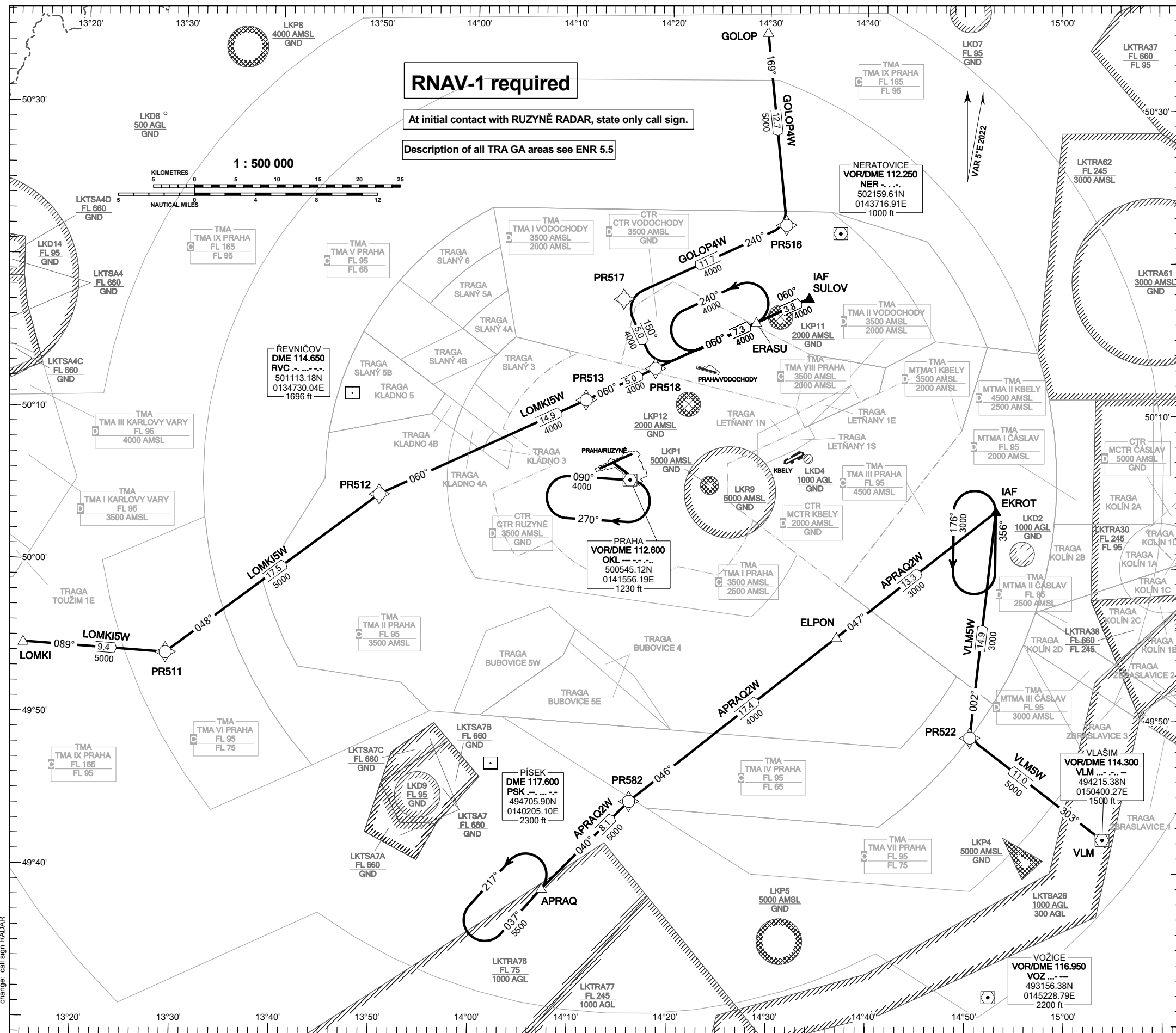


**RNAV STANDARD ARRIVAL CHART - INSTRUMENT
(STAR) - ICAO**

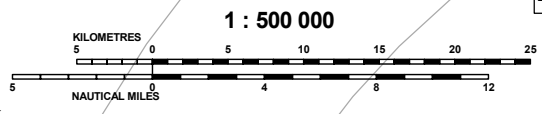
**KBELY
RNAV STAR RWY 24**



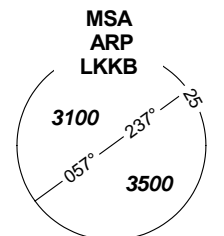
RNAV-1 required

At initial contact with RUZYNĚ RADAR, state only call sign.

Description of all TRA GA areas see ENR 5.5



KBELY RADAR	124.680
KBELY TOWER	291.050 (reserve)
KBELY PRECISION	120.880
	134.730 (reserve)
	126.760
	123.300 (reserve)
	315.000 (reserve)



BEARINGS, TRACKS AND RADIALS ARE MAGNETIC
ALTITUDES AND ELEVATIONS
ARE IN FEET
DISTANCES ARE IN NM

TRANSITION ALTITUDE
5000