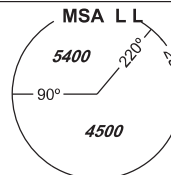


INSTRUMENT APPROACH CHART - ICAO

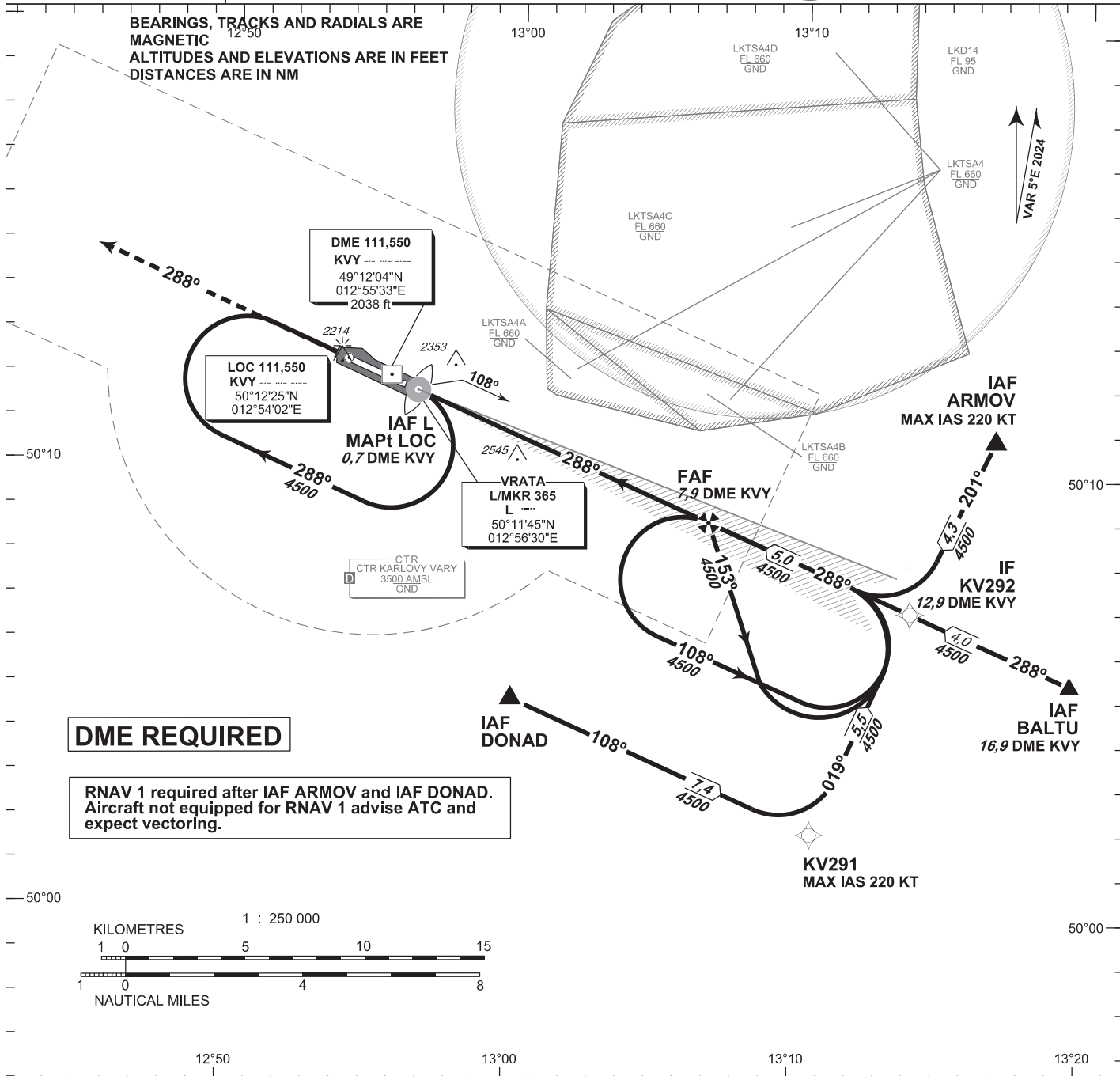
AERODROME ELEV **1989**
THR RWY 29 ELEV **1985**

PRAHA RADAR 118,650
VARY TOWER 121,230
121,500



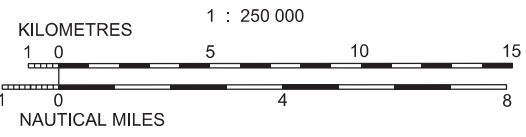
KARLOVY VARY ILS RWY 29

BEARINGS, TRACKS AND RADIALS ARE MAGNETIC
ALTITUDES AND ELEVATIONS ARE IN FEET
DISTANCES ARE IN NM



DME REQUIRED

RNAV 1 required after IAF ARMOV and IAF DONAD. Aircraft not equipped for RNAV 1 advise ATC and expect vectoring.

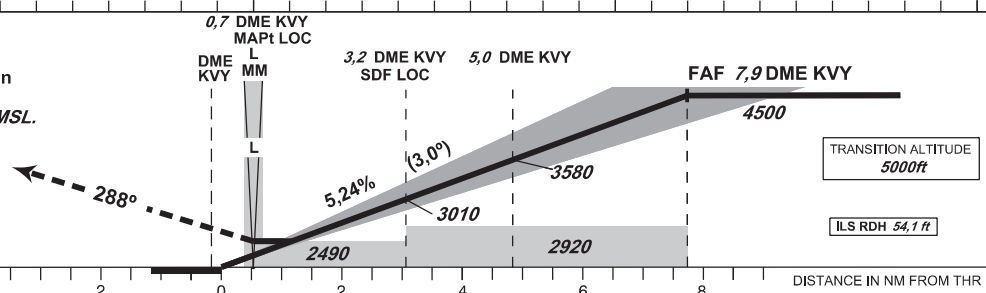


MISSED APPROACH:

Climb on track 288° to 5000 ft AMSL, expect vectoring. In case of RCF climb on track 288° to 8,0 NM DME KVV and turn right to L L in climbing to 5000 ft AMSL.

THR 501157.33N, 0125544.30E
ELEV 1985

NM FROM THR 29 4 2 0 2 4 6 8 DISTANCE IN NM FROM THR RWY 29



TRANSITION ALTITUDE 5000ft
ILS RDH 54,1 ft

OCA/OCH		A	B	C	D
Cat I	ft	2194/210	2206/221	2214/229	2225/240
LOC	ft	2400/410			
Circling (south of AD only)	ft	2520/530	2520/530	2970/980	3160/1170

DME KVV (NM)		7	6	5	4	3	2	1
DIST THR (NM)		6,85	5,85	4,85	3,85	2,85	1,85	0,85
ALTITUDES (ft)		4220	3900	3580	3260	2940	2620	2310
LOC	kt	80	100	120	140	160		
FAF - MAPt 7,2 NM	min:sec	5:24	4:20	3:36	3:05	2:42		
Rate of descent (5,24%)	ft/min	420	530	640	740	850		

change: VAR, MAG tracks, designations

Timing is not authorized for defining the MAPt.

INITIAL APPROACH ILS RWY 29

Recommended coding:

Path Terminator	Waypoint				Cours / Track MAG° (True°)	DIST NM	Turn Direction	Constraints		Nav Spec.	Remarks
	ID	Type	Flyover	Coordinates				Level	Speed		
via ARMOV											
IF	ARMOV	IAF	NO	501050.76N 0131650.52E	---	---	---	A4500+	K220-	RNAV 1	---
TF	KV292	IF	NO	500656.23N 0131356.91E	201 (205.46)	4.3	---	---	---	RNAV 1	---
via DONAD											
IF	DONAD	IAF	NO	500450.93N 0130000.00E	---	---	---	A4500+	---	RNAV 1	---
TF	KV291	---	NO	500155.29N 0131035.25E	108 (113.17)	7.4	---	---	K220-	RNAV 1	---
TF	KV292	IF	NO	500656.23N 0131356.91E	019 (023.31)	5.5	LEFT	---	---	RNAV 1	---

ILS CAT I or LOC APPROACH RWY 29

Descent angle (°)	3.00			
Type	IF	FAF/FAP	SDF LOC	MAPt LOC
Fix	KV292 (12.9 DME KVY)	(7.9 DME KVY)	(3.2 DME KVY)	(0.7 DME KVY)
Fix coordinates	500656.23N 0131356.91E	500854.77N 0130648.58E	501045.62N 0130005.83E	501144.84N 0125630.07E
Fix formation bearing (True°)	113.11 LOC KVY	113.11 LOC KVY	113.12 LOC KVY	---
Fix formation distances (NM)	12.89 DME KVY	7.89 DME KVY	3.20 DME KVY	0.68 DME KVY

