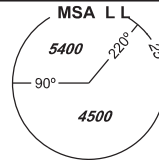


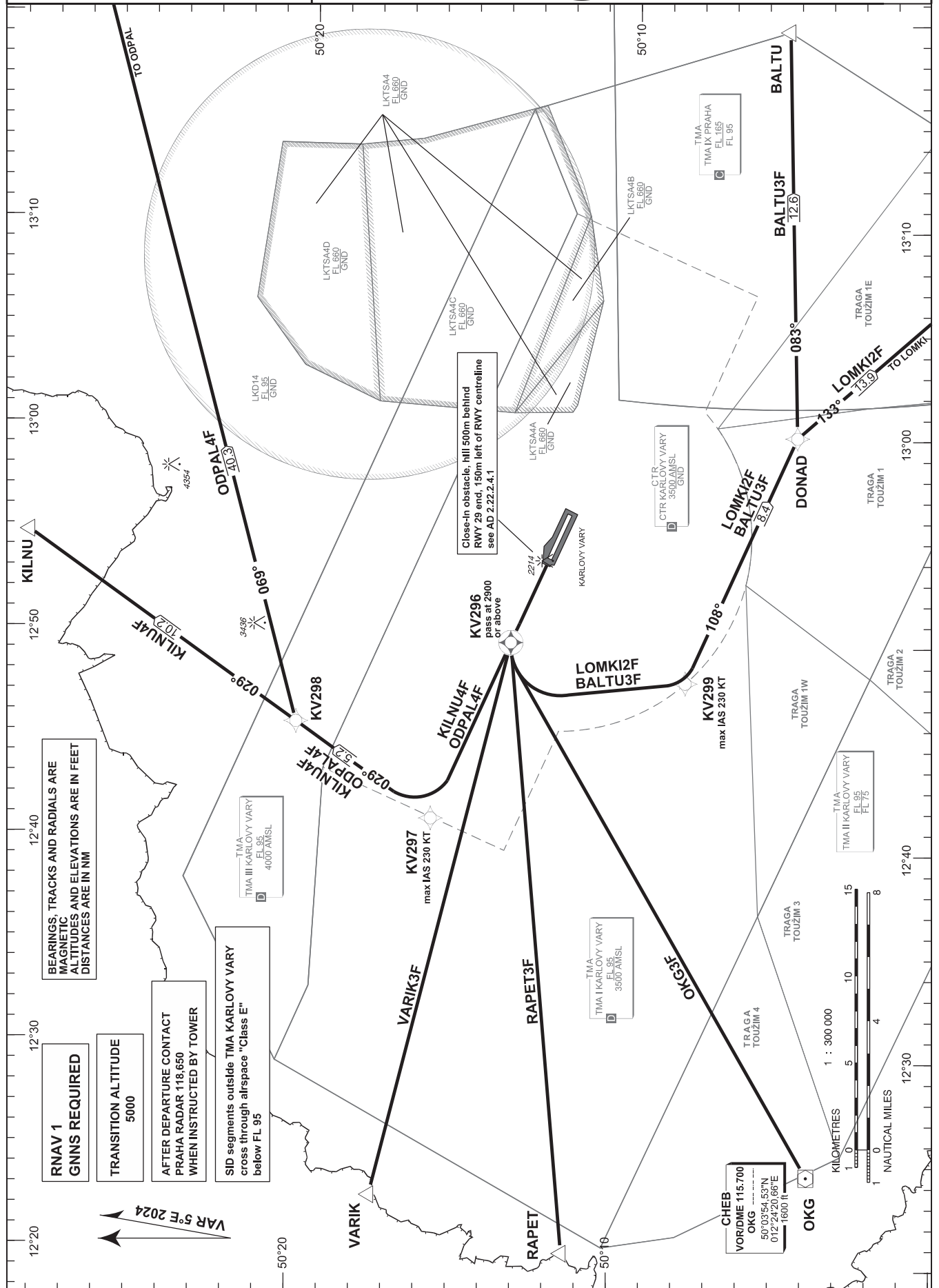
STANDARD DEPARTURE CHART - INSTRUMENT (SID) - ICAO

PRAHA RADAR	118.650
VARY TOWER	121.230
KARLOVY VARY ATIS	127.640
EMERGENCY FREQ	121.500



KARLOVY VARY RNAV RWY 29

BALTU3F KILNU4F LOMKI2F ODPAL4F
OKG3F RAPET3F VARIK3F



BEARINGS, TRACKS AND RADIALS ARE
MAGNETIC
ALTITUDES AND ELEVATIONS ARE IN FEET
DISTANCES ARE IN NM

RNAV 1
GNSS REQUIRED

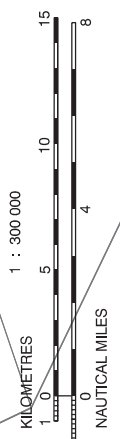
TRANSITION ALTITUDE
5000

AFTER DEPARTURE CONTACT
PRAHA RADAR 118.650
WHEN INSTRUCTED BY TOWER

SID segments outside TMA KARLOVY VARY
cross through airspace "Class E"
below FL 95

VAR 5°E 2024

CHEB
VOR/DME 115.700
OKG
50°03'54.153"N
012°29'06"E
1600 ft



change: VAR, MAG tracks, designations

The design of SIDs assumes climb gradient 3,3%, MAX IAS 250 kt below FL100. If a greater climb gradient or a speed reduction are required, it is indicated in the description of the route. Recommended coding:

Designator		Route				After Departure					Remarks
						Initial climb to		Expect FREQ			
Path Terminator	Waypoint			Cours / Track MAG° (True°)	DIST NM	Turn Direction	Constraints		Nav Spec.	Remarks	
	ID	Flyover	Coordinates				Level	Speed			
BALTU3F (BALTU THREE FOXTROT DEPARTURE)		Climb direct to KV296 - KV299 - DONAD - BALTU				According to ATC clearance		PRAHA RADAR 118,650 MHz (when instructed)		Average climb gradient to reach KV296 at 2900 ft MSL is 5 %, thereafter 3,3 %.	
DF	KV296	YES	501334.82N 0124947.45E	---	---	---	A2900+	---	RNAV 1	---	
DF	KV299	NO	500808.00N 0124801.50E	---	---	LEFT	---	K230-	RNAV 1	---	
TF	DONAD	NO	500450.93N 0130000.00E	108 (113.02)	8.4	LEFT	---	---	RNAV 1	---	
TF	BALTU	NO	500522.06N 0131935.48E	083 (087.52)	12.6	LEFT	---	---	RNAV 1	---	
LOMKI2F (LOMKI TWO FOX-TROT DEPARTURE)		Climb direct to KV296 - KV299 - DONAD - LOMKI				According to ATC clearance		PRAHA RADAR 118,650 MHz (when instructed)		Average climb gradient to reach KV296 at 2900 ft MSL is 5 %, thereafter 3,3 %.	
DF	KV296	YES	501334.82N 0124947.45E	---	---	---	A2900+	---	RNAV 1	---	
DF	KV299	NO	500808.00N 0124801.50E	---	---	LEFT	---	K230-	RNAV 1	---	
TF	DONAD	NO	500450.93N 0130000.00E	108 (113.02)	8.4	LEFT	---	---	RNAV 1	---	
TF	LOMKI	NO	495433.61N 0131428.40E	133 (137.70)	13.9	RIGHT	---	---	RNAV 1	---	
OKG3F (OKG THREE FOX-TROT DEPARTURE)		Climb direct to KV296 - OKG				According to ATC clearance		PRAHA RADAR 118,650 MHz (when instructed)		Average climb gradient to reach KV296 at 2900 ft MSL is 5 %, thereafter 3,3 %.	
DF	KV296	YES	501334.82N 0124947.45E	---	---	---	A2900+	---	RNAV 1	---	
DF	OKG	NO	500354.53N 0122420.66E	---	---	LEFT	---	---	RNAV 1	---	
RAPET3F (RAPET THREE FOXTROT DEPARTURE)		Climb direct to KV296 - RAPET				According to ATC clearance		PRAHA RADAR 118,650 MHz (when instructed)		Average climb gradient to reach KV296 at 2900 ft MSL is 5 %, thereafter 3,3 %.	
DF	KV296	YES	501334.82N 0124947.45E	---	---	---	A2900+	---	RNAV 1	---	
DF	RAPET	NO	501125.7600N 0122019.1000E	---	---	LEFT	---	---	RNAV 1	---	
VARIK3F (VARIK THREE FOX-TROT DEPARTURE)		Climb direct to KV296 - VARIK				According to ATC clearance		PRAHA RADAR 118,650 MHz (when instructed)		Average climb gradient to reach KV296 at 2900 ft MSL is 5 %, thereafter 3,3 %.	
DF	KV296	YES	501334.82N 0124947.45E	---	---	---	A2900+	---	RNAV 1	---	
DF	VARIK	NO	501728.0000N 0122252.0000E	---	---	LEFT	---	---	RNAV 1	---	
ODPAL4F (ODPAL FOUR FOX-TROT DEPARTURE)		Climb direct to KV296 - KV297 - KV298 - ODPAL				According to ATC clearance		PRAHA RADAR 118,650 MHz (when instructed)		Average climb gradient to reach KV296 at 2900 ft MSL is 5 %, thereafter 3,3 %.	
DF	KV296	YES	501334.82N 0124947.45E	---	---	---	A2900+	---	RNAV 1	---	
DF	KV297	NO	501555.15N 0124111.24E	---	---	---	---	K230-	RNAV 1	---	
TF	KV298	NO	502011.15N 0124542.80E	029 (034.16)	5.2	RIGHT	---	---	RNAV 1	---	
TF	ODPAL	NO	503101.67N 0134627.80E	069 (074.00)	40.3	RIGHT	---	---	RNAV 1	---	
KILNU4F (KILNU FOUR FOX-TROT DEPARTURE)		Climb direct to KV296 - KV297 - KV298 - KILNU				According to ATC clearance		PRAHA RADAR 118,650 MHz (when instructed)		Average climb gradient to reach KV296 at 2900 ft MSL is 5 %, thereafter 3,3 %.	
DF	KV296	YES	501334.82N 0124947.45E	---	---	---	A2900+	---	RNAV 1	---	
DF	KV297	NO	501555.15N 0124111.24E	---	---	---	---	K230-	RNAV 1	---	
TF	KV298	NO	502011.15N 0124542.80E	029 (034.16)	5.2	RIGHT	---	---	RNAV 1	---	
TF	KILNU	NO	502836.6800N 0125441.9700E	029 (034.16)	10.2	---	---	---	RNAV 1	---	

