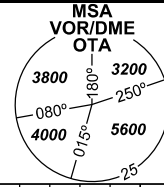


# INSTRUMENT APPROACH CHART - ICAO

AERODROME ELEV 842  
THR RWY 22 ELEV 808

PRAHA RADAR 119,375  
121,500  
MOŠNOV TOWER 120,805  
121,500

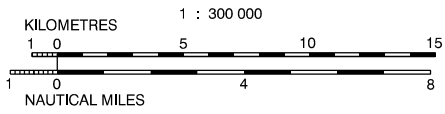
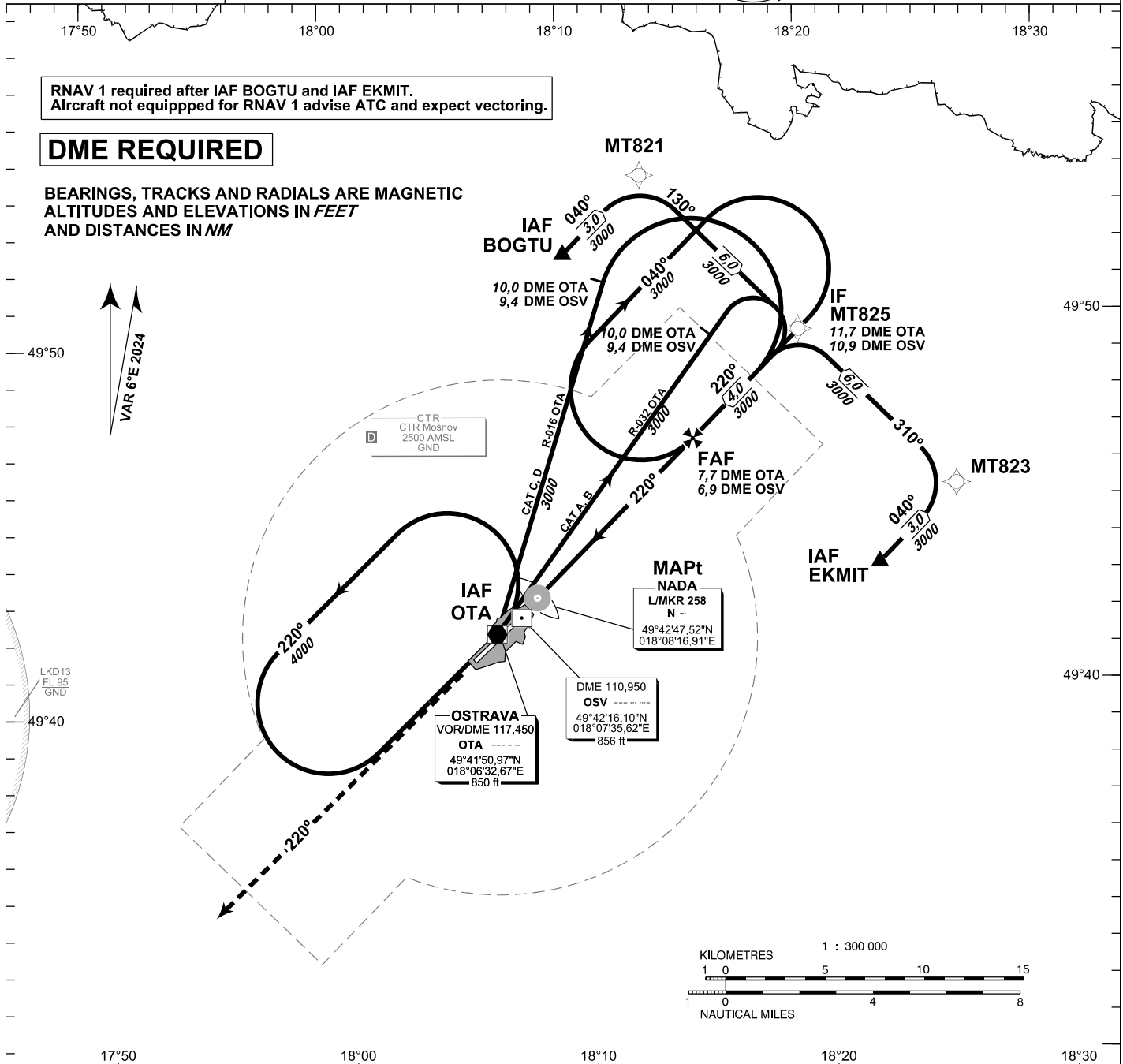


**OSTRAVA/Mošnov**  
**NDB**  
**RWY 22**

RNAV 1 required after IAF BOGTU and IAF EKMIT.  
Aircraft not equipped for RNAV 1 advise ATC and expect vectoring.

## DME REQUIRED

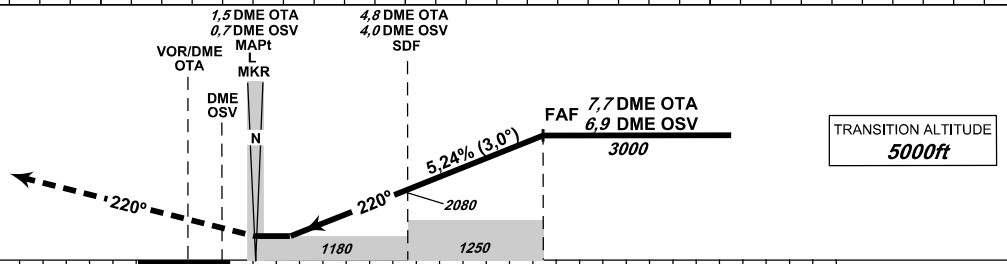
BEARINGS, TRACKS AND RADIALS ARE MAGNETIC  
ALTITUDES AND ELEVATIONS IN FEET  
AND DISTANCES IN NM



### MISSED APPROACH:

Climb on track 220° to 4000 ft AMSL  
expect vectoring  
In case of RFC climb on track 220°  
to 8,0 NM DME OTA and  
turn right to VOR/DME OTA  
in climbing to 4000 ft AMSL

THR 494225.64N, 0180742.39E  
ELEV 808



6 4 2 0 2 4 6 8 10 12 14 16 18 20 22 24 26 28 30 32 34 36 38 40 42 44 46 48 50 52 54 56 58 60 62 64 66 68 70 72 74 76 78 80 82 84 86 88 90 92 94 96 98 100 NM FM THR22

| OCA/OCH              |    | A          | B          | C          | D           | DME OSV NM | 6    | 5    | 4    | 3    | 2    | 1    |
|----------------------|----|------------|------------|------------|-------------|------------|------|------|------|------|------|------|
| Straight-in Approach | ft | 1180 / 370 |            |            |             |            | 6,8  | 5,8  | 4,8  | 3,8  | 2,8  | 1,8  |
| Circling             | ft | 1400 / 560 | 1440 / 600 | 1690 / 850 | 2100 / 1260 |            | 5,8  | 4,8  | 3,8  | 2,8  | 1,8  | 0,8  |
|                      |    |            |            |            |             |            | 2720 | 2400 | 2080 | 1760 | 1440 | 1120 |

|                         | ft      | 80   | 100  | 120  | 140  | 160  | 180  |
|-------------------------|---------|------|------|------|------|------|------|
| FAF - MAPt 6,2 NM       | min:sec | 4:39 | 3:43 | 3:06 | 2:39 | 2:19 | 2:04 |
| Rate of descent (5,24%) | ft/min  | 420  | 330  | 640  | 740  | 850  | 960  |

change: VAR, chart revision

Timing is not authorized for defining the MAPt.

## INITIAL APPROACH NDB RWY 22

Recommended coding:

| Path Terminator  | Waypoint |      |         |                        | Cours / Track<br>MAG° (True°) | DIST<br>NM | Turn<br>Direction | Constraints |       | Nav<br>Spec. | Remarks |
|------------------|----------|------|---------|------------------------|-------------------------------|------------|-------------------|-------------|-------|--------------|---------|
|                  | ID       | Type | Flyover | Coordinates            |                               |            |                   | Level       | Speed |              |         |
| via <b>BOGTU</b> |          |      |         |                        |                               |            |                   |             |       |              |         |
| IF               | BOGTU    | IAF  | NO      | 495204.59N 0180955.48E | ---                           | ---        | ---               | A3000+      | ---   | RNAV 1       | ---     |
| TF               | MT821    | ---  | NO      | 495408.55N 0181316.88E | 040 (046.37)                  | 3.0        | ---               | ---         | ---   | RNAV 1       | ---     |
| TF               | MT825    | IF   | NO      | 494948.05N 0181939.97E | 130 (136.41)                  | 6.0        | RIGHT             | ---         | ---   | RNAV 1       | ---     |
| via <b>EKMIT</b> |          |      |         |                        |                               |            |                   |             |       |              |         |
| IF               | EKMIT    | IAF  | NO      | 494323.64N 0182240.63E | ---                           | ---        | ---               | A3000+      | ---   | RNAV 1       | ---     |
| TF               | MT823    | ---  | NO      | 494527.22N 0182601.91E | 040 (046.53)                  | 3.0        | ---               | ---         | ---   | RNAV 1       | ---     |
| TF               | MT825    | IF   | NO      | 494948.05N 0181939.97E | 310 (316.57)                  | 6.0        | LEFT              | ---         | ---   | RNAV 1       | ---     |

## APPROACH NDB RWY 22

| Descent angle (°)             | 3.00                                      |                                |                                |   |
|-------------------------------|---|--------------------------------|--------------------------------|---|
| Type                          | IF  | FAF                            | SDF                            | MAPt                                    |
| Fix                           | MT825<br>(11.7 DME OTA)<br>(10.9 DME OSV) | (7.7 DME OTA)<br>(6.9 DME OSV) | (4.8 DME OTA)<br>(4.0 DME OSV) | NDB N<br>(1.5 DME OTA)<br>(0.7 DME OSV) |
| Fix coordinates               | 494948.05N 0181939.97E                    | 494703.83N 0181512.87E         | 494504.48N 0181158.95E         | 494247.52N 0180816.91E                  |
| Fix formation bearing (True°) | 046.38 NDB N                              | 046.39 NDB N                   | 046.39 NDB N                   | ---                                     |
| Fix formation distances (NM)  | 11.65 DME OTA<br>10.87 DME OSV            | 7.67 DME OTA<br>6.89 DME OSV   | 4.78 DME OTA<br>4.00 DME OSV   | 1.47 DME OTA<br>0.69 DME OSV            |

