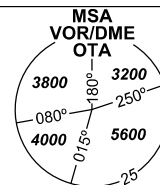


INSTRUMENT APPROACH CHART - ICAO

AERODROME ELEV 842
THR RWY 22 ELEV 808

PRAHA RADAR 119,375
121,500
MOŠNOV TOWER 120,805
121,500



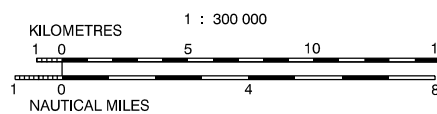
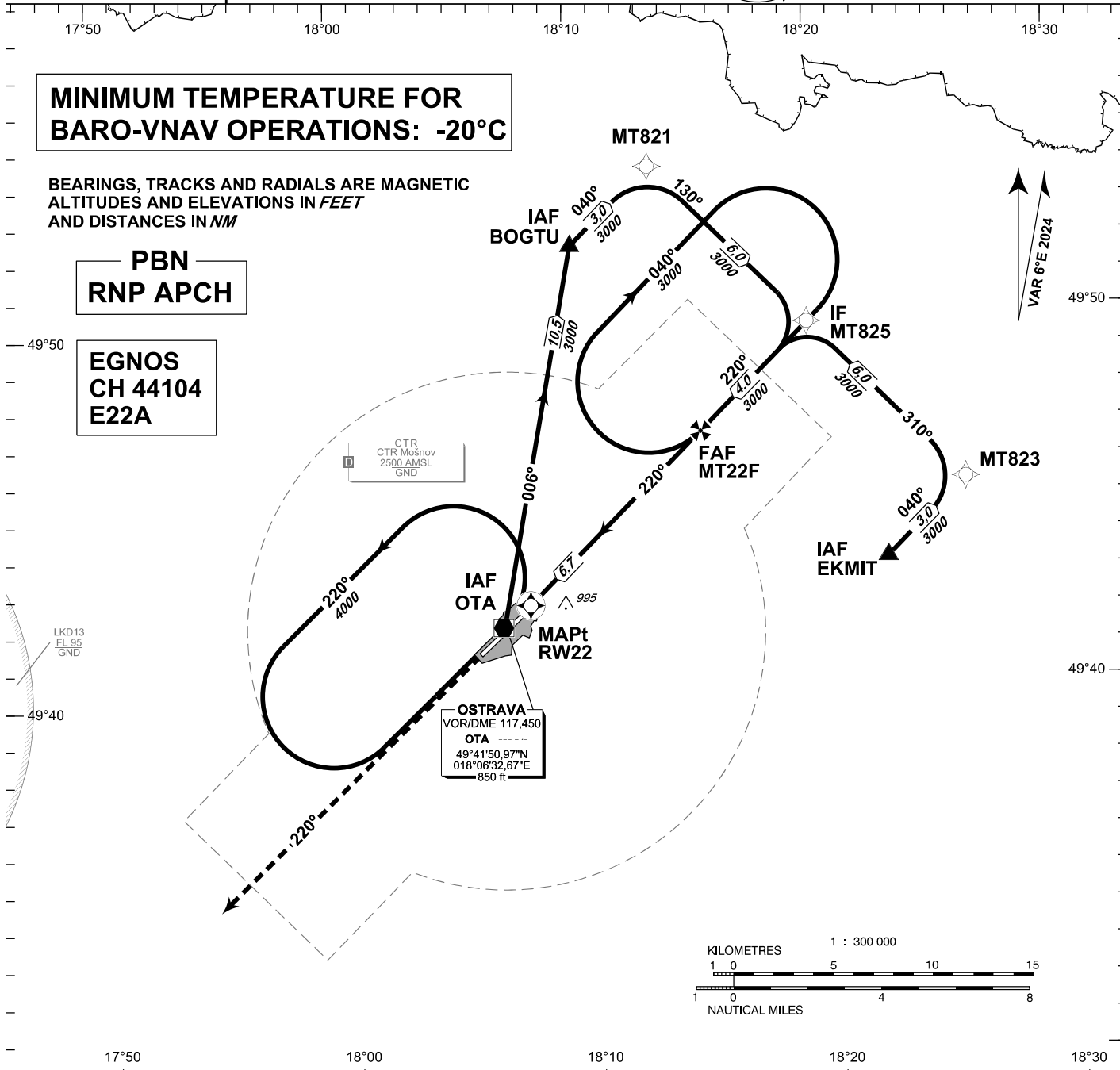
OSTRAVA/Mošnov
RNP
RWY 22

MINIMUM TEMPERATURE FOR BARO-VNAV OPERATIONS: -20°C

BEARINGS, TRACKS AND RADIALS ARE MAGNETIC
ALTITUDES AND ELEVATIONS IN FEET
AND DISTANCES IN NM

PBN
RNP APCH

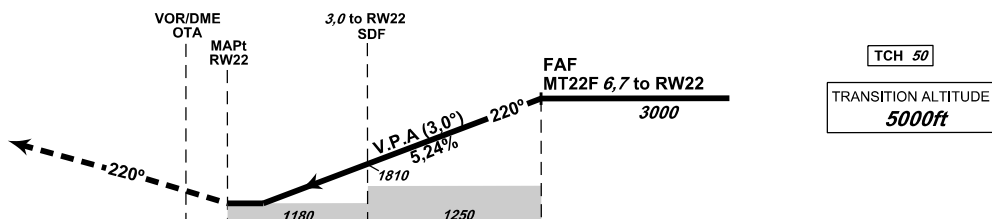
EGNOS
CH 44104
E22A



MISSED APPROACH:

Climb on track 220° to 4000 ft AMSL
expect vectoring
In case of RFC climb on track 220°
to 8,0 NM DME OTA and
turn right to VOR/DME OTA
in climbing to 4000 ft AMSL

THR 494225.64N, 0180742.39E
ELEV 808



THR 494225.64N, 0180742.39E ELEV 808 NM FM THR22

OCA/OCH	A	B	C	D	
LNAV	ft	1180/370			
LNAV/VNAV	ft	1093/285			
LPV	ft	1008/200			
Circling	ft	1400/560	1440/600	1690/850	2100/1260

DIST TO THR (RWY22) NM	6	5	4	3	2	1
ALTITUDES ft	2770	2450	2130	1810	1500	1180

FAF - MAPt (RWY22) 6,7 NM	kt	80	100	120	140	160	180
min:sec		5:02	4:01	3:21	2:52	2:31	2:14
Rate of descent ft/min		420	530	640	740	850	960

change: VAR, chart revision

Timing is not authorized for defining the MAPt.

APPROACH RNP RWY 22

Recommended coding:

Path Terminator	Waypoint				Cours / Track MAG° (True°)	DIST NM	Turn Direction	Constraints		Nav Spec.	Remarks
	ID	Type	Flyover	Coordinates				Level	Speed		
via BOGTU											
IF	BOGTU	IAF	NO	495204.59N 0180955.48E	---	---	---	A3000+	---	RNP APCH	---
TF	MT821	---	NO	495408.55N 0181316.88E	040 (046.37)	3.0	---	---	---	RNP APCH	---
TF	MT825	IF	NO	494948.05N 0181939.97E	130 (136.41)	6.0	RIGHT	---	---	RNP APCH	---
TF	MT22F	FAF	NO	494703.81N 0181512.91E	220 (226.49)	4.0	RIGHT	A3000	---	RNP APCH	---
TF	RWY22	MAPT	YES	494225.64N 0180742.39E	220 (226.43)	6.7	---	---	---	RNP APCH	---
VA	---	---	---	---	220 (226.34)	19.8	---	A4000+	---	RNP APCH	---
via EKMIT											
IF	EKMIT	IAF	NO	494323.64N 0182240.63E	---	---	---	A3000+	---	RNP APCH	---
TF	MT823	---	NO	494527.22N 0182601.91E	040 (046.53)	3.0	---	---	---	RNP APCH	---
TF	MT825	IF	NO	494948.05N 0181939.97E	310 (316.57)	6.0	LEFT	---	---	RNP APCH	---
TF	MT22F	FAF	NO	494703.81N 0181512.91E	220 (226.49)	4.0	LEFT	A3000	---	RNP APCH	---
TF	RWY22	MAPT	YES	494225.64N 0180742.39E	220 (226.43)	6.7	---	---	---	RNP APCH	---
VA	---	---	---	---	220 (226.34)	19.8	---	A4000+	---	RNP APCH	---
via OTA											
IF	OTA	IAF	NO	494150.97N 0180632.67E	---	---	---	A3000+	---	RNP APCH	---
TF	BOGTU	---	NO	495204.59N 0180955.48E	006 (012.06)	10.5	---	---	---	RNP APCH	---
TF	MT821	---	NO	495408.55N 0181316.88E	040 (046.37)	3.0	RIGHT	---	---	RNP APCH	---
TF	MT825	IF	NO	494948.05N 0181939.97E	130 (136.41)	6.0	RIGHT	---	---	RNP APCH	---
TF	MT22F	FAF	NO	494703.81N 0181512.91E	220 (226.49)	4.0	RIGHT	A3000	---	RNP APCH	---
TF	RWY22	MAPT	YES	494225.64N 0180742.39E	220 (226.43)	6.7	---	---	---	RNP APCH	---
VA	---	---	---	---	220 (226.34)	19.8	---	A4000+	---	RNP APCH	---

RNAV HOLDING

Holding point	Inbound MAG° (True°)	Outbound MAG° (True°)	Turn Direction	MAX IAS kt	Min. holding altitude FT MSL / FL	Time	Distance NM	Remarks
OTA	040 (046.30)	220 (226.30)	LEFT	---	A4000	1 MIN	---	---
MT22F	220 (226.33)	040 (046.33)	RIGHT	---	A3000	1 MIN	---	---

SBAS FAS Data Block

Input Data

Operation Type	0
SBAS Provider	1 (EGNOS)
Airport Identifier	LKMT
Runway	22
Runway Letter	0 (None)
Approach Performance Designator	0
Route Indicator	
Reference Path Data Selector	0
Reference Path Identifier	E22A
LTP/FTP Latitude	494225.6400N
LTP/FTP Longitude	0180742.3900E
LTP/FTP Ellipsoidal Height (metres)	289.2
FPAP Latitude	494107.1600N
Delta FPAP Latitude (seconds)	-78.4800
FPAP Longitude	0180535.6700E
Delta FPAP Longitude (seconds)	-126.7200
Threshold Crossing Height	50.0
TCH Units Selector	0 (feet)
Glidepath Angle (degrees)	3.00
Course Width (metres)	105.00
Length Offset (metres)	0
HAL (metres)	40.0
VAL (metres)	35.0

Output Data

Data Block	10 14 0D 0B 0C 16 00 00 01 32 32 05 D0 FC 54 15 6C A6 C7 07 4C 1F E0 9A FD 00 22 FC F4 01 2C 01 64 00 C8 AF 54 E5 86 7F
Calculated CRC Value	54E5867F

Required Additional Data

ICAO Code	LK
LTP/FTP Orthometric Height (metres)	246.2