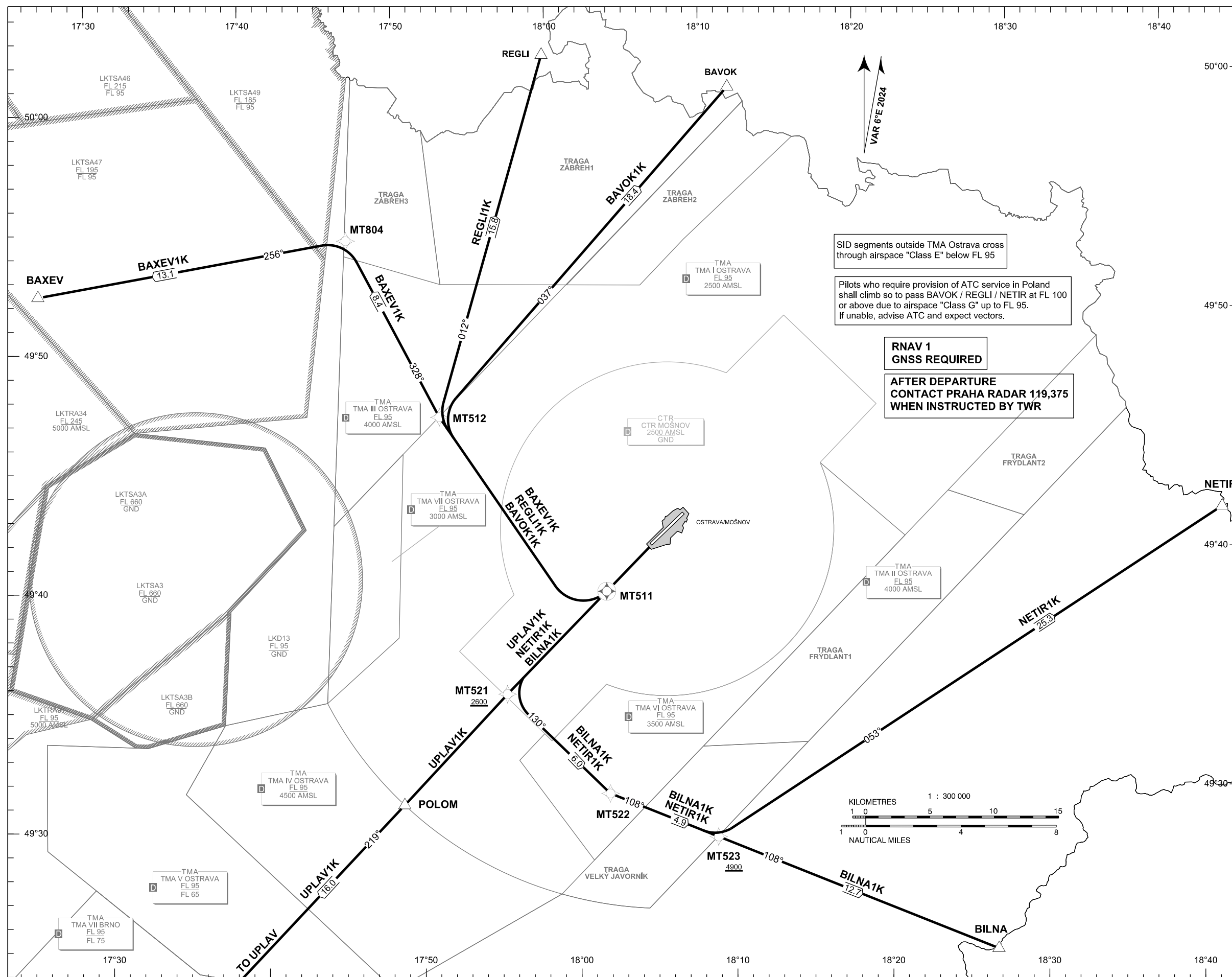


STANDARD DEPARTURE CHART-  
INSTRUMENT (SID) - ICAO

OSTRAVA/MOŠNOV  
RNAV SID RWY 22



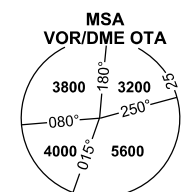
SID segments outside TMA Ostrava cross through airspace "Class E" below FL 95

Pilots who require provision of ATC service in Poland shall climb so to pass BAVOK / REGLI / NETIR at FL 100 or above due to airspace "Class G" up to FL 95. If unable, advise ATC and expect vectors.

**RNAV 1  
GNSS REQUIRED**

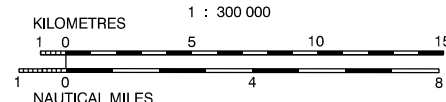
**AFTER DEPARTURE  
CONTACT PRAHA RADAR 119,375  
WHEN INSTRUCTED BY TWR**

PRAHA RADAR	119.375
MOŠNOV DELIVERY	128.525
MOŠNOV TOWER	120.805
MOŠNOV ATIS	118.055
EMERGENCY FREQ	121.500



BEARINGS, TRACKS AND RADIALS ARE MAGNETIC  
ALTITUDES AND ELEVATIONS ARE IN FEET  
DISTANCES ARE IN NM

TRANSITION ALTITUDE  
5000 FT



CHANGE : VAR, chart revision

The design of SIDs assumes climb gradient 3,3 %, MAX IAS 250 kt below FL100. If a greater climb gradient or a speed reduction are required, it is indicated in the description of the route. Recommended coding:

Designator		Route				After Departure					Remarks
						Initial climb to		Expect FREQ			
Path Terminator	Waypoint			Cours / Track MAG° (True°)	DIST NM	Turn Direction	Constraints		Nav Spec.	Remarks	
	ID	Flyover	Coordinates				Level	Speed			
<b>BAVOK1K</b> (BAVOK ONE KILO DEPARTURE)		Climb direct to MT511 - MT512 - BAVOK				According to ATC clearance		PRAHA RADAR 119,375 MHz (when instructed by TWR)		---	
DF	MT511	YES	493915.38N 0180235.54E	---	---	---	---	---	RNAV 1	---	
DF	MT512	NO	494648.73N 0175212.99E	---	---	RIGHT	---	---	RNAV 1	---	
TF	BAVOK	NO	500010.0000N 0181143.0000E	037 (043.21)	18.4	RIGHT	---	---	RNAV 1	---	
<b>BAXEV1K</b> (BAXEV ONE KILO DEPARTURE)		Climb direct to MT511 - MT512 - MT804 - BAXEV				According to ATC clearance		PRAHA RADAR 119,375 MHz (when instructed by TWR)		---	
DF	MT511	YES	493915.38N 0180235.54E	---	---	---	---	---	RNAV 1	---	
DF	MT512	NO	494648.73N 0175212.99E	---	---	RIGHT	---	---	RNAV 1	---	
TF	MT804	NO	495419.91N 0174633.70E	328 (334.10)	8.4	---	---	---	RNAV 1	---	
TF	BAXEV	NO	495223.68N 0172629.37E	256 (261.63)	13.1	LEFT	---	---	RNAV 1	---	
<b>BILNA1K</b> (BILNA ONE KILO DEPARTURE)		Climb direct to MT521 - MT522 - MT523 - BILNA				According to ATC clearance		PRAHA RADAR 119,375 MHz (when instructed by TWR)		Average climb gradient from DER to reach MT523 at 4900 ft MSL is 3.8%.	
DF	MT521	NO	493506.70N 0175556.03E	---	---	---	A2600+	---	RNAV 1	---	
TF	MT522	NO	493047.16N 0180218.29E	130 (136.18)	6.0	LEFT	---	---	RNAV 1	---	
TF	MT523	NO	492847.77N 0180909.11E	108 (114.00)	4.9	LEFT	A4900+	---	RNAV 1	---	
TF	BILNA	NO	492336.79N 0182650.28E	108 (114.09)	12.7	---	---	---	RNAV 1	---	
<b>NETIR1K</b> (NETIR ONE KILO DEPARTURE)		Climb direct to MT521 - MT522 - MT523 - NETIR				According to ATC clearance		PRAHA RADAR 119,375 MHz (when instructed by TWR)		Average climb gradient from DER to reach MT523 at 4900 ft MSL is 3.8%.	
DF	MT521	NO	493506.70N 0175556.03E	---	---	---	A2600+	---	RNAV 1	---	
TF	MT522	NO	493047.16N 0180218.29E	130 (136.18)	6.0	LEFT	---	---	RNAV 1	---	
TF	MT523	NO	492847.77N 0180909.11E	108 (114.00)	4.9	LEFT	A4900+	---	RNAV 1	---	
TF	NETIR	NO	494140.79N 0184232.39E	053 (059.10)	25.3	LEFT	---	---	RNAV 1	---	
<b>REGLI1K</b> (REGLI ONE KILO DEPARTURE)		Climb direct to MT511 - MT512 - REGLI				According to ATC clearance		PRAHA RADAR 119,375 MHz (when instructed by TWR)		---	
DF	MT511	YES	493915.38N 0180235.54E	---	---	---	---	---	RNAV 1	---	
DF	MT512	NO	494648.73N 0175212.99E	---	---	RIGHT	---	---	RNAV 1	---	
TF	REGLI	NO	500149.0000N 0175944.0000E	012 (017.88)	15.8	RIGHT	---	---	RNAV 1	---	
<b>UPLAV1K</b> (UPLAV ONE KILO DEPARTURE)		Climb direct to POLOM - UPLAV				According to ATC clearance		PRAHA RADAR 119,375 MHz (when instructed by TWR)		---	
DF	POLOM	NO	493037.51N 0174902.68E	---	---	---	---	---	RNAV 1	---	
TF	UPLAV	NO	491922.27N 0173142.23E	219 (225.26)	16.0	---	---	---	RNAV 1	---	