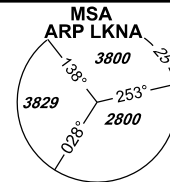


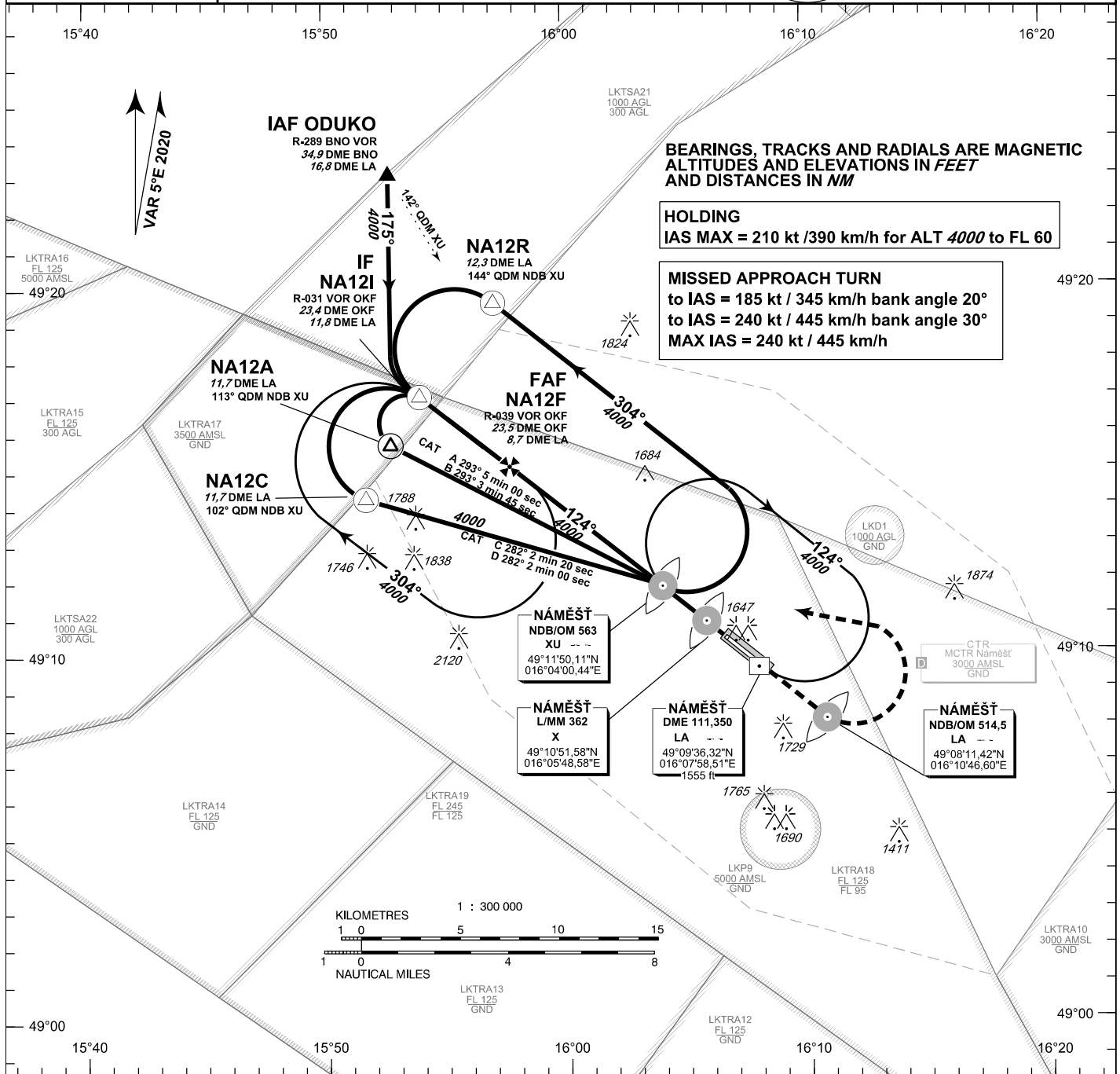
INSTRUMENT APPROACH CHART - ICAO

AERODROME ELEV 1547
THR RWY 27 ELEV 1547
THR RWY 30 ELEV 1496
OCH RELATED TO THR RWY 12

NÁMĚŠŤ RADAR 118,155
 reserve 266,200
PRECISION 283,900
 reserve 123,300
TOWER 126,505
 reserve 121,180



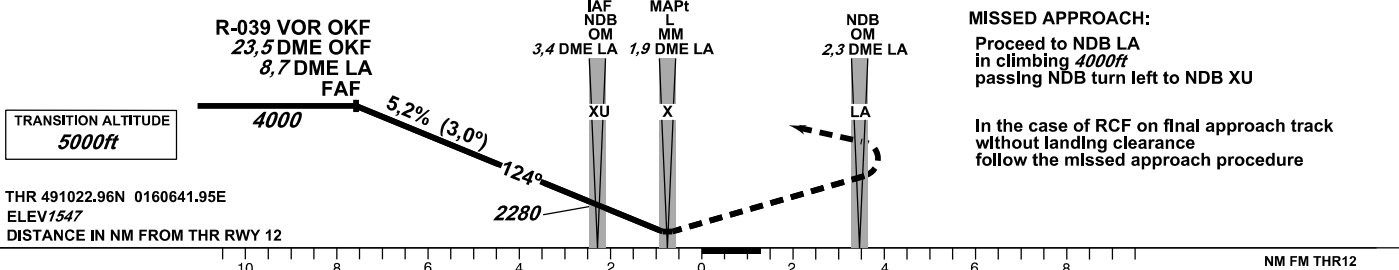
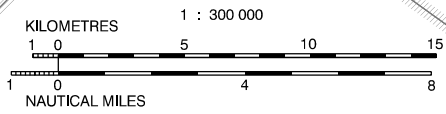
NÁMĚŠŤ NDB RWY 12



BEARINGS, TRACKS AND RADIALS ARE MAGNETIC
ALTITUDES AND ELEVATIONS IN FEET
AND DISTANCES IN NM

HOLDING
IAS MAX = 210 kt / 390 km/h for ALT 4000 to FL 60

MISSED APPROACH TURN
 to IAS = 185 kt / 345 km/h bank angle 20°
 to IAS = 240 kt / 445 km/h bank angle 30°
MAX IAS = 240 kt / 445 km/h



THR 491022.96N 0160641.95E
 ELEV 1547
 DISTANCE IN NM FROM THR RWY 12

| OCA/OCH | A | B | C | D | |
|---------------------------|----|------------|------|------|------|
| Straight-in Approach NDB | ft | 1857 / 308 | | | |
| PAR | ft | 1857 / 308 | | | |
| Circling NORTH OF AD ONLY | ft | 1936 | 1988 | 2086 | 2185 |

| time FAF - MAPt 6,9 NM | kt | 81 | 100 | 122 | 141 | 162 | 184 |
|------------------------|----------|------|------|------|------|------|------|
| min:sec | | 5:05 | 4:07 | 3:23 | 2:56 | 2:32 | 2:14 |
| Rate of descent | m / s | 2,2 | 2,7 | 3,3 | 3,8 | 4,4 | 5,0 |
| | ft / min | 433 | 532 | 650 | 748 | 866 | 984 |

change: chart revision

| Seznam traťových bodů / Way point list | | |
|--|------------|-------------|
| XU (NDB) | 49 11 50 N | 016 04 00 E |
| X (L) | 49 10 52 N | 016 05 49 E |
| NA12A | 49 15 44 N | 015 52 45 E |
| NA12C | 49 14 16 N | 015 51 42 E |
| NA12R | 49 19 36 N | 015 57 04 E |
| NA12I | 49 17 03 N | 015 53 58 E |
| NA12F | 49 15 08 N | 015 57 42 E |
| LA (NDB) | 49 08 12 N | 016 10 47 E |

