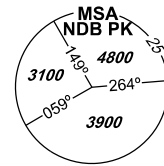


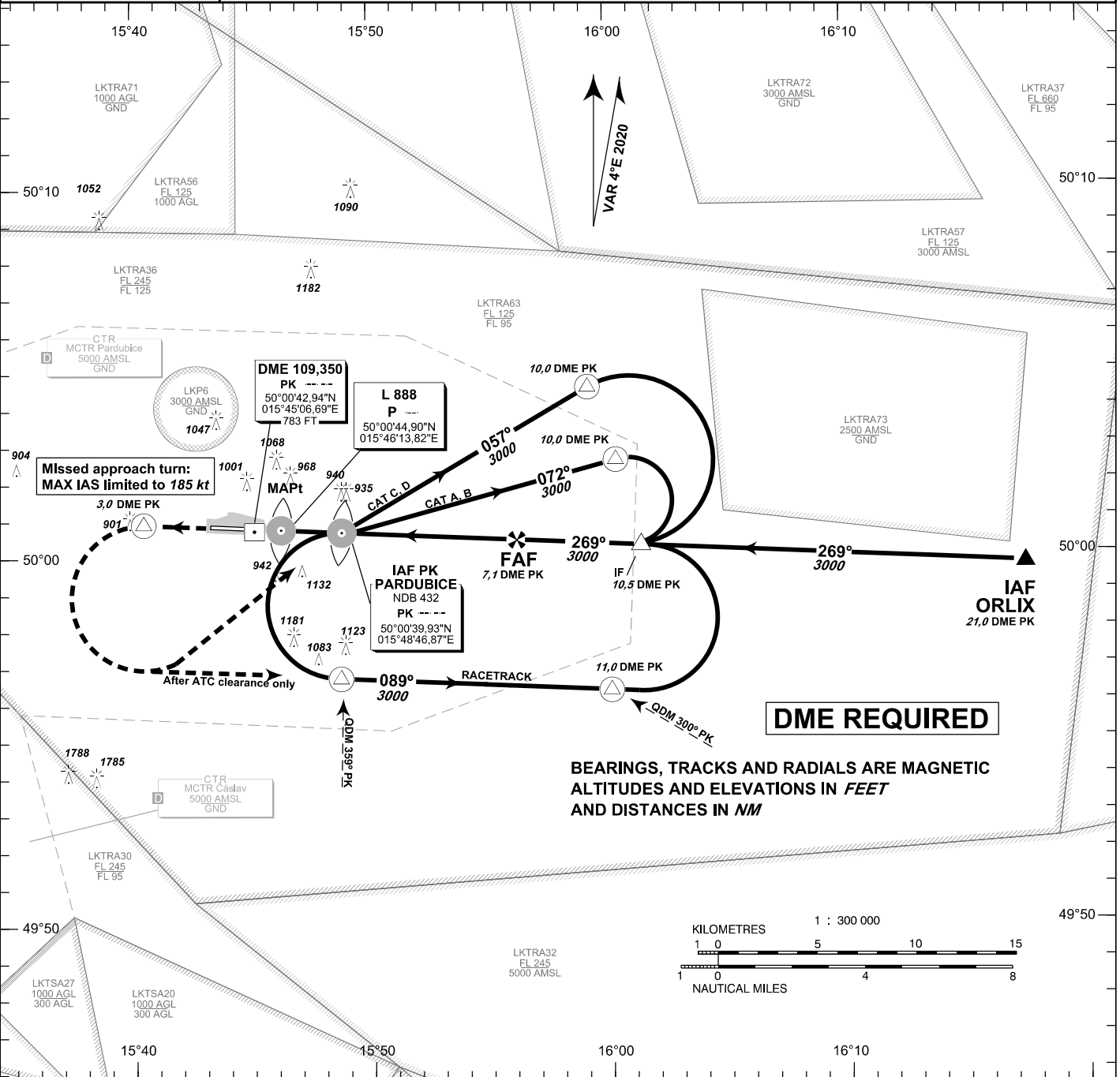
INSTRUMENT APPROACH CHART - ICAO

AERODROME ELEV 741
THR RWY 27 ELEV 731
OCH RELATED TO THR RWY 27

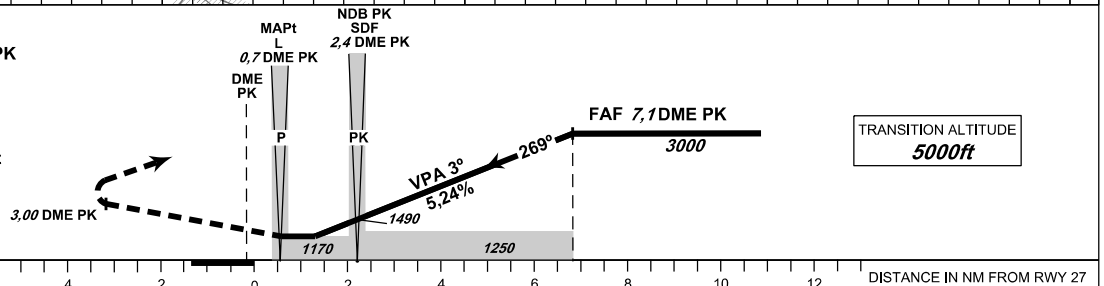
PARDUBICE	
RADAR	128,365 267,300 O/R
PRECISION	296,825 O/R 123,300 reserve
TOWER	120,155 120,205 reserve



PARDUBICE NDB
RWY 27



MISSED APPROACH:
 Climb straight ahead to 3,0 DME PK
 turn left to NDB PK
 in climbing to 3000ft AMSL
 or according to ATC clearance
MA turn: MAX IAS limited to 185 kt
 THR 500046.50N, 0154521.56E
 ELEV 731



OCA/OCH	A	B	C	D
Straight-in Approach	1170/440			
Circling South of AD Only!	1240/510	1430/700	1580/850	1730/1010

DME PK	7	6	5	4	3	2	1
ALTITUDES	2960	2640	2330	2010	1690	1370	1050
FAF-MAPT 6,4 NM	kt	80	100	120	140	160	180
	min:sec	4:46	3:46	3:12	2:45	2:24	2:08
Rate of descent	f/min	430	540	650	750	860	970

Timing is not authorized for defining the MAPt.