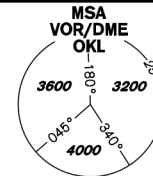


INSTRUMENT APPROACH CHART - ICAO

AERODROME ELEV 1234
THR RWY 24 ELEV 1158
OCH RELATED TO THR RWY 24

PRAHA RADAR 127,580
RUZYŇNĚ RADAR 119,010
SUPPLEMENTARY FREQ 136,080
121,500
134,560
RUZYŇNĚ TOWER 118,110
SUPPLEMENTARY FREQ 121,500



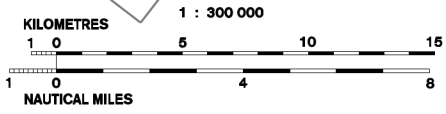
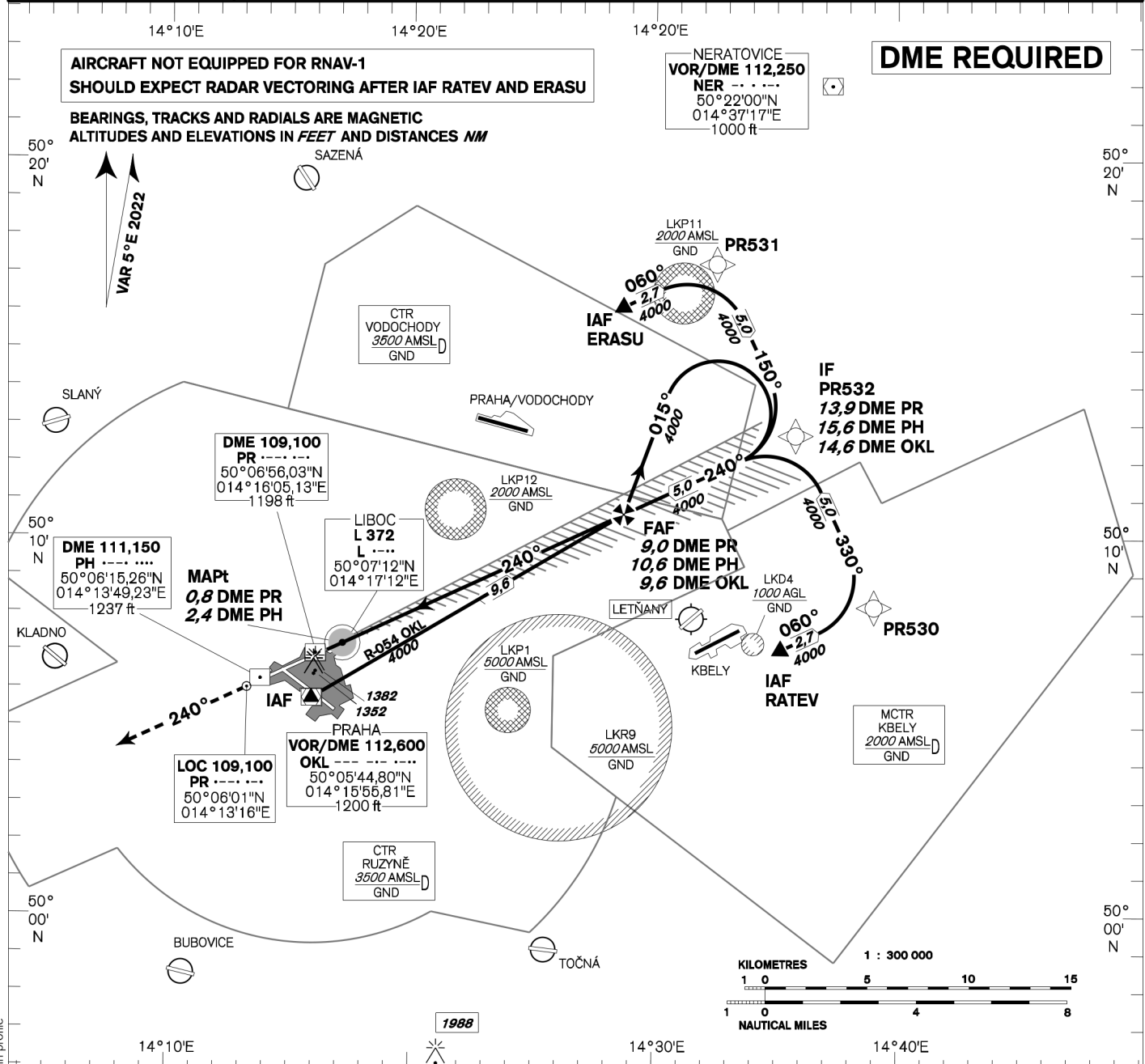
PRAHA/Ruzyně ILS
RWY 24

AIRCRAFT NOT EQUIPPED FOR RNAV-1 SHOULD EXPECT RADAR VECTURING AFTER IAF RATEV AND ERASU

BEARINGS, TRACKS AND RADIALS ARE MAGNETIC
ALTITUDES AND ELEVATIONS IN FEET AND DISTANCES NM

DME REQUIRED

NERATOVICE VOR/DME 112,250
NER
50°22'00"N
014°37'17"E
1000 ft



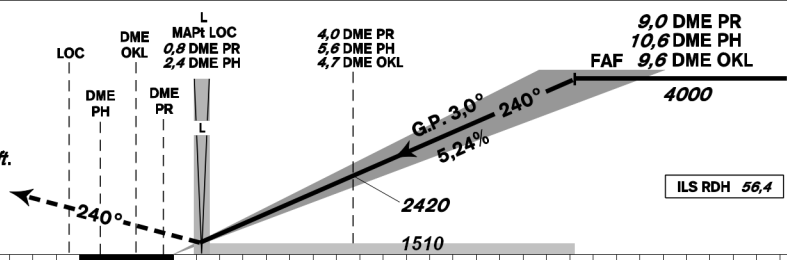
change: OCA/OCH in profile

MISSED APPROACH:

Climb on track 240° to 4000ft, radar vectoring will be provided.

In case of RCF climb on track 240° to 4000ft, at 10NM DME OKL turn right to OKL and climb to 5000ft.

THR 500657.42N, 0141624.12E
ELEV 1158



TRANSITION ALTITUDE 5000ft

OCA/OCH		A	B	C	D
Straight-in Approach	Cat I	ft 1304 / 146	1314 / 156	1324 / 166	1335 / 177
	Cat II	ft 1217 / 59	1226 / 68	1235 / 77	1249 / 91
	LOC	ft 1510 / 350			
Circling		see the circling approach chart			

DME PR	NM	9	8	7	6	5	4	3	2	1
DME PH	NM	10,6	9,6	8,6	7,6	6,6	5,6	4,6	3,6	2,6
DME OKL	NM	9,6	8,6	7,7	6,7	5,7	4,7	3,7	2,8	1,9
DIST THR	NM	8,8	7,8	6,8	5,8	4,8	3,8	2,8	1,8	0,8
ALTITUDES	ft	4010	3690	3380	3060	2740	2420	2100	1780	1470

FAF - MAPt	8,2 NM	kt	80	100	120	140	160	180
min:sec			6:09	4:55	4:06	3:31	3:04	2:44
Rate of descent (5,24%)		ft/min	420	530	640	740	850	960

Timing is not authorized for defining the MAPt.

CAT III approved.

