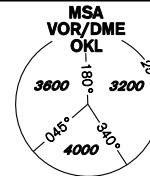


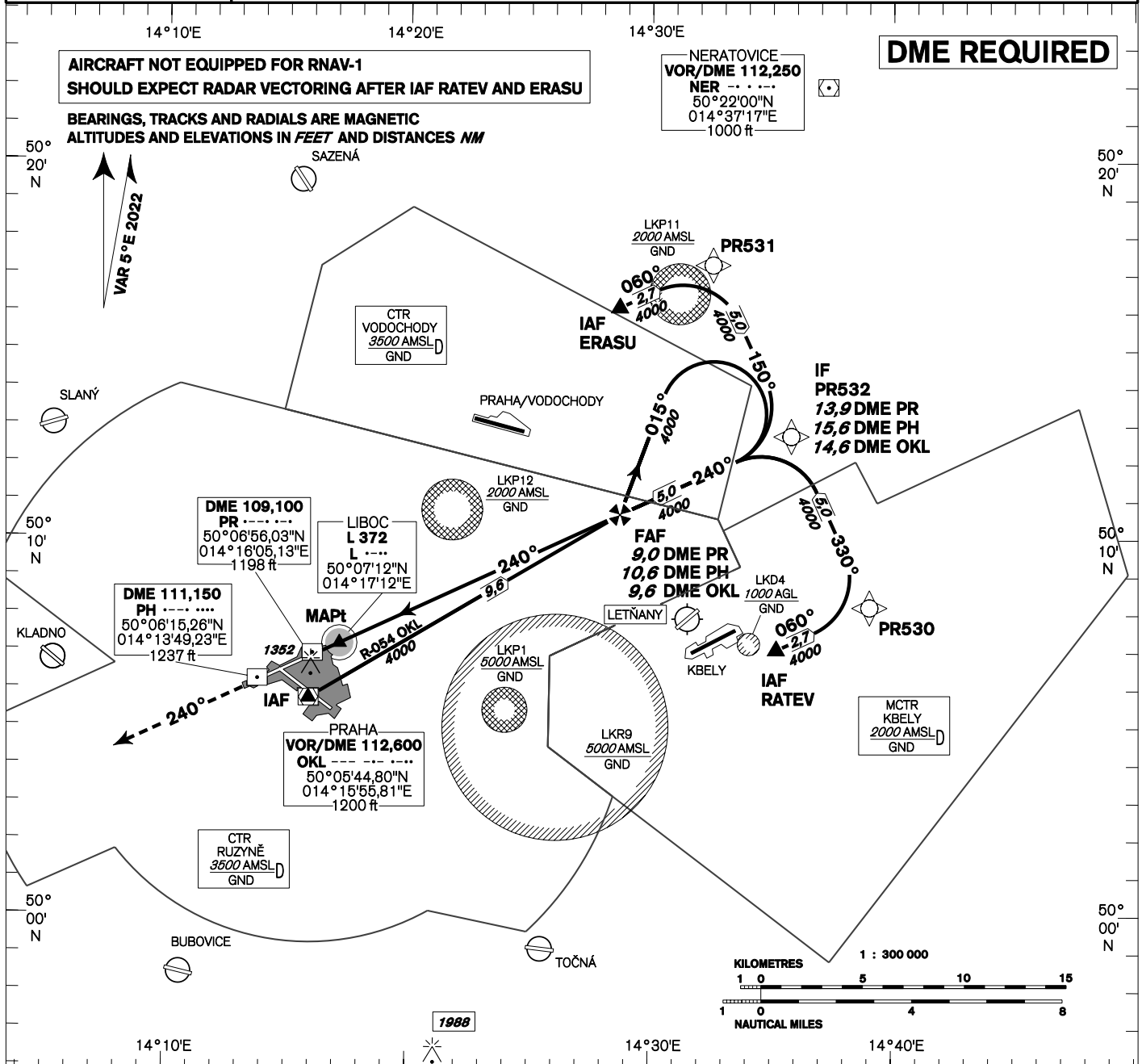
INSTRUMENT APPROACH CHART - ICAO

AERODROME ELEV **1234**
THR RWY 24 ELEV **1158**
OCH RELATED TO THR RWY 24

PRAHA RADAR 127,580
RUZYNĚ RADAR 119,010
SUPPLEMENTARY FREQ. 136,080
121,500
134,560
RUZYNĚ TOWER SUPPLEMENTARY FREQ. 118,110
121,500



**PRAHA/Ruzyně
NDB
RWY 24**

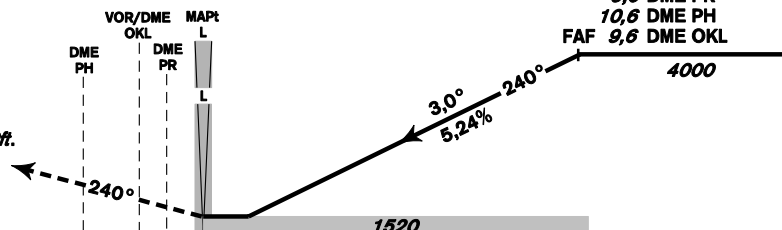


MISSED APPROACH:

Climb on track 240° to 4000ft, radar vectoring will be provided.

In case of RCF climb on track 240° to 4000ft, at 10NM DME OKL turn right to OKL and climb to 5000ft.

THR 500657.42N, 0141624.12E
ELEV 1158



change: VAR, MSA, MAG Tracks

OCA/OCH	A	B	C	D	
Straight-in Approach	ft	1520/360			
Circling		see the circling approach chart			

DME PR	NM	9	8	7	6	5	4	3	2	1
DME PH	NM	10,6	9,6	8,6	7,6	6,6	5,6	4,6	3,6	2,6
DME OKL	NM	9,6	8,6	7,7	6,7	5,7	4,7	3,7	2,8	1,9
DIST THR	NM	8,8	7,8	6,8	5,8	4,8	3,8	2,8	1,8	0,8
ALTITUDES	ft	4010	3690	3370	3060	2740	2420	2100	1780	1460

FAF - MAPt	8,2 NM	kt	80	100	120	140	160	180
Rate of descent (5,24%)		min:sec	6:09	4:55	4:06	3:31	3:04	2:44
		ft/min	420	530	640	740	850	960

Timing is not authorized for defining the MAPt.