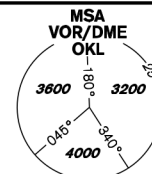


INSTRUMENT APPROACH CHART - ICAO

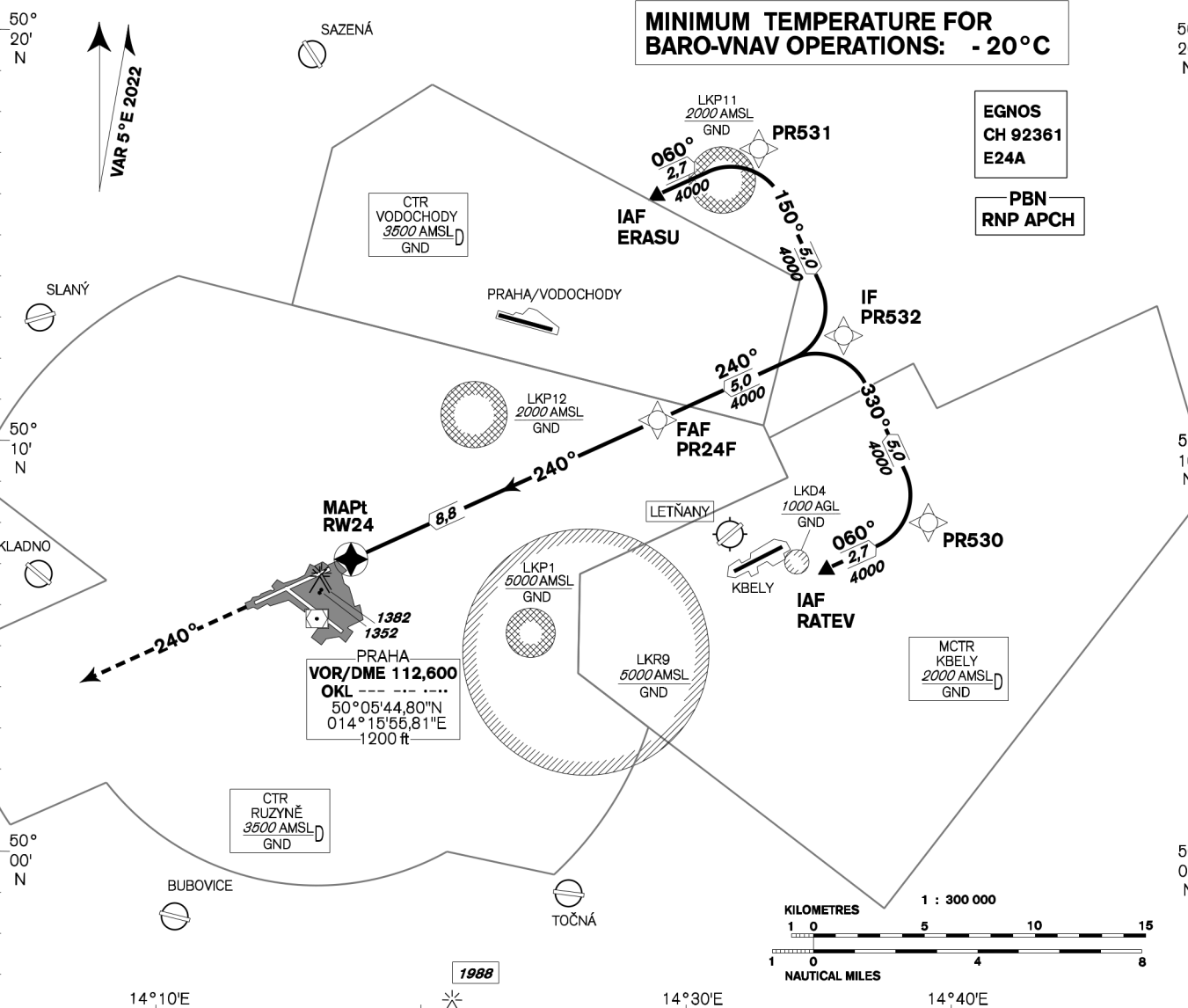
AERODROME ELEV **1234**
THR RWY 24 ELEV **1158**
OCH RELATED TO THR RWY 24

PRAHA RADAR 127,580
RUZYŇ RADAR 119,010
SUPPLEMENTARY FREQ. 136,080
121,500
134,560
RUZYŇ TOWER 118,110
SUPPLEMENTARY FREQ. 121,500



PRAHA/Ruzyně
RNP
RWY 24

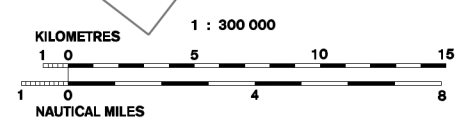
BEARINGS, TRACKS AND RADIALS ARE MAGNETIC
ALTITUDES AND ELEVATIONS IN FEET AND DISTANCES NM



MINIMUM TEMPERATURE FOR BARO-VNAV OPERATIONS: -20°C

EGNOS
CH 92361
E24A

PBN
RNP APCH

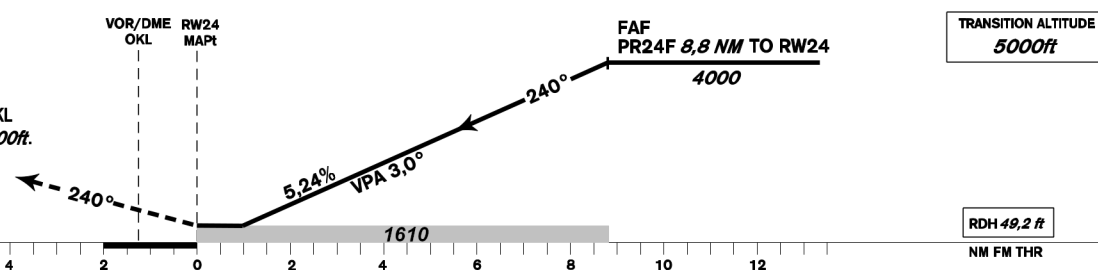


change: OCA/OCH in profile

MISSED APPROACH:

Climb on track 240° to 4000ft, radar vectoring will be provided.
In case of RCF climb on track 240° to 4000ft, at 10NM DME OKL turn right to OKL and climb to 5000ft.

THR 500657.42N, 0141624.12E
ELEV 1158



OCA/OCH	A	B	C	D
LNAV	ft	1610 / 460		
LNAV / VNAV	ft	1507 / 349		
LPV	ft	1358 / 200		
Circling		see the circling approach chart		

DIST THR (MAPt) NM	9	8	7	6	5	4	3	2	1
ALTITUDES ft	4070	3750	3440	3120	2800	2480	2160	1840	1530

FAF - MAPt 8.8 NM	kt	80	100	120	140	160	180
min:sec		6:34	5:15	4:23	3:45	3:17	2:55
Rate of descent (5,24%)	ft/min	420	530	640	740	850	960

Timing is not authorized for defining the MAPt.

Posloupnost traťových bodů / Way point sequence

Od / From IAF ERASU		
ERASU	IAF	fly-by
PR531		fly-by
PR532	IF	fly-by
PR24F	FAF	fly-by
RW24	MAPt	fly-over

Od / From IAF RATEV		
RATEV	IAF	fly-by
PR530		fly-by
PR532	IF	fly-by
PR24F	FAF	fly-by
RW24	MAPt	fly-over

Seznam traťových bodů / Way point list	
ERASU	50 16 07,51 N 014 28 41,31 E
RATEV	50 07 03,32N 014 35 12,65 E
PR530	50 08 11,56 N 014 39 03,31 E
PR531	50 17 15,97 N 014 32 32,54 E
PR532	50 12 43,82 N 014 35 48,23 E
PR24F	50 10 38,79 N 014 28 46,27 E
RW24	50 06 57,42 N 014 16 24,12 E

SBAS FAS Data Block

Vstupní data / Input Data

Parametry / Parameters	Hodnoty / Values
Operation Type	0
SBAS Provider	1 (EGNOS)
Airport Identifier	LKPR
Runway	24
Runway Letter	0 (None)
Approach Performance Designator	0
Route Indicator	
Reference Path Data Selector	0
Reference Path Identifier	E24A
LTP/FTP Latitude	500657.4200N
LTP/FTP Longitude	0141624.1200E
LTP/FTP Ellipsoidal Height (metres)	398.5
FPAP Latitude	500606.6100N
Delta FPAP Latitude (seconds)	-50.8100
FPAP Longitude	0141334.6800E
Delta FPAP Longitude (seconds)	-169.4400
Threshold Crossing Height	49.2
TCH Units Selector	0 (feet)
Glidepath Angle (degrees)	3.00
Course Width (metres)	105.00
Length Offset (metres)	0
HAL (metres)	40.0
VAL (metres)	35.0

Výstupní data / Output Data

Parametry / Parameters	Hodnoty / Values
Data Block	10 12 10 0B 0C 18 00 00 01 34 32 05 18 E7 81 15 70 1E 20 06 91 23 0C 73 FE 40 D4 FA EC 01 2C 01 64 00 C8 AF 1E 3C 7D 74
Calculated CRC Value	1E3C7D74

Required Additional Data (not CRC wrapped)

Parametry / Parameters	Hodnoty / Values
ICAO Code	LK
LTP/FTP Orthometric Height (metres)	352.8