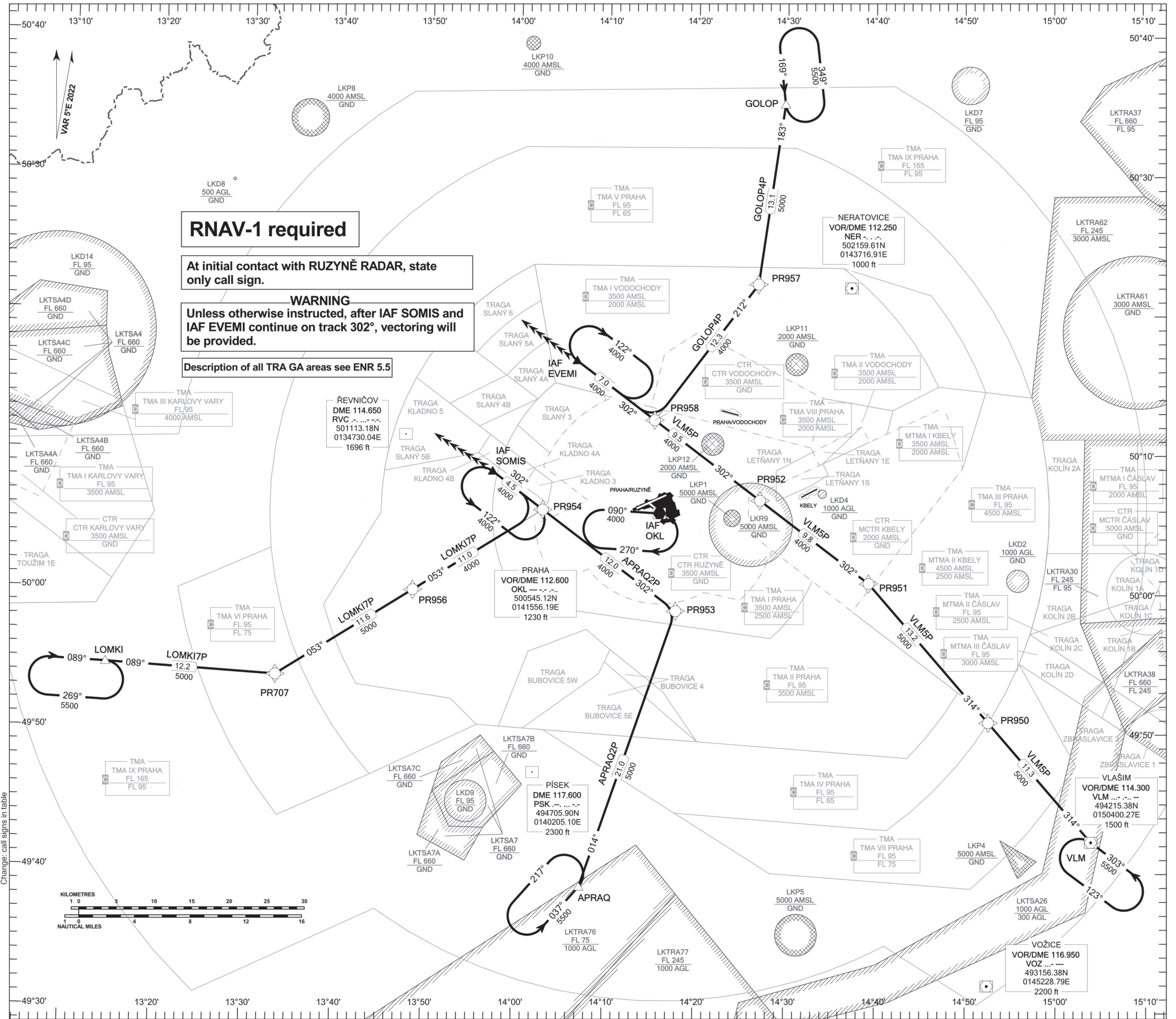


STANDARD ARRIVAL CHART - INSTRUMENT (STAR) - ICAO

PRAHA/RUZYŇĚ RNAV STAR RWY 12



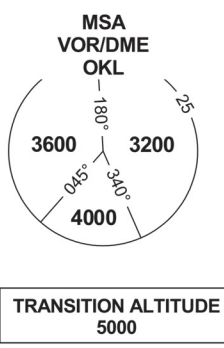
**RNAV-1 required**

At initial contact with RUZYŇĚ RADAR, state only call sign.

**WARNING**  
Unless otherwise instructed, after IAF SOMIS and IAF EVEMI continue on track 302°, vectoring will be provided.

Description of all TRA GA areas see ENR 5.5

PRAHA RADAR	120.530
	127.580
RUZYŇĚ RADAR	119.010
RUZYŇĚ RADAR	118.310
SUPPLEMENTARY FREQ APP	136.080
RUZYŇĚ DELIVERY	120.060
RUZYŇĚ TOWER	134.560
SUPPLEMENTARY FREQ TWR	118.110
RUZYŇĚ GROUND	121.910
RUZYŇĚ ATIS	122.160
EMERGENCY FREQ	121.500



BEARINGS, TRACKS AND RADIALS ARE MAGNETIC  
ALTITUDES AND ELEVATIONS ARE IN FEET  
DISTANCES ARE IN NM

Speed restriction see AIP AD 2-LKPR-30, 2.22.4.2.1

