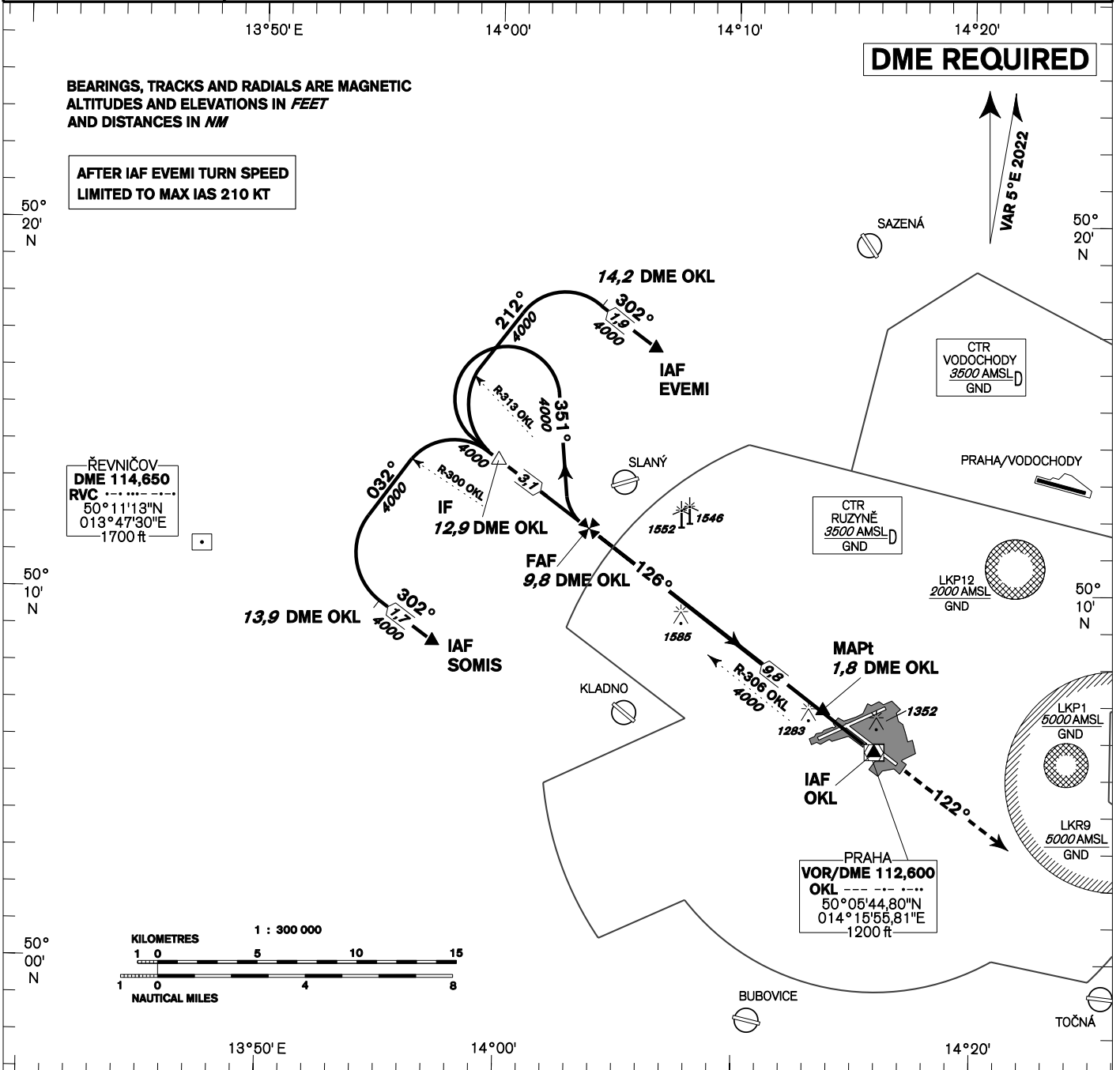


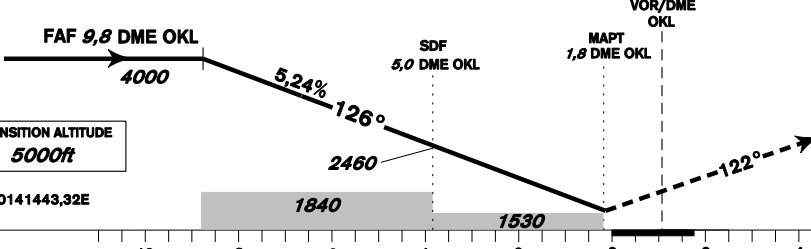
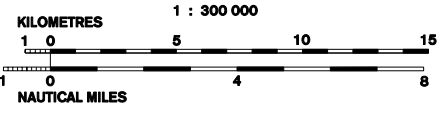
<b>INSTRUMENT APPROACH CHART - ICAO</b>	<p>AERODROME ELEV <b>1234</b> THR RWY 12 ELEV <b>1160</b> OCH RELATED TO THR RWY 12</p>	<p>PRAHA RADAR 127,580 RUZYŇNĚ RADAR 119,010 SUPPLEMENTARY FREQ 136,080 121,500 RUZYŇNĚ TOWER 134,560 SUPPLEMENTARY FREQ 118,110 121,500</p>	<p style="text-align: center;">MSA VOR/DME OKL</p> <p style="text-align: right; font-size: 24pt; font-weight: bold;">PRAHA/Ruzyně VOR RWY 12</p>
-----------------------------------------	-------------------------------------------------------------------------------------------------	----------------------------------------------------------------------------------------------------------------------------------------------------------------------	------------------------------------------------------------------------------------------------------------------------------------------------------------------



AFTER IAF EVEMI TURN SPEED LIMITED TO MAX IAS 210 KT

ŘEVNIČOV  
DME 114,650  
RVC  
50°11'13"N  
013°47'30"E  
1700 ft

DME REQUIRED



**MISSED APPROACH:**  
Climb on track 122° to 4000ft, radar vectoring will be provided.  
In case of RCF climb on track 122° to 4000ft, at 10NM DME OKL turn right to OKL and climb to 5000ft.

THR 500628,84N 0141443,32E  
ELEV 1160

OCA/OCH	A	B	C	D
Straight-in Approach	ft 1530 / 370			
Circling	see the circling approach chart			

DME OKL NM	10	9	8	7	6	5	4	3
THR DIST NM	8,9	7,9	6,9	5,9	4,9	3,9	2,9	1,9
ALTITUDES ft	4050	3730	3420	3100	2780	2460	2140	1820

FAF - MAPt 8,0 NM	kt	80	100	120	140	160	180
Rate of descent	min:sec	6:00	4:48	4:00	3:26	3:00	2:40
	ft/min	420	530	640	740	850	950

Timing is not authorized for defining the MAPt.