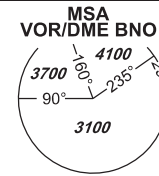


INSTRUMENT APPROACH CHART - ICAO

AERODROME ELEV 778
THR RWY 27 ELEV 771

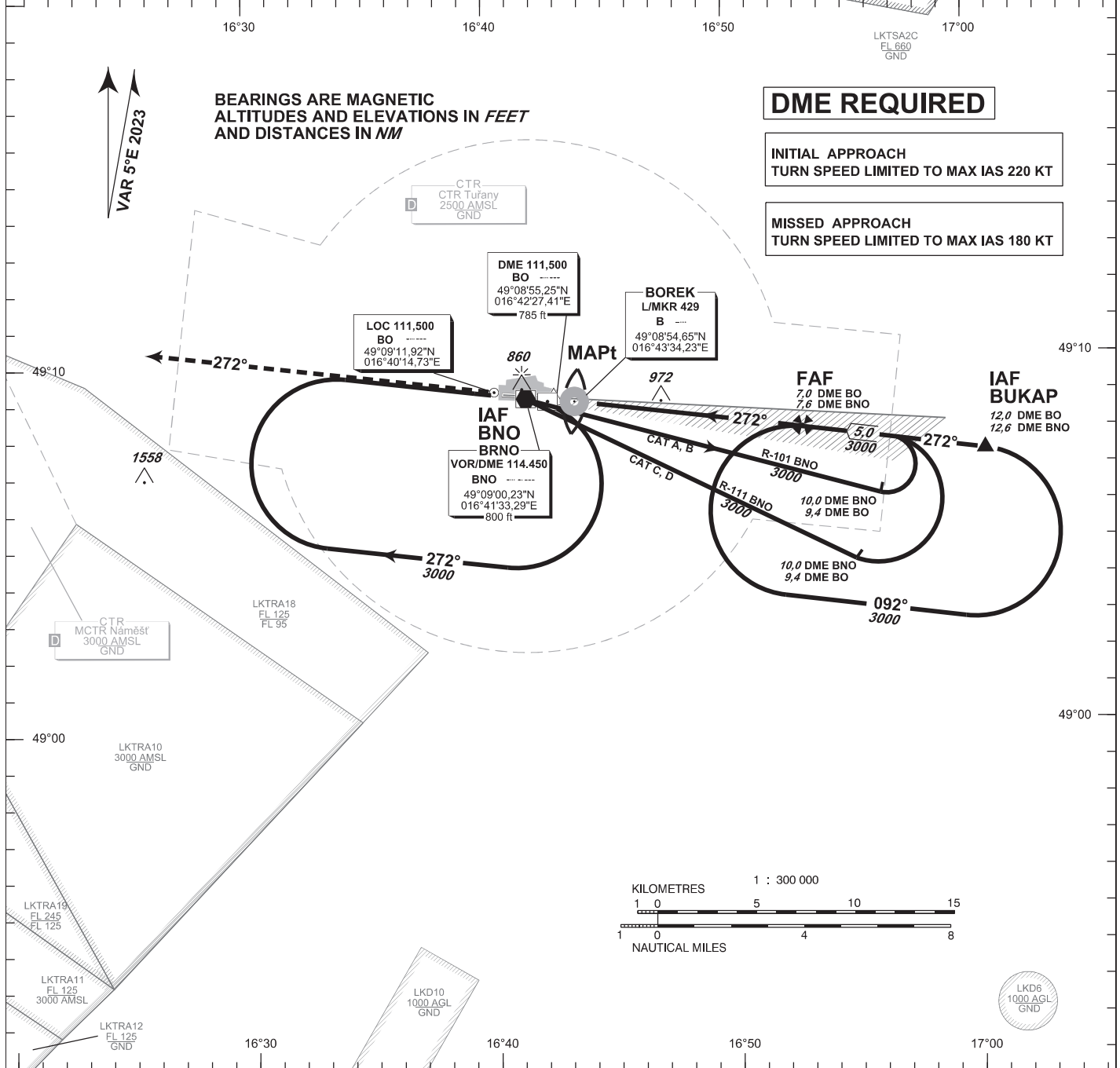
TUŘANY/TOWER 119,605
125,430
121,500

PRAHA RADAR 127,350
121,500



BRNO/Tuřany ILS

RWY 27

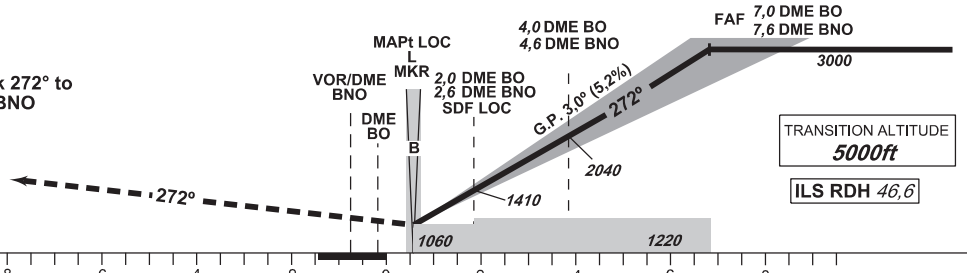


MISSED APPROACH:

Climb on track 272° to 4000 ft AMSL, expect vectoring. In case of RCF climb on track 272° to 8,0 NM DME BNO and turn right to VOR/DME BNO in climbing to 4000 ft AMSL.

THR 490859.12N 0164242.82E
ELEV 771

NM FM THR27



OCA/OCH		A	B	C	D
Straight - in	Cat I	ft 927/156	939/169	947/176	958/188
	Approach	ft	1060/290		
Circling (South of AD Only)		ft 1210/-	1440/-	1560/-	1740/-

DME BO NM	7	6	5	4	3	2	1
DME BNO NM	7,6	6,6	5,6	4,6	3,6	2,6	1,6
DIST THR NM	6,8	5,8	4,8	3,8	2,8	1,8	0,8
ALTITUDES ft	3000	2680	2360	2040	1720	1410	1090

FAF - MAPt 6,3 NM	kt	80	100	120	140	160	180
min:sec	4:42	3:46	3:08	2:41	2:21	2:06	
Rate of descent	ft/min	420	530	640	740	850	960

change: correction of VOR/DME BNO label

Timing is not authorized for defining the MAPt.