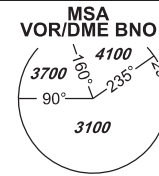


INSTRUMENT APPROACH CHART - ICAO

AERODROME ELEV 778
THR RWY 27 ELEV 771

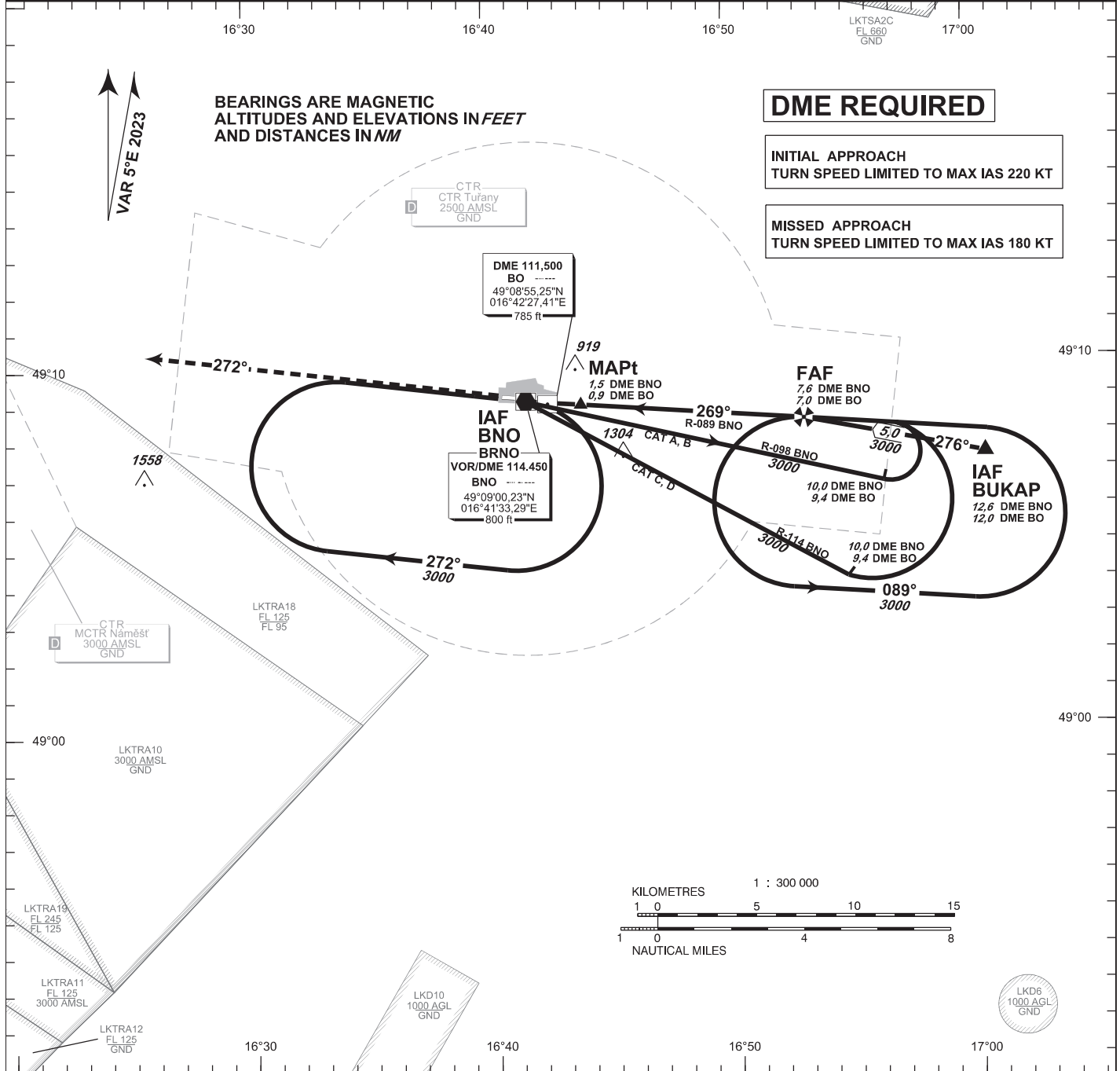
TUŘANY/TOWER 119,605
125,430
121,500

PRAHA RADAR 127,350
121,500



BRNO/Tuřany VOR

RWY 27

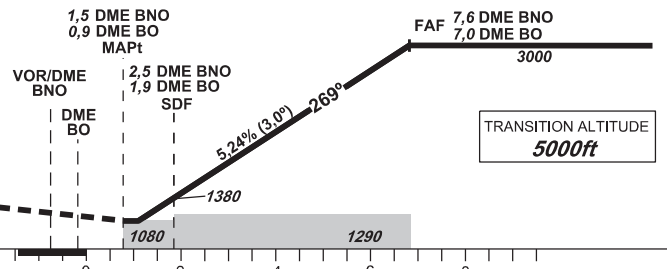


MISSED APPROACH:

Climb on track 272° to 4000 ft AMSL, expect vectoring. In case of RCF climb on track 272° to 8,0 NM DME BNO and turn right to VOR/DME BNO in climbing to 4000 ft AMSL.

THR 490859.12N 0164242.82E
ELEV 771

NM FM THR27



TRANSITION ALTITUDE
5000ft

OCA/OCH	A	B	C	D
Straight - in Approach	ft 1080/300			
Circling (South of AD Only)	ft 1210/-	1440/-	1560/-	1740/-

DME BNO /NM	7	6	5	4	3	2
DME BO /NM	6,4	5,4	4,4	3,4	2,4	1,4
DIST THR /NM	6,2	5,2	4,2	3,2	2,2	1,2
ALTITUDES ft	2810	2490	2170	1850	1530	1220

	kt	100	120	140	160	180	
FAF - MAPt 6,1 NM	min:sec	4:34	3:39	3:03	2:37	2:17	2:02
Rate of descent	ft./min	420	530	640	740	850	960

change: correction of VOR/DME BNO label

Timing is not authorized for defining the MAPt.