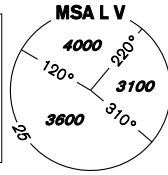


INSTRUMENT APPROACH CHART - ICAO

AERODROME ELEV **919**
THR RWY 28 ELEV **915**
OCH RELATED TO THR RWY 28

VODOCHODY
RADAR **127,480**
TOWER **133,080**
121,500

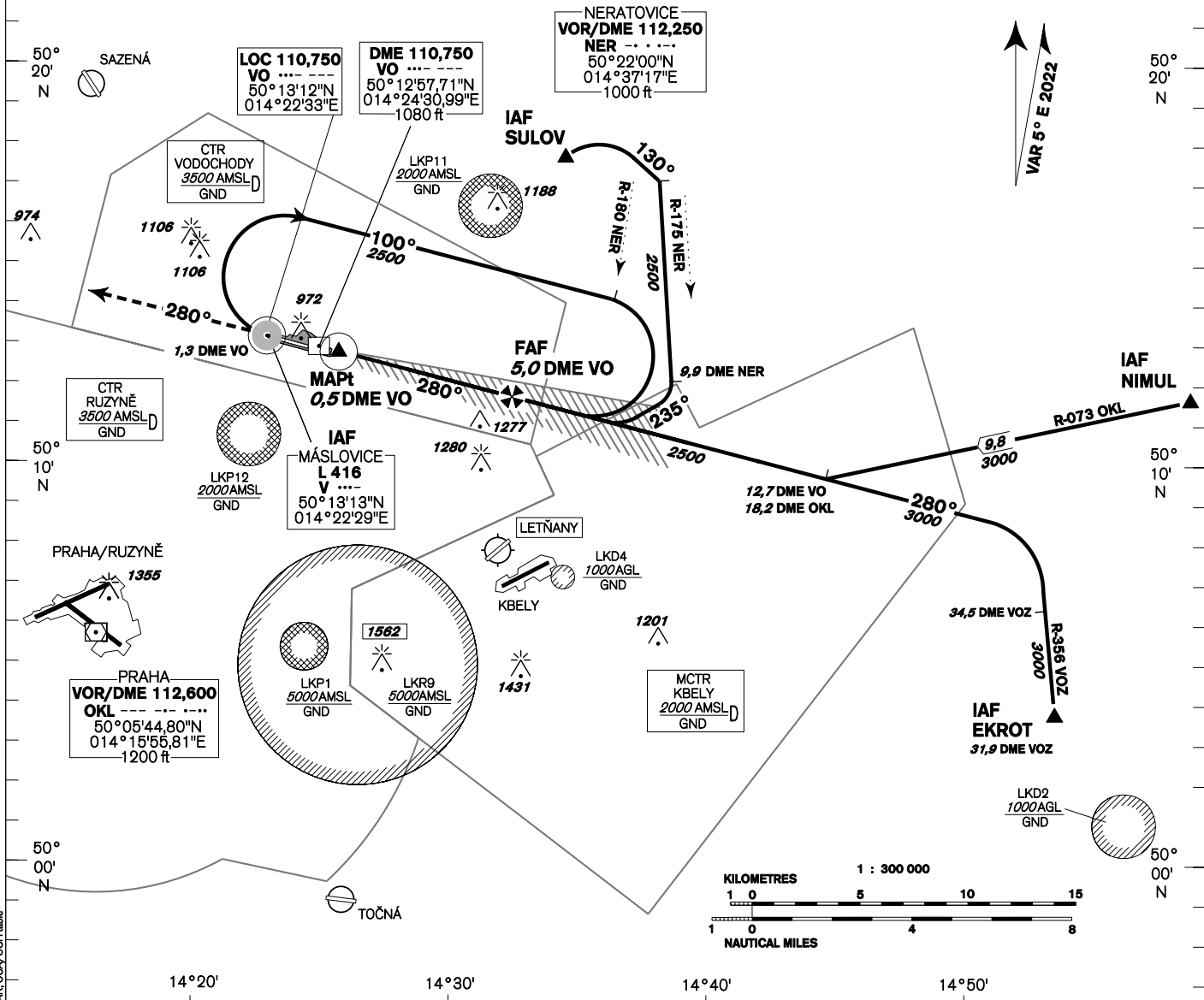


PRAHA/VODOCHODY ILS Z RWY 28 (ACFT CAT C)

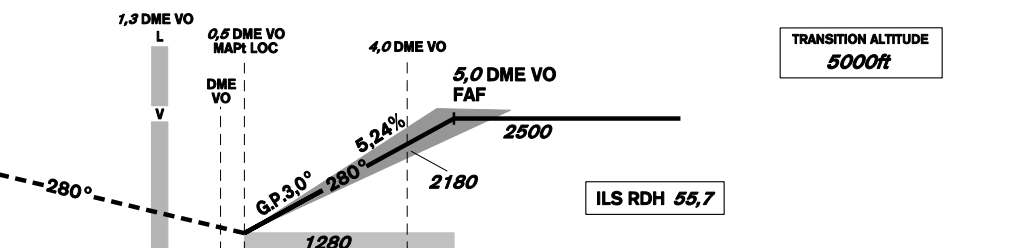
BEARINGS, TRACKS AND RADIALS ARE MAGNETIC
ALTITUDES AND ELEVATIONS IN *FEET* AND DISTANCES IN *NM*

DME REQUIRED

AFTER IAF SULOV
SPEED LIMITED TO MAX IAS 190 KT



MISSED APPROACH:
Climb on track 280° to **2800ft AMSL**
radar vectoring will be provided
In case of RCF climb on track 280°
to **2800ft AMSL**, at **5,0 DME VO** turn right to L V



THR 501249,66N 0142444,88E
ELEV **915**
NM FM THR 28

OCA/OCH	C
Cat I	ft 1086/171
LOC	ft 1280/360
Circling (north of AD only)	ft 1520/600

DME VO NM	5	4	3	2	1
DIST THR NM	4,8	3,8	2,8	1,8	0,8
ALTITUDES ft	2500	2180	1860	1540	1230

kt	80	100	120	140	160	180
FAF - MAPt 4,5 NM	min:sec 3:23	2:42	2:15	1:56	1:41	1:30
Rate of descent 5,24%	ft/min 420	530	640	740	850	960

Timing is not authorized for defining the MAPt.

change: MISSED APPROACH procedures; new IAF NIMITZ; MAG VAR; OCA/OCH table