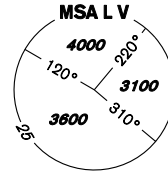


INSTRUMENT APPROACH CHART - ICAO

AERODROME ELEV 919
THR RWY 28 ELEV 915
OCH RELATED TO THR RWY 28

VODOCHODY
RADAR 127,480
TOWER 133,080
121,500



PRAHA/VODOCHODY RNP RWY 28 (ACFT CAT A,B,C)

BEARINGS, TRACKS AND RADIALS ARE MAGNETIC
ALTITUDES AND ELEVATIONS IN FEET AND DISTANCES IN NM

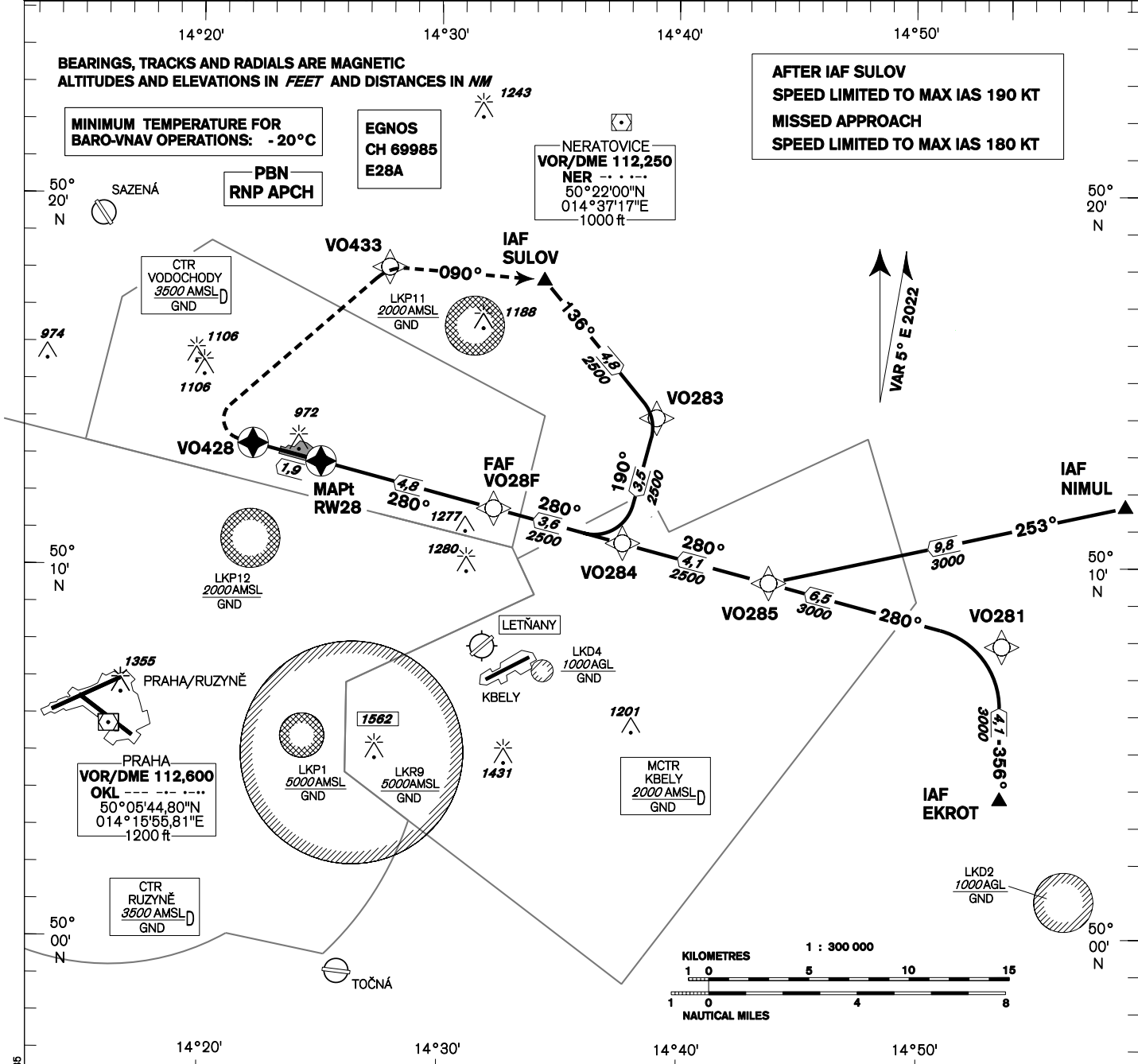
MINIMUM TEMPERATURE FOR
BARO-VNAV OPERATIONS: -20°C

PBN
RNP APCH

EGNOS
CH 69985
E28A

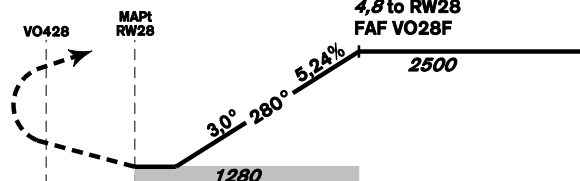
NERATOVICE
VOR/DME 112,250
NER ---
50°22'00"N
014°37'17"E
1000 ft

AFTER IAF SULOV
SPEED LIMITED TO MAX IAS 190 KT
MISSED APPROACH
SPEED LIMITED TO MAX IAS 180 KT



MISSED APPROACH:
Climb to VO428 (fly-over), turn right to VO433 (fly-by),
continue to SULOV in climbing to 2500ft AMSL

TRANSITION ALTITUDE
5000ft



TCH 49,2

change: course and distance from IAF NIMUL to VO285

THR 501249,66N 0142444,88E
ELEV 915

NM FM THR28

| OCA/OCH | | A | B | C |
|-----------------------------|----|----------|----------|----------|
| LNAV | ft | | 1280/370 | |
| LNAV/VNAV | ft | | 1176/261 | |
| LPV | ft | | 1115/200 | |
| Circling (north of AD only) | ft | 1330/410 | 1420/500 | 1510/800 |

| DIST THR NM | 4,8 | 4 | 3 | 2 | 1 |
|--------------|------|------|------|------|------|
| ALTITUDES ft | 2500 | 2240 | 1920 | 1600 | 1280 |

| | kt | 80 | 100 | 120 | 140 | 160 | 180 |
|-----------------------|---------|------|------|------|------|------|------|
| FAF - MAPt 4,8 NM | min:sec | 3:36 | 2:53 | 2:24 | 2:03 | 1:48 | 1:36 |
| Rate of descent 5,24% | ft/min | 420 | 530 | 640 | 740 | 850 | 960 |

Timing is not authorized for defining the MAPt.

Posloupnost traťových bodů / Way point sequence

| Od / From IAF NIMUL | | | Od / From IAF EKROT | | | Od / From IAF SULOV | | | Seznam traťových bodů / Way point list | | |
|---------------------|------|----------|---------------------|------|----------|---------------------|------|----------|--|---------------|----------------|
| NIMUL | IAF | fly-by | EKROT | IAF | fly-by | SULOV | IAF | fly-by | NIMUL | 50 11 38,09 N | 014 58 30,00 E |
| VO285 | | fly-by | VO281 | | fly-by | VO283 | | fly-by | EKROT | 50 03 46,00 N | 014 53 13,00 E |
| VO284 | IF | fly-by | VO285 | | fly-by | VO284 | IF | fly-by | SULOV | 50 17 44,26 N | 014 34 05,85 E |
| VO28F | FAF | fly-by | VO284 | IF | fly-by | VO28F | FAF | fly-by | VO281 | 50 07 53,45 N | 014 53 18,80 E |
| RW28 | MAPt | fly-over | VO28F | FAF | fly-by | RW28 | MAPt | fly-over | VO283 | 50 14 01,95 N | 014 38 49,47 E |
| VO428 | | fly-over | RW28 | MAPt | fly-over | VO428 | | fly-over | VO284 | 50 10 39,78 N | 014 37 24,59 E |
| VO433 | | fly-by | VO428 | | fly-over | VO433 | | fly-by | VO28F | 50 11 35,23 N | 014 31 59,99 E |
| SULOV | | fly-by | VO433 | | fly-by | SULOV | | fly-by | RW28 | 50 12 49,66 N | 014 24 44,89 E |
| | | | SULOV | | fly-by | | | | VO428 | 50 13 18,88 N | 014 21 53,34 E |
| | | | | | | | | | VO433 | 50 18 04,42 N | 014 27 35,33 E |

SBAS FAS Data Block

Vstupní data / Input Data

| Parametry / Parameters | Hodnoty / Values |
|-------------------------------------|------------------|
| Operation Type | 0 |
| SBAS Provider | 1 (EGNOS) |
| Airport Identifier | LKVO |
| Runway | 28 |
| Runway Direction | 0 (None) |
| Approach Performance Designator | 0 |
| Route Indicator | |
| Reference Path Data Selector | 0 |
| Reference Path Identifier | E28A |
| LTP/FTP Latitude | 501249.6600N |
| LTP/FTP Longitude | 0142444.8800E |
| LTP/FTP Ellipsoidal Height (metres) | 323.7 |
| FPAP Latitude | 501310.4300N |
| Delta FPAP Latitude (seconds) | 20.7700 |
| FPAP Longitude | 0142243.0000E |
| Delta FPAP Longitude (seconds) | -121.8800 |
| Threshold Crossing Height | 49.2 |
| TCH Units Selector | 0 (feet) |
| Glidepath Angle (degrees) | 3.00 |
| Course Width (metres) | 105.00 |
| Length Offset (metres) | 0 |
| HAL (metres) | 40.0 |
| VAL (metres) | 35.0 |

Výstupní data / Output Data

| Parametry / Parameters | Hodnoty / Values |
|------------------------|--|
| Data Block | 10 0F 16 0B 0C 1C 00 00 01 38 32 05 F8 A6 8C 15 A0 66 2F 06 A5 20 44 A2 00 D0 47 FC EC 01 2C 01 64 00 C8 AF 66 5A DF 4C |
| Calculated CRC Value | 665ADF4C |

Required Additional Data (not CRC wrapped)

These additional data are not required for CRC calculation, but they need to be provided to datahouses for procedure coding in ARINC 424 records.

| Parametry / Parameters | Hodnoty / Values |
|-------------------------------------|------------------|
| ICAO Code | LK |
| LTP/FTP Orthometric Height (metres) | 279.0 |