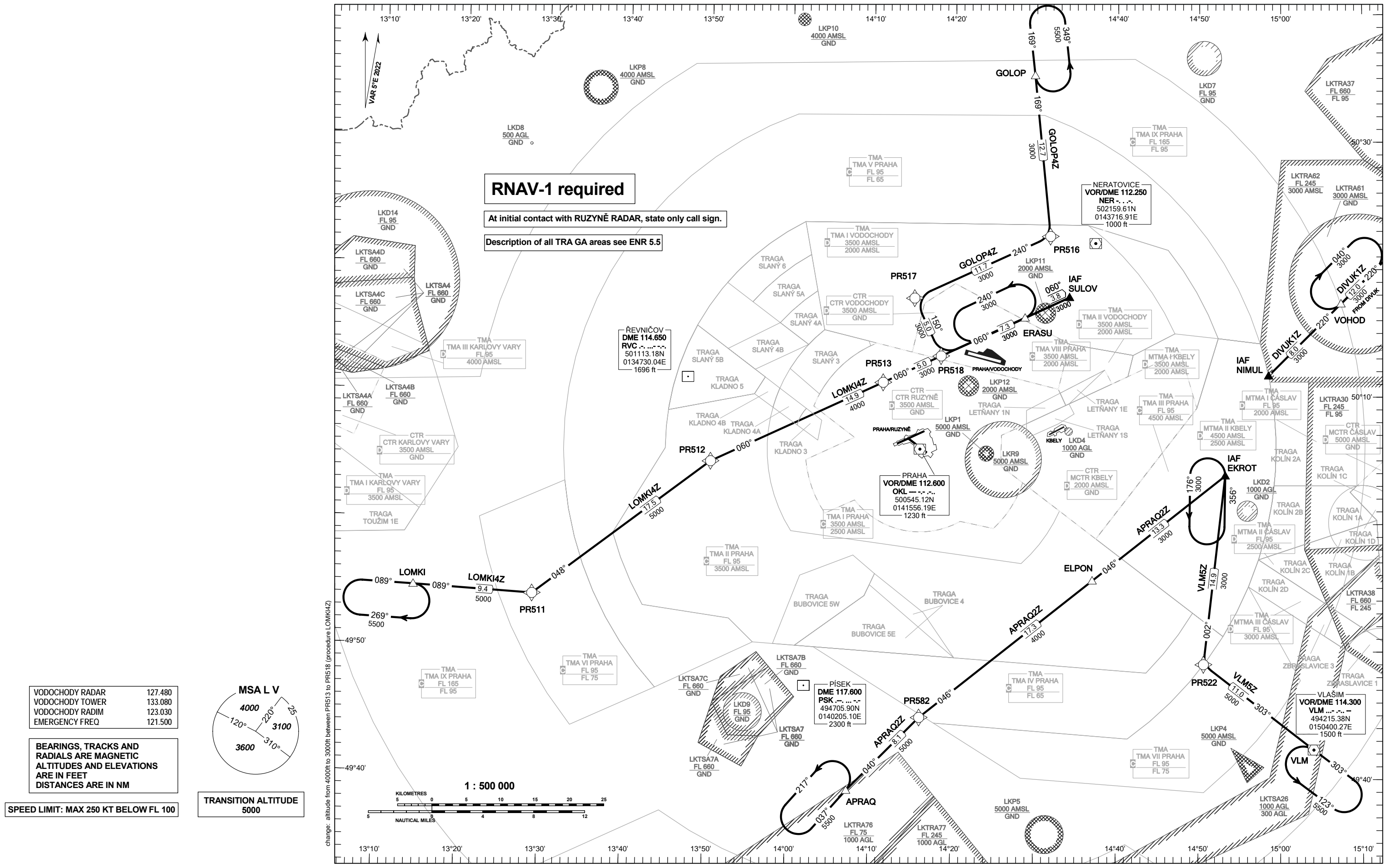


**STANDARD ARRIVAL CHART - INSTRUMENT
(STAR) - ICAO**

**PRAHA/VODOCHODY
RNAV STAR RWY 10-28**



RNAV-1 required

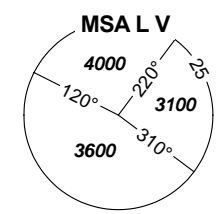
At initial contact with RUZYŇ RADAR, state only call sign.

Description of all TRA GA areas see ENR 5.5

VODOCHODY RADAR	127.480
VODOCHODY TOWER	133.080
VODOCHODY RADIM	123.030
EMERGENCY FREQ	121.500

BEARINGS, TRACKS AND RADIALS ARE MAGNETIC
ALTITUDES AND ELEVATIONS ARE IN FEET
DISTANCES ARE IN NM

SPEED LIMIT: MAX 250 KT BELOW FL 100



TRANSITION ALTITUDE
5000

