

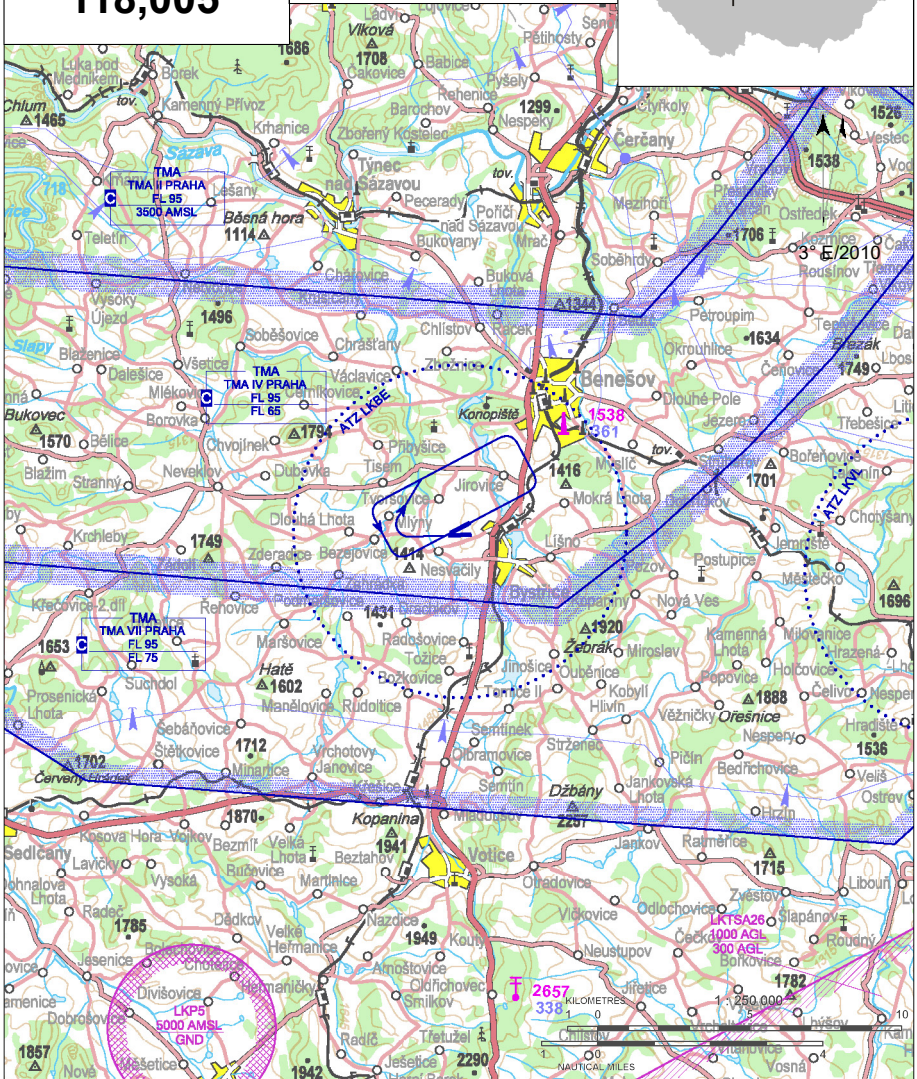
LKBE Benešov

§ Public domestic aerodrome / Private international aerodrome ✈ VFR day/night



Bene RADIO
118,005

ARP: 49° 44' 27" N, 14° 38' 41" E
5,6 km SSW Benešov
ELEV: 1322 ft / 403 m
Circuit: 2460 ft / 750 m AMSL



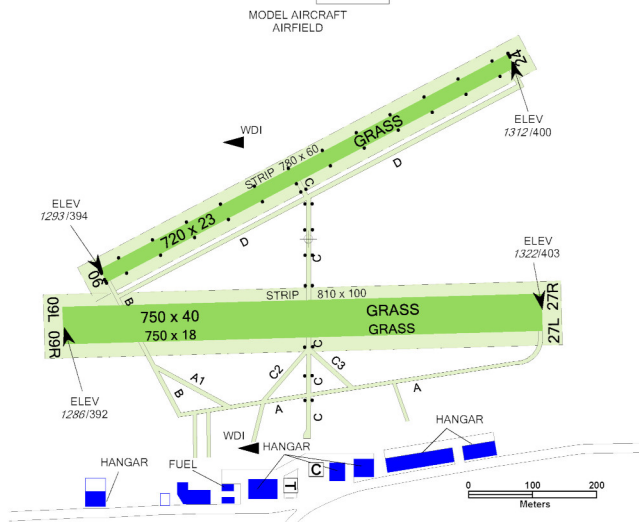
! In Aerodrome Traffic Zone (ATZ) avoid flying in a distance less than 300 m from villages or fly in MNM altitude 2 953 ft / 900 m AMSL.

LKBE Benešov



Bene RADIO
118,005

RWY	Magnetic direction	RWY dimensions	Strength	TORA	TODA	ASDA	LDA
06	060°	720 x 23	5700 kg / 0.7 MPa	720	750	720	720
24	240°	720 x 23	5700 kg / 0.7 MPa	720	750	720	720
09R	087°	750 x 18	5700 kg / 0.7 MPa	750	780	750	750
27L	267°	750 x 18	5700 kg / 0.7 MPa	750	780	750	750
09L	087°	750 x 40	5700 kg / 0.7 MPa	750	780	750	750
27R	267°	750 x 40	5700 kg / 0.7 MPa	750	780	750	750



Letiště Benešov, př. org. města Bystřice

Nesvačily 0145, 257 51 Bystřice,

☎/📠 +420 317 793 330, info@lkbe.eu,
www.lkbe.eu

Vladimír Hadač (director) ☎ +420 604 839 808

Jaromír Fatka (head of air traffic) ☎ +420 732 146 484

Providing information to known traffic

☎ +420 603 594 623, ☎ +420 317 793 330

GAC ☎ +420 603 927 241, gac@centrum.cz

Bemoair ☎ +420 604 842 624, info@bemoair.cz

F-air ☎/📠 +420 317 793 820, f-air@f-air.cz

Customs and immigration clearance: O/R, till 1000 (0900) of the previous working day and 24 HR in advance. Visas are not granted.

RWY 09L/R can be used for take-offs only with the approval of officer of unit Providing information to known traffic. After take-off from RWY 09L/R turn left heading 045° and after take-off from RWY 24L/R turn right heading 270° in order to avoid the villages.



1 APR - 31 OCT 0800-1500
1 NOV - 15 DEC 0900-1300
6 JAN - 31 MAR 0900-1300
otherwise O/R 24 HR in advance



aviation petrol GASOLINE AKI 93, AVGAS 100LL. Payment possible only by credit card.



TOTAL D100, TOTAL 15W50, AEROSHELL 15W50, AEROSHELL sport plus



O/R



O/R



at aerodrome limited, Bystřice 2 km, Benešov 7 km



restaurant at the airport



bus, train Bystřice 1,5 km, taxi O/R

