


# LKBR Broumov

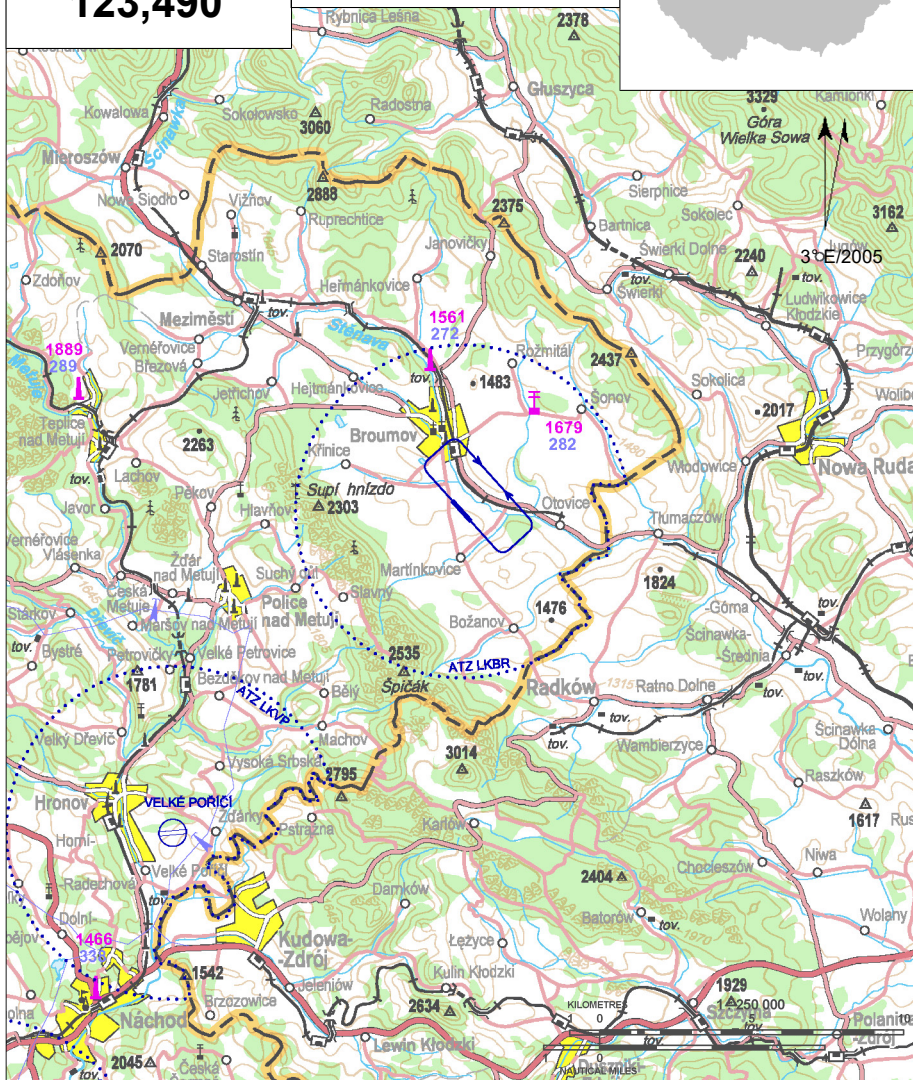
 Public domestic aerodrome


 VFR day



**Broumov RADIO**  
**123,490**

**ARP:** 50° 33' 43" N, 16° 20' 34" E  
2,5 km Broumov  
**ELEV:** 1342 ft / 409 m  
**Circuit:** 2330 ft / 710 m AMSL



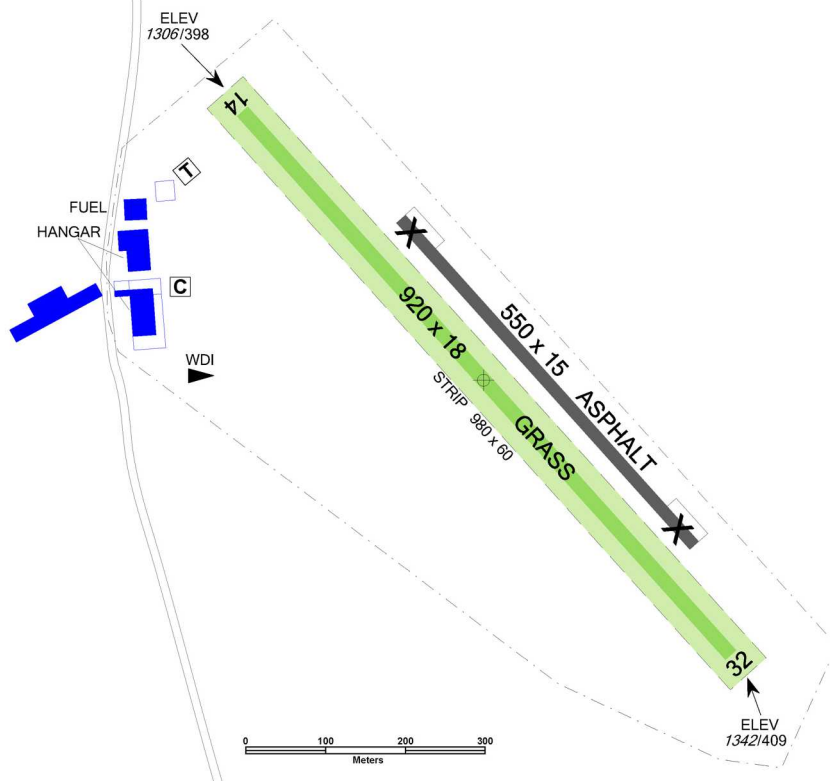
 There is an telecommunication mast between crosswind turn and downwind turn for RWY 14L. Height 47 m AGL, coordination 50 33 34,42 N 016 22 00,42.

# LKBR Broumov



**Broumov RADIO**  
**123,490**

RWY	Magnetic direction	RWY dimensions	Strength	TORA	TODA	ASDA	LDA
14	137°	920 x 18	5700 kg / 0.34 MPa	920	1020	920	920
32	317°	920 x 18	5700 kg / 0.34 MPa	920	960	920	920



**Benediktinský aeroklub Broumov z.s.**

letišťe, 550 01 Broumov, ☎ +420 728 227 042,  
info@airbroumov.eu

Michal Janda ☎ +420 776 638 115,

michal.broumov@seznam.cz

Pavel Kroupa ☎ +420 603 773 686,

pavel.kroupa@seznam.cz

Václav Kult ☎ +420 774 835 962, vaclav.kult@email.cz

Customs and immigration clearance: NIL

Asphalt strip, which is part of airfield, is unusable.



15 APR - 15 OCT  
SAT, SUN, HOL 0700 - 1400



natural 95



NIL



limited



limited



20 persons at the aerodrome, O/R



NIL



bus Broumov - Božanov, bus stop LETIŠTĚ

