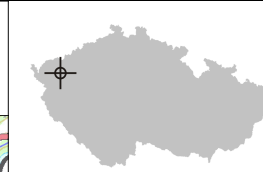




LKKV Karlovy Vary

ARP: 50° 12' 11" N, 12° 54' 54" E
 4,5 km SE Karlovy Vary
 ELEV: 1989 ft / 606 m

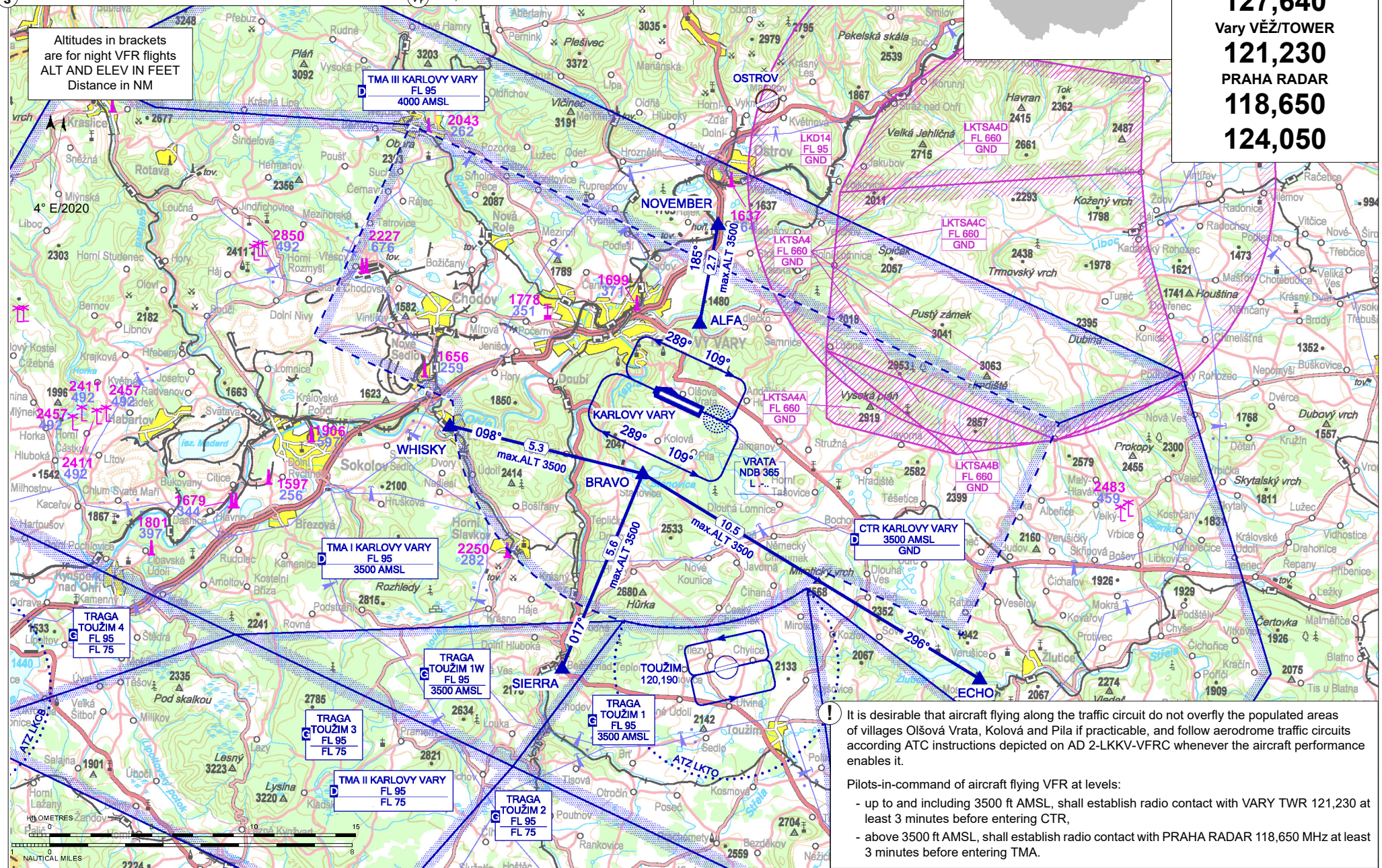



Karlovy Vary ATIS
127,640
Vary VĚŽ/TOWER
121,230
PRAHA RADAR
118,650
124,050

 Public international aerodrome

 IFR, VFR

Altitudes in brackets
 are for night VFR flights
 ALT AND ELEV IN FEET
 Distance in NM



It is desirable that aircraft flying along the traffic circuit do not overfly the populated areas of villages Olšová Vrata, Kolová and Pila if practicable, and follow aerodrome traffic circuits according ATC instructions depicted on AD 2-LKKV-VFRC whenever the aircraft performance enables it.

- Pilots-in-command of aircraft flying VFR at levels:
- up to and including 3500 ft AMSL, shall establish radio contact with VARY TWR 121,230 at least 3 minutes before entering CTR,
 - above 3500 ft AMSL, shall establish radio contact with PRAHA RADAR 118,650 MHz at least 3 minutes before entering TMA.

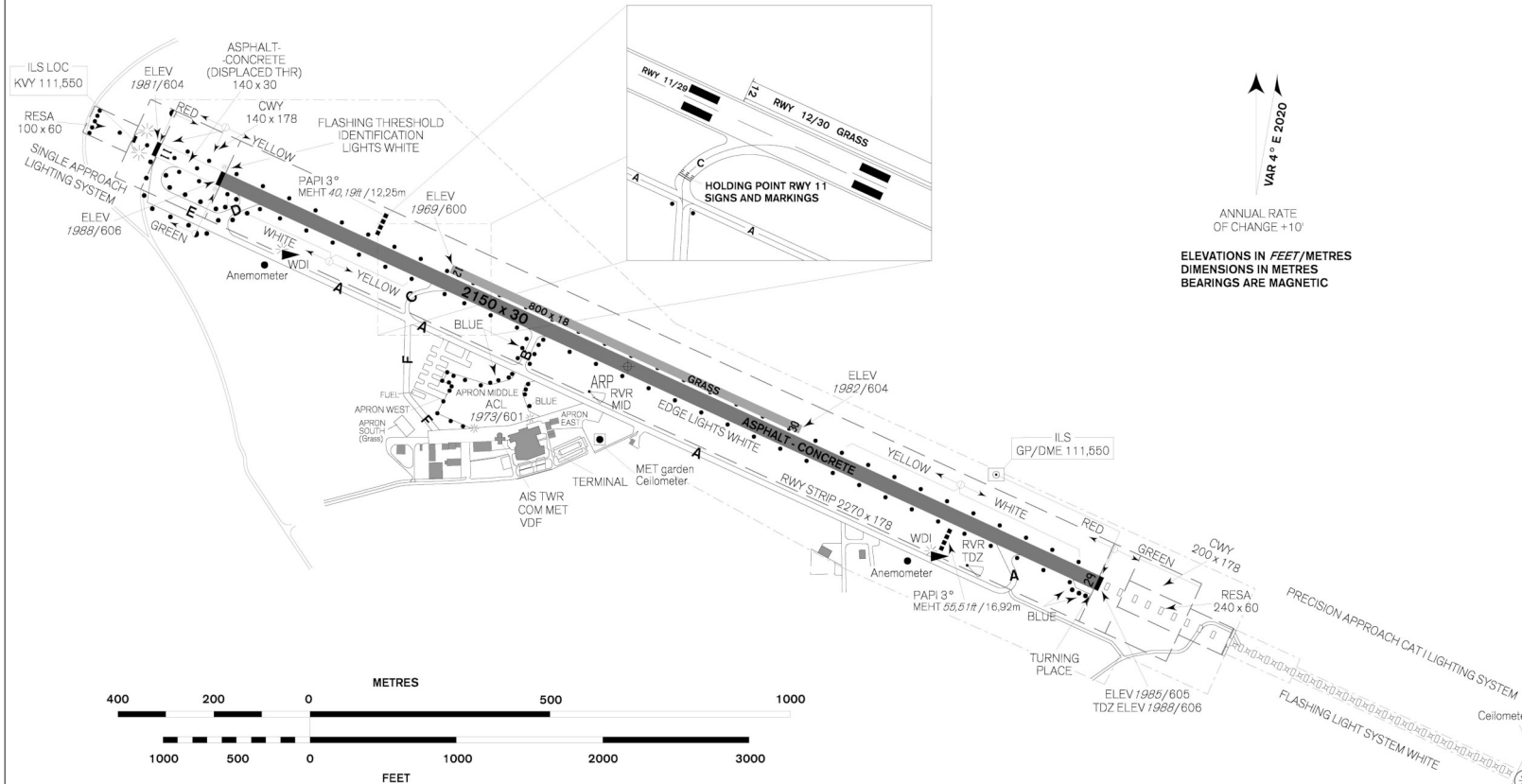
DESIGNATION	LOCATION	COORDINATES	
ALFA	Hotel Hubertus parking lot	50° 14' 16" N 012° 55' 40" E	Holding
BRAVO	Stanovice (north bank of the dam)	50° 10' 15" N 012° 53' 30" E	Holding
ECHO	Žlutice (dam)	50° 05' 03" N 013° 07' 36" E	Entry / exit
NOVEMBER	Pond Velká Nejda	50° 16' 54" N 012° 56' 19" E	Entry / exit
SIERRA	Bečov	50° 05' 02" N 012° 50' 24" E	Entry / exit
WHISKY	Loket	50° 11' 22" N 012° 45' 29" E	Entry / exit

ARRIVAL ROUTES	WAYPOINT SEQUENCE
NOVEMBER 1	NOVEMBER - ALFA
ECHO 1	ECHO - BRAVO
SIERRA 1	SIERRA - BRAVO
WHISKY 1	WHISKY - BRAVO
DEPARTURE ROUTES	WAYPOINT SEQUENCE
NOVEMBER 1	After departure from RWY 11 - Left turn DCT NOVEMBER After departure from RWY 29 - Right turn DCT NOVEMBER
ECHO 1	After departure from RWY 11 - Right turn DCT ECHO After departure from RWY 29 - Left turn DCT ECHO
SIERRA 1	After departure from RWY 11 - Right turn DCT SIERRA After departure from RWY 29 - Left turn DCT SIERRA
WHISKY 1	After departure from RWY 11 - Right turn DCT WHISKY After departure from RWY 29 - Left turn DCT WHISKY

LKKV Karlovy Vary



Vary VĚŽ/TOWER
121,230



Airport Karlovy Vary
K Letišti 132, 360 01 Karlovy Vary, ☎ +420 353 360 636, handling@airport-k-vary.cz, SITA: KLVZCXH
operator, handling - ☎ +420 353 360 611
director - ☎ +420 353 360 610
handling for diversions - ☎ +420 731 195 004
rescue and fire-fighting service unit - ☎ +420 353 360 614
Security unit (H24) - ☎ +420 353 360 618
traffic controller (winter maintenance) - ☎ +420 731 195 016

⌚ In period of Central European Summer Time validity (summer season) MON - SUN (0600 - 1700) (UTC)
In period of Central European Time validity (winter season) MON - SUN 0700 - 1500 (UTC)

⛽ JET A1, AVGAS 100 LL
⚙️ Total AERO D 100, Total AERO D 80, Total AERO DM 15W50

🚗 Available on request at AD operator - ☎ +420 353 360 611

🛑 NIL
🏠 In the city.

✂️ Fast food in public terminal, snack bar in departure area of terminal - available only during check-in of scheduled and chartered flights.

🚗 Municipal traffic, taxi, private carrier.

Customs and immigration clearance: As AD Administration.

In case of aircraft instructed by TWR to taxi to holding point RWY 29 via TWY A is not able to depart from RWY 29 from intersection A, pilot-in-command shall advise that to TWR prior commencing taxi.

When taxiing to RWY 12/30 pilot has to stop on marked holding positions and request clearance for crossing RWY 11/29.

When taxiing from RWY 12/30 to the apron the pilot has to request clearance before crossing RWY 11/29.

RWY	Magnetic direction	RWY dimensions	Strength	TORA	TODA	ASDA	LDA
29	289°	2150 x 30	PCN 54/F/A/X/T	2010	2150	2010	2010
11	109°	2150 x 30	PCN 54/F/A/X/T	2150	2350	2150	2010
30	289°	800 x 18	5600 kg / 0.7 MPa	800	800	800	800
12	109°	800 x 18	5600 kg / 0.7 MPa	800	800	800	800

LKKV Karlovy Vary

Parking / Docking Chart

