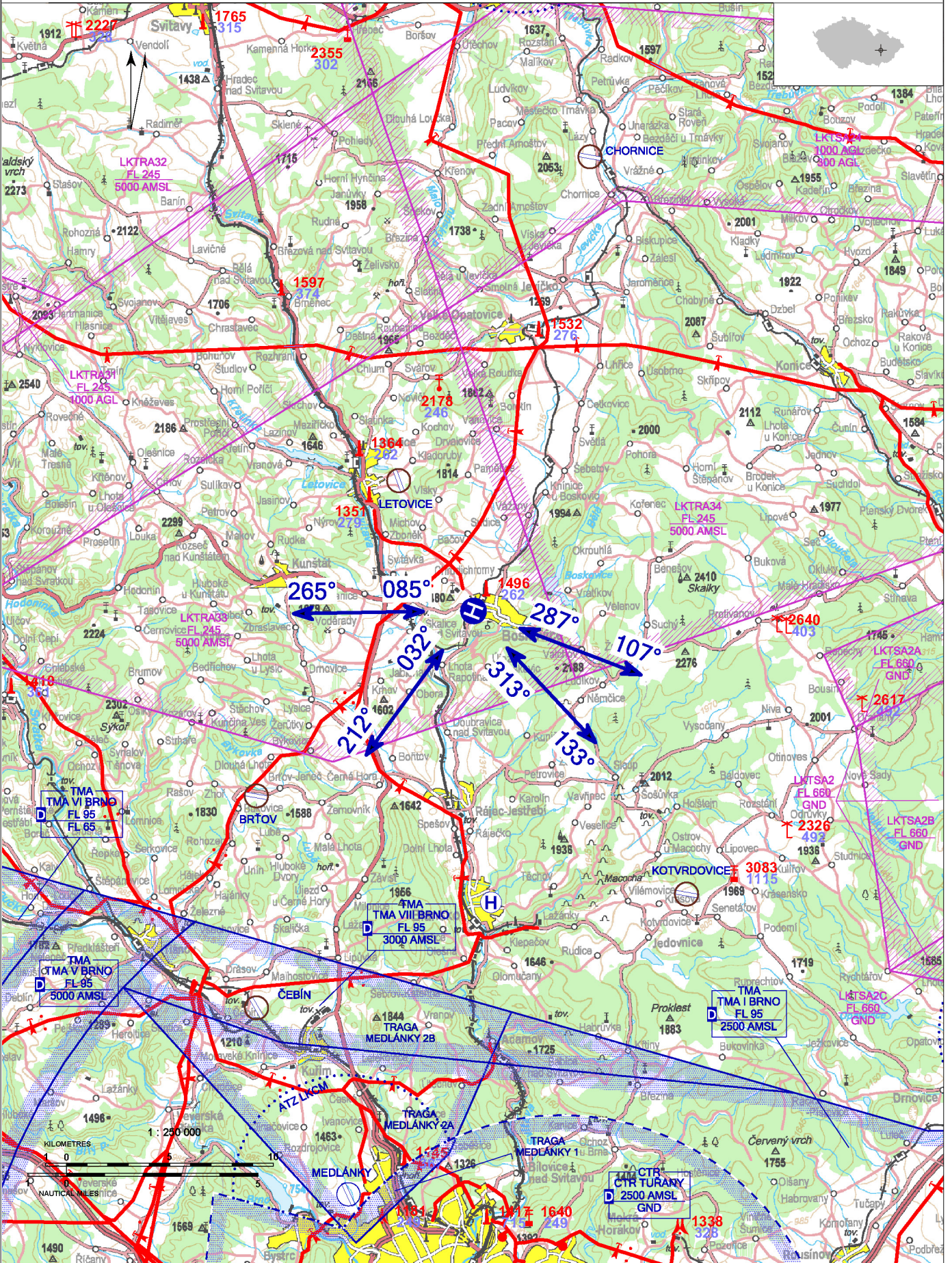


LKBS - Boskovice

Private domestic heliport HEMS

VFR day

49 29 22,57 N, 016 38 46,61 E POS: 1 km W Boskovice city center ELEV: 1198 ft / 365 m

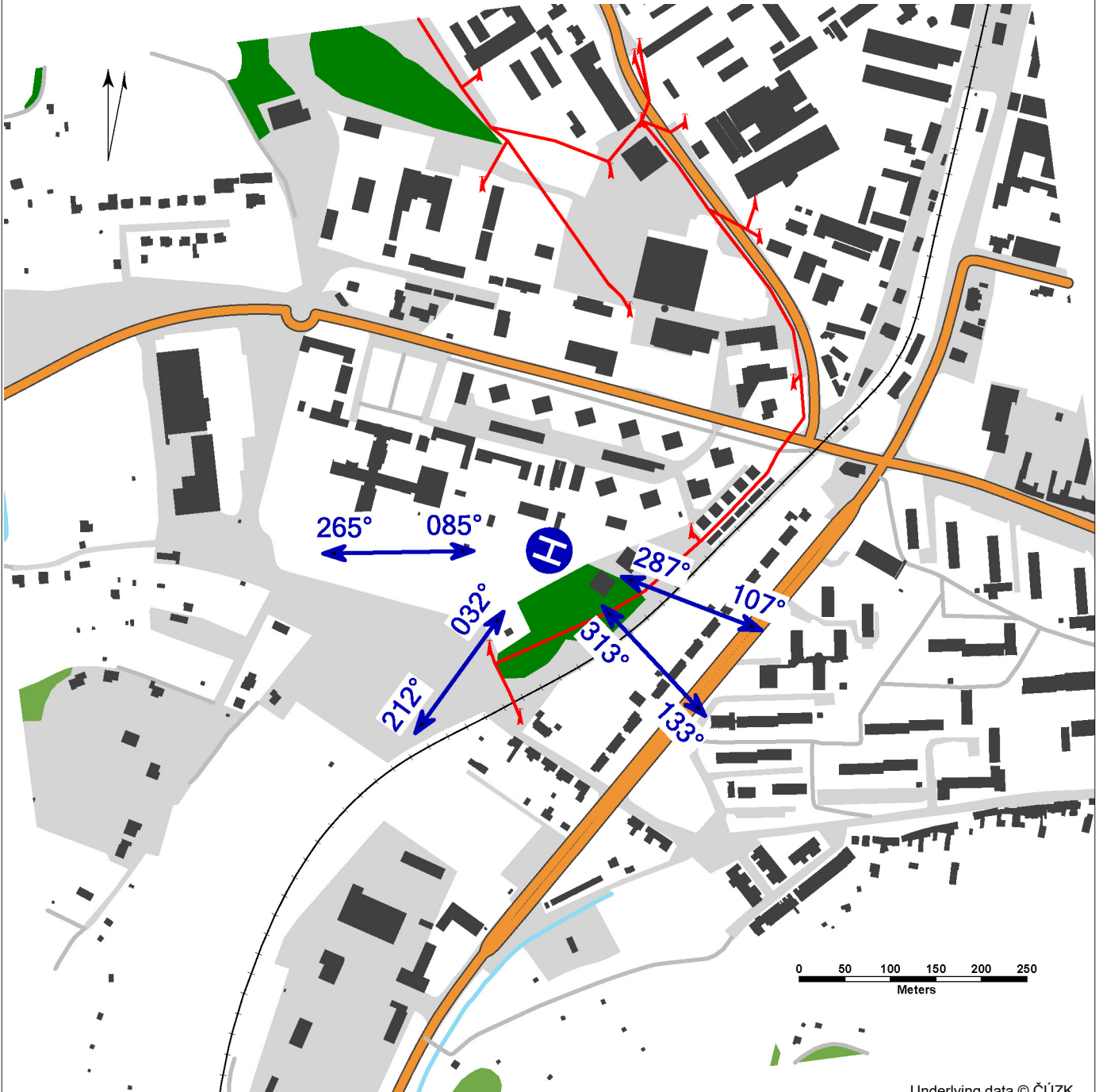


! Only HEMS flights allowed.

LKBS - Boskovice

heliport HEMS heliport
 value „D“ – 17 m (limitedly 19 m)
 FATO – square 26 x 26 m, grass
 SA – square 44 x 44 m, grass
 TLOF – square 10 x 10 m, bitumen, strength 6100 kg/ 0,4 MPa (limitedly 6400 kg/ 0,4 MPa)

WDI (40 m NNW)
 FATO: perimeter marking FATO, designation marking
 TLOF: perimeter marking TLOF



Underlying data © ČÚZK

	Approach:	Take-offs:
VFR day	085°, 032°, 313°, 287°	107°, 133°, 212°, 265°
VFR night	NIL	NIL

Nemocnice Boskovice s.r.o.
 Otakara Kubína 179, 680 01 Boskovice
 Ing. Lubomír Moráň (responsible person of the operator) ☎ +420 737 250 147, lubomir.moran@nembce.cz
 PBX ☎ +420 516 491 111

- 🕒 HX
- 🚰 NIL
- 🚒 NIL
- 🚒 NIL
- 🚒 Rescue and fire service: NIL