

# LKHS Hosín



Public domestic aerodrome

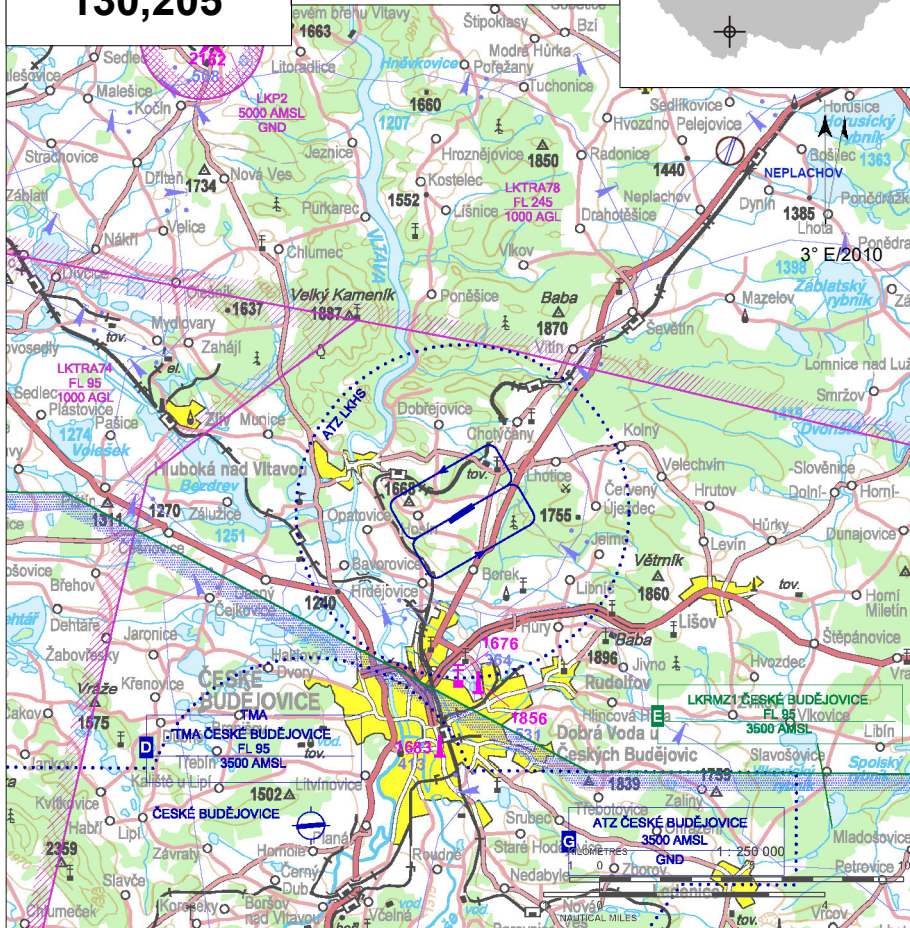


VFR day/night, parachute jumping operation



Hosín RADIO  
**130,205**

ARP: 49° 02' 24" N, 14° 29' 42" E  
7,5 km N České Budějovice  
ELEV: 1621 ft / 494 m  
Circuit: 2600 ft / 800 m AMSL



## Noise abatement

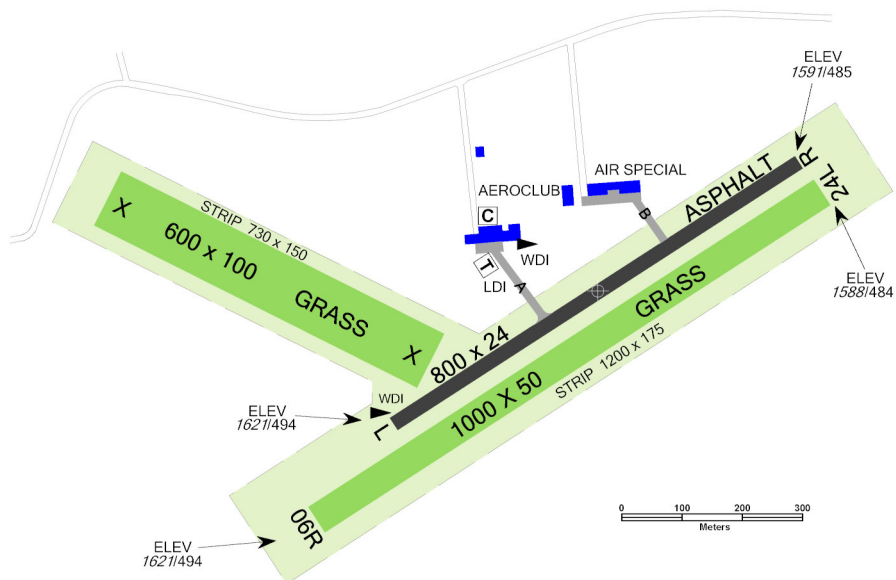
- After take off from RWY 24 turn left to avoid Hosín town.  
Avoid Lhotice town while landing on RWY 24.
- Avoid overflying Lhotice town after take off from RWY 06.  
Avoid Hosín town while landing on RWY 06.
- Flights of powered aeroplanes over surrounding towns at altitudes lower than 2600 ft/800 m AMSL are prohibited due to noise abatement.

# LKHS Hosín



Hosín RADIO  
**130,205**

RWY	Magnetic direction	RWY dimensions	Strength	TORA	TODA	ASDA	LDA
06R	058°	1000 x 50	5700 kg / 0.5 MPa	1000	1100	1000	1000
24L	238°	1000 x 50	5700 kg / 0.5 MPa	1000	1100	1000	1000
06L	058°	800 x 24	PCN 5/F/B/Y/U	800	900	800	800
24R	238°	800 x 24	PCN 5/F/B/Y/U	800	1100	800	800



15 APR - 15 OCT  
SAT, SUN, HOL 0700 - 1400  
otherwise O/R



AVGAS 100LL, BA 98



TOTAL 100 D



O/R, limited



O/R, limited



České Budějovice, Hluboká nad Vltavou,  
28 beds at the aerodrome



15 APR - 15 OCT  
MON - SUN 0800 - 2000



bus, taxi, public transport - bus line No 2  
(Borek) 2 km, No 134 (Hosín) 1 km



## Aeroklub České Budějovice, z.s.

letišťe Hosín, 373 41 Hluboká nad Vltavou,  
☎ +420 387 220 716, 📠 +420 387 220 846,  
aeroklub@letiste-hosin.cz, www.letiste-hosin.cz

Blanka Mádlová - aerodrome manager

☎ +420 777 271 751

Pavel Pígl - head of air traffic ☎ +420 731 410 600

Providing information to known traffic

☎ +420 705 917 102

Customs and immigration clearance: NIL

Carry out taxiing only along RWY and paved TWY or according to instructions of officer of service Providing information to known traffic.

