

LKJC Jičín

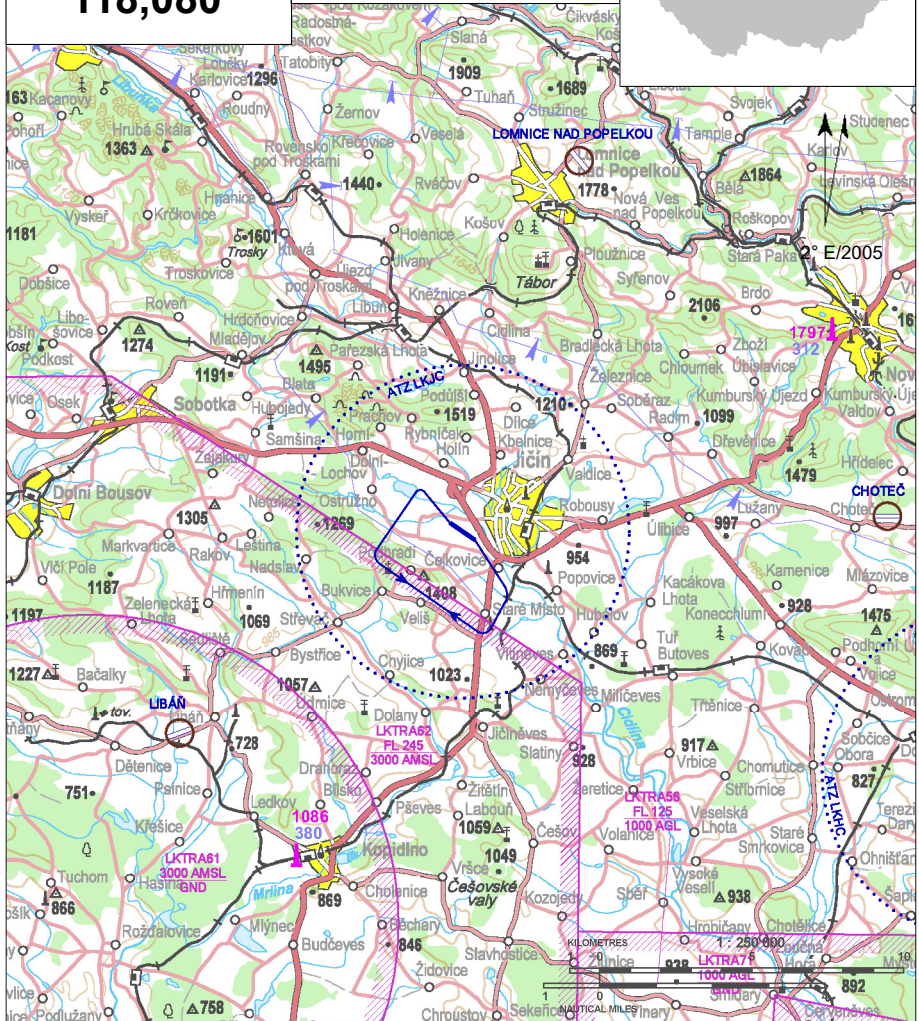
Public domestic aerodrome

VFR day, parachute jumping operation



Jičín RADIO
118,080

ARP: 50° 25' 48" N, 15° 19' 59" E
1,8 km SW from Jičín
ELEV: 863 ft / 263 m
Circuit: 1900 ft / 580 m AMSL



Flights of powered aircraft over the neighbouring villages below the altitude 1900 ft/580 m AMSL are prohibited due to noise abatement.

After departure from RWY 12 fly heading 160° to avoid Čejkovice village.

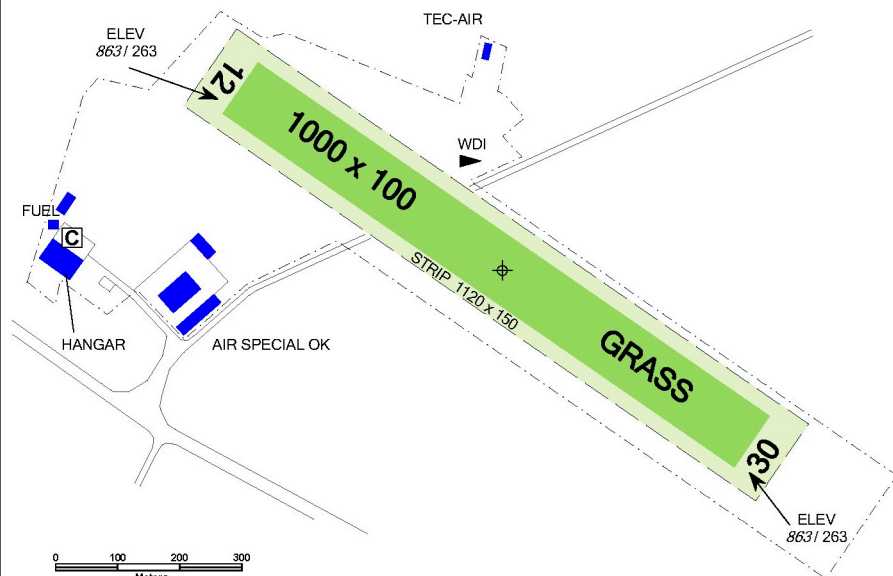
After departure from RWY 30 fly heading 320° to avoid Březina village.

LKJC Jičín



Jičín RADIO
118,080

RWY	Magnetic direction	RWY dimensions	Strength	TORA	TODA	ASDA	LDA
12	123°	1000 x 100	5700 kg / 0.4 MPa	1000	1060	1000	1000
30	303°	1000 x 100	5700 kg / 0.4 MPa	1000	1060	1000	1000



Aeroklub Jičín z.s.

Vokšice 25, 506 01 Podhradí,

☎/📠 +420 493 533 022, info@letistejicin.info

Providing information to known traffic

☎ +420 737 013 013 (during operational hours)

Lukáš Ježek ☎ +420 777 138 837

Ing. Aleš Holoubek - statutory representative

☎ +420 737 253 587

Ing. Roman Koudelka ☎ +420 602 377 007, EN

Jiří Šlemr - head of parachute jumps

☎ +420 602 189 689

Customs and immigration clearance: NIL

Taxi along RWY or according to instructions of officer of Providing information to known traffic.



15 APR - 15 OCT

SAT, SUN, HOL 0800 - 1500

otherwise O/R 24 HR in advance



AVGAS 100 LL, Natural 95



TOTAL 15W50



O/R, limited



NIL



15 people at the aerodrome, otherwise hotels in the town Jičín



NIL



taxi

