

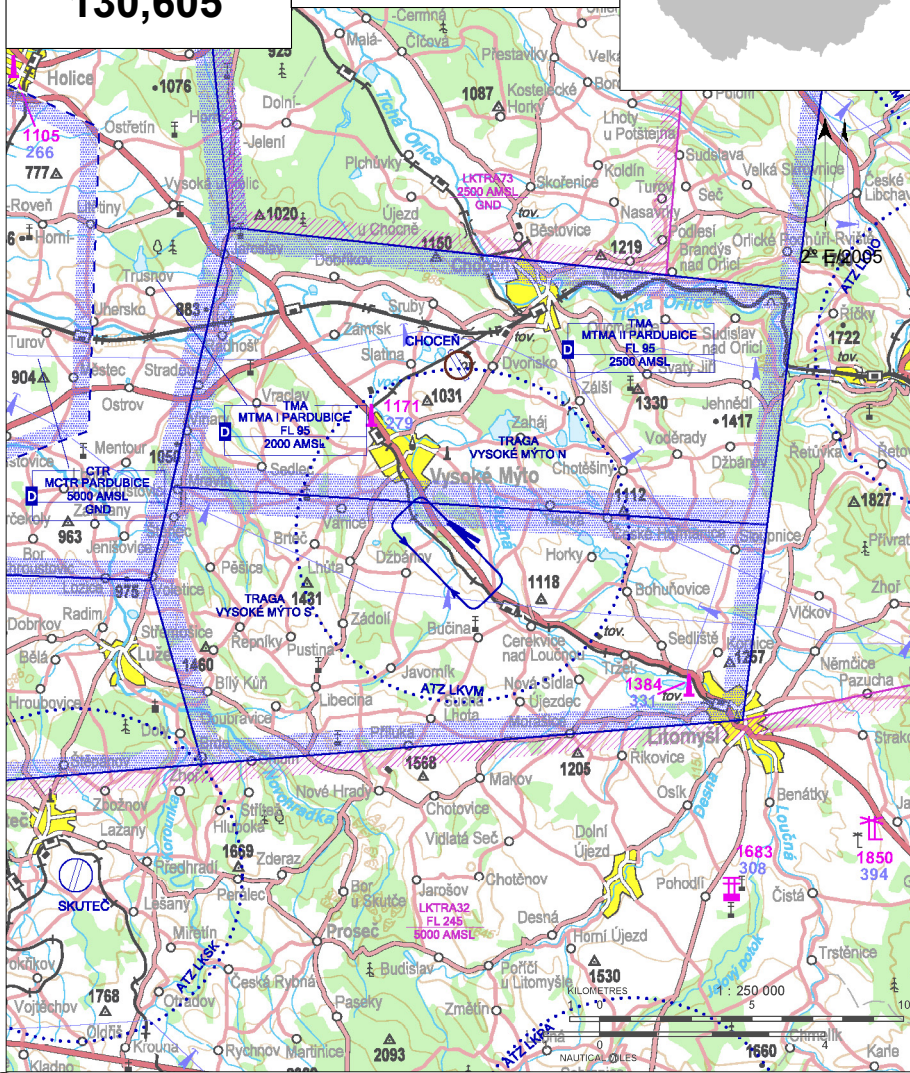
LKVM Vysoké Mýto

§ Public domestic aerodrome / Private international aerodrome ✈ VFR day/night



Mýto RADIO
130,605

ARP: 49° 55' 37" N, 16° 11' 09" E
3 km SE Vysoké Mýto
ELEV: 988 ft / 301 m
Circuit: 2000 ft / 610 m AMSL



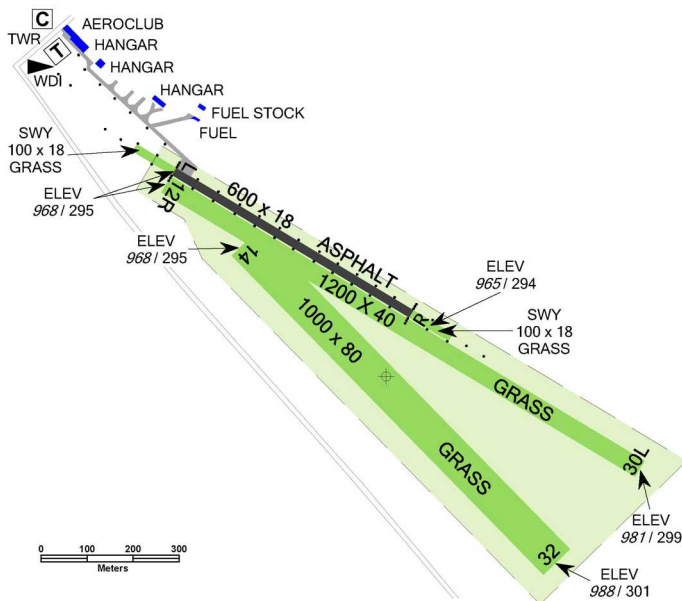
! The traffic circuit altitude is 2000 ft / 610 m AMSL.
Airspace above AD is a part of MTMA Pardubice.

LKVM Vysoké Mýto



Mýto RADIO
130,605

RWY	Magnetic direction	RWY dimensions	Strength	TORA	TODA	ASDA	LDA
12L	120°	600 x 18	PCN 5/F/B/Y/U	600	650	700	600
30R	300°	600 x 18	PCN 5/F/B/Y/U	600	650	700	600
12R	120°	1200 x 40	5700 / 0,7 MPa	1200	1260	1200	1200
30L	300°	1200 x 40	5700 / 0,7 MPa	1200	1260	1200	1200
14	135°	1000 x 80	5700 / 0,7 MPa	1000	1060	1000	1000
32	315°	1000 x 80	5700 / 0,7 MPa	1000	1060	1000	1000



15 APR - 15 OCT
SAT, SUN, HOL 0700 - 1400
otherwise O/R



aviation petrol 100 oct., Natural 95



Aeroshell 100, Aeroshell W100



O/R, limited



limited, 8 hours in advance O/R



20 persons - to book 24 HR in advance or hotels in the town Vysoké Mýto



20 persons - to book 24 HR in advance



taxi, bus, train, official car



Aeroklub Vysoké Mýto z.s.

letišťe Voštica 40, 566 01 Vysoké Mýto,

☎ +420 465 424 433, aeroklub.vm@wo.cz

Tomáš Charvát - head of air traffic ☎ +420 728 156 518

Michal Buryan - deputy of head of air traffic

☎ +420 606 165 923

Mýto RADIO ☎ +420 465 424 433, ☎ +420 724 217 210

Customs and immigration clearance: Border crossing
O/R, MON - FRI 24 HR in advance, SAT, SUN, HOL
48 HR in advance. Visa related services not available.

