


# LKVY Vyškov

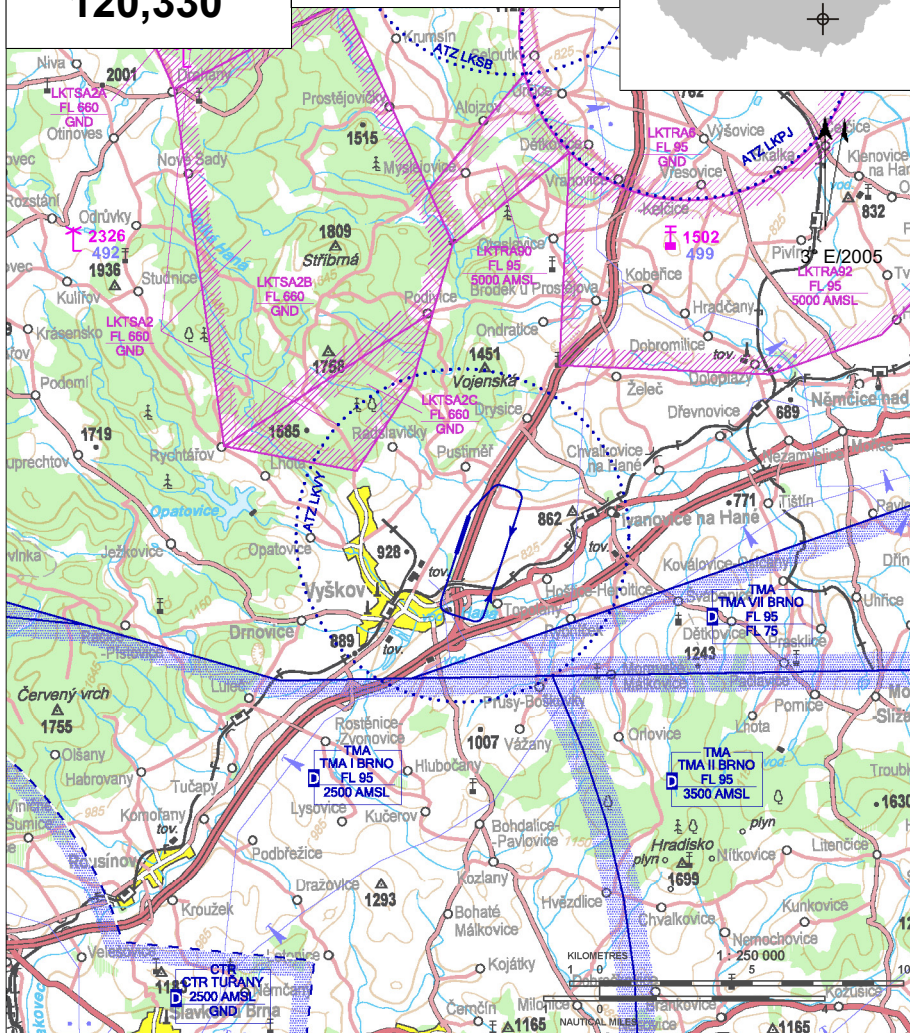
 Public domestic aerodrome

 VFR day



**Vyškov RADIO**  
**120,330**

**ARP: 49° 18' 01" N, 17° 01' 31" E**  
2,5 km NE Vyškov  
**ELEV: 915 ft / 279 m**  
**Circuit: 1700 ft / 518 m**



- Carry out the traffic circuits only to the east. Avoid the direct overflying of residential buildings.
- Avoid direct overflying of residential buildings of Pustiměř at departure from RWY 02.
- Avoid direct overflying of residential buildings of Vyškov at departure from RWY 20.

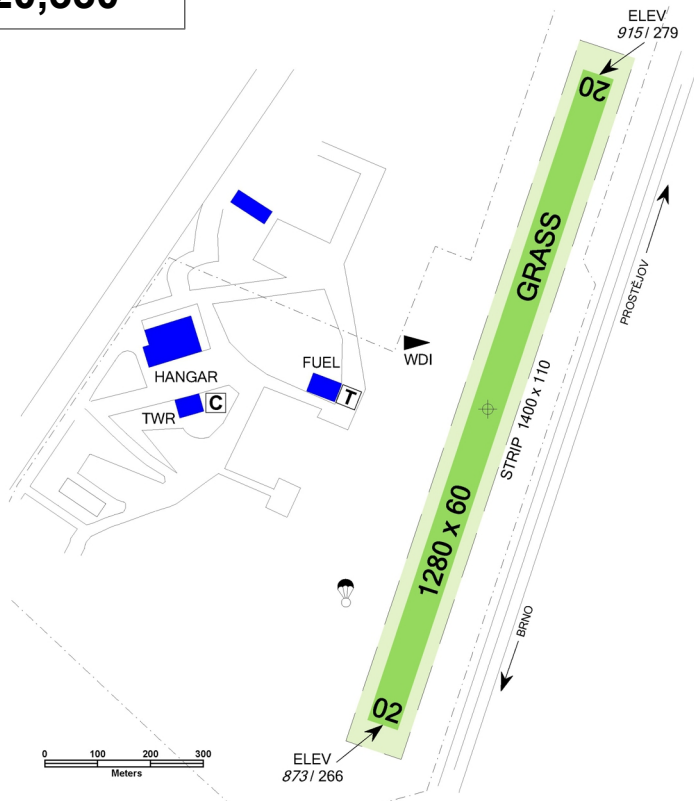


# LKVY Vyškov



**Vyškov RADIO**  
**120,330**

RWY	Magnetic direction	RWY dimensions	Strength	TORA	TODA	ASDA	LDA
02	017°	1280 x 60	5700 kg / 0.4 MPa	1280	1340	1280	1280
20	197°	1280 x 60	5700 kg / 0.4 MPa	1280	1340	1280	1280



15 APR - 15 OCT  
SAT, SUN, HOL 0800-1500  
otherwise O/R 24 HR in advance



gasoline Natural 95



AEROSHELL W120, AEROSHELL 15W50



O/R, limited



in limited range during operation



hotels in Vyškov



NIL



bus, train 3 km in Vyškov



## Aeroklub Vyškov, z.s.

Letiště Vyškov, č.p. 725, 682 01 Vyškov-  
Předměstí, ☎ +420 727 883 881,  
aeroklubvyskov@aeroklubvyskov.cz

Rostislav Verner (chairman of  
aeroklub) ☎ +420 608 327 460,  
rostislav.verner@aeroklubvyskov.cz

Michal Vrána (head of air traffic) ☎ +420 603 368 075,  
michal.vrana@aeroklubvyskov.cz

Fuel ☎ +420 775 731 655

Customs and immigration clearance: NIL

