

LKZA Zábřeh

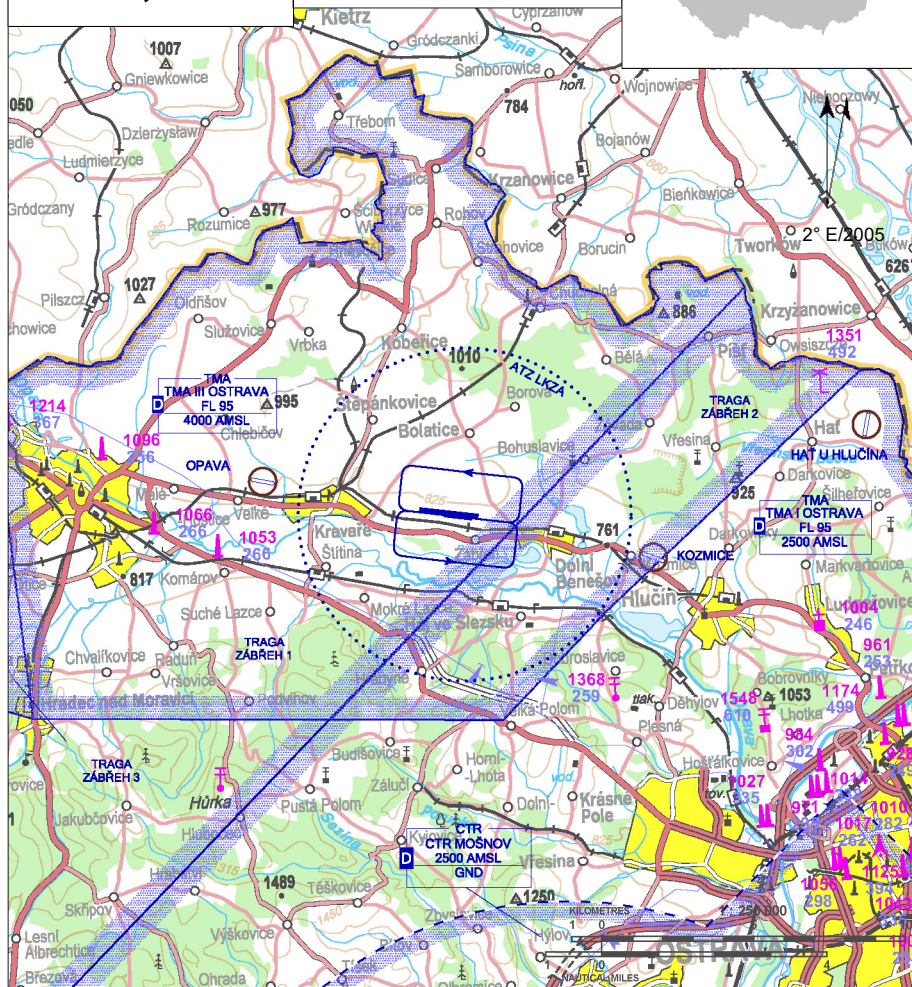
§ Public domestic aerodrome

✈ VFR day, parachute jumping operation



Zábřeh RADIO
123,605

ARP: 49° 55' 42" N, 18° 04' 42" E
12,5 km E Opava,
17,5 km NW Ostrava
ELEV: 794 ft / 242 m
Circuit: 1810 ft / 550 m



Aerodrome Traffic Zone (ATZ) is located under TMA Ostrava. ACC Praha clearance is required above 2500 ft AMSL.

CTR Mošnov is in the vicinity of AD, a clearance of TWR Mošnov is necessary for entry.

The vicinity of Polish border.

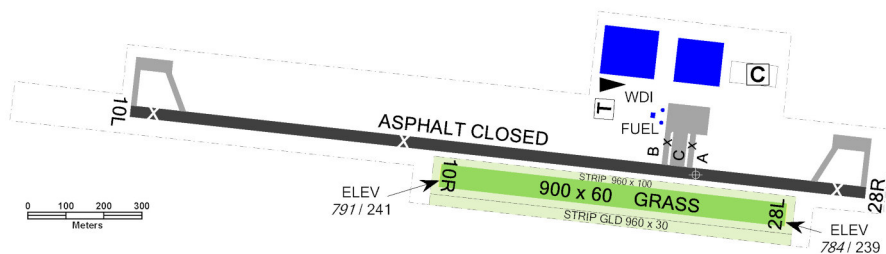


LKZA Zábřeh



Zábřeh RADIO
123,605

RWY	Magnetic direction	RWY dimensions	Strength	TORA	TODA	ASDA	LDA
10R	097°	900 x 60	5700 kg / 0.4 MPa	900	950	900	900
28L	277°	900 x 60	5700 kg / 0.4 MPa	900	950	900	900



15 APR - 15 OCT
SAT, SUN, HOL 0800 -1500
otherwise O/R



aviation petrol 100 oct.



TOTAL D-100



limited, O/R



MON - FRI 0800 - 1300 (Herbst Aero),
omezeně, O/R



limited - 15 persons, O/R 24 HR in advance



snack bar in AD operational hours,
otherwise restaurants in the town Dolní
Benešov



train - line Opava-Hlučín
bus, taxi - Opava, Ostrava



Slezský aeroklub Zábřeh, z.s.

P.O. Box 20, 747 22 Dolní Benešov,

+420 553 655 077, aeroklub@lkza.cz

Jaroslav Kolda (head of air traffic) +420 602 731 152

Customs and immigration clearance: NIL

Asphaltic-concrete RWY 28/10 is unserviceable.

Asphaltic-concrete TWYs A + B are unserviceable.

Taxi via TWY C.

