

LKJL - Jihlava - Základna HEMS

Private domestic heliport HEMS

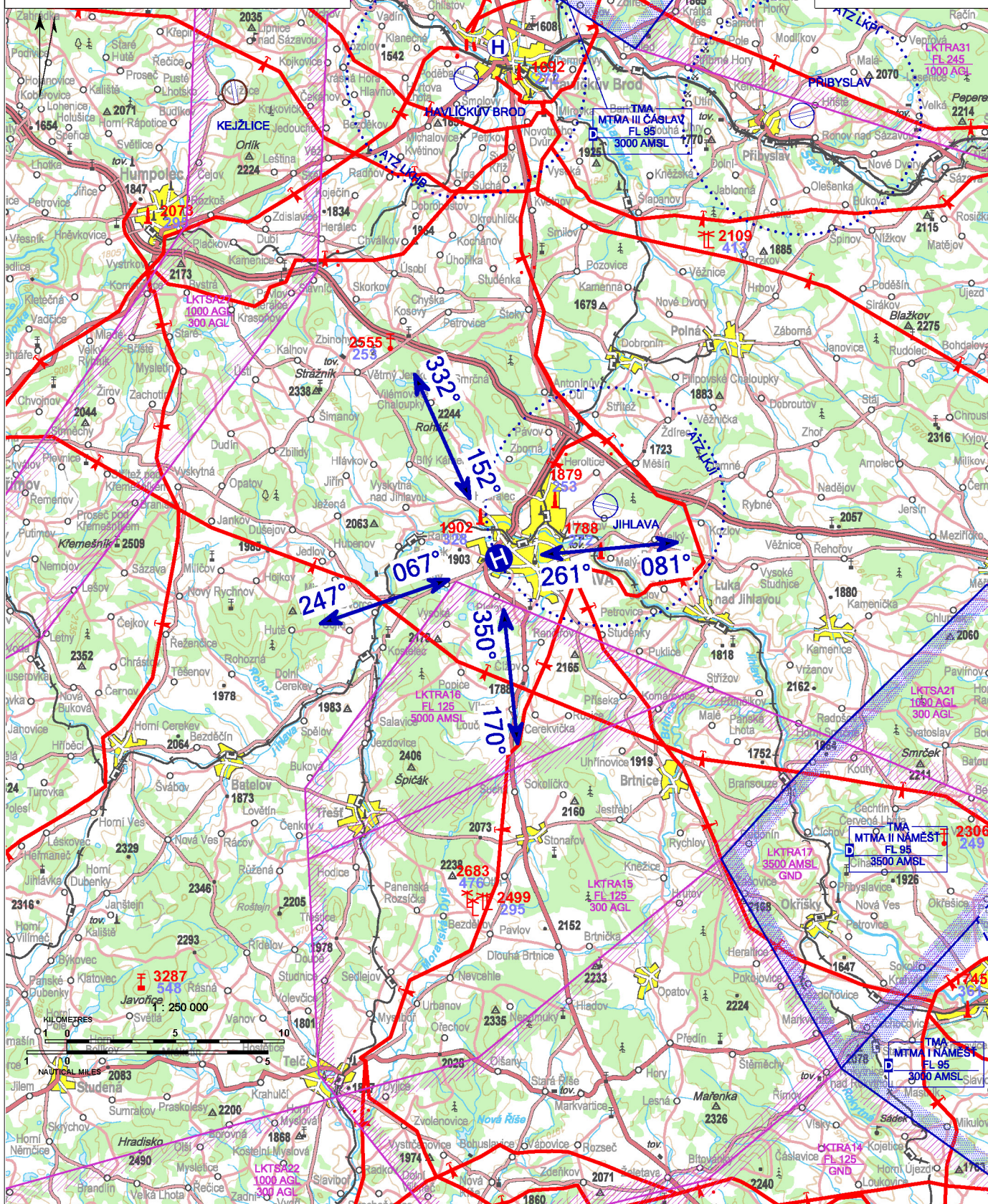
VFR day/night

49 23 54,70 N, 015 34 04,59 E POS: 1,7 km WNW Jihlava city center ELEV: 1752 ft / 534 m




Jihlava Heliport RÁDIO

123,480

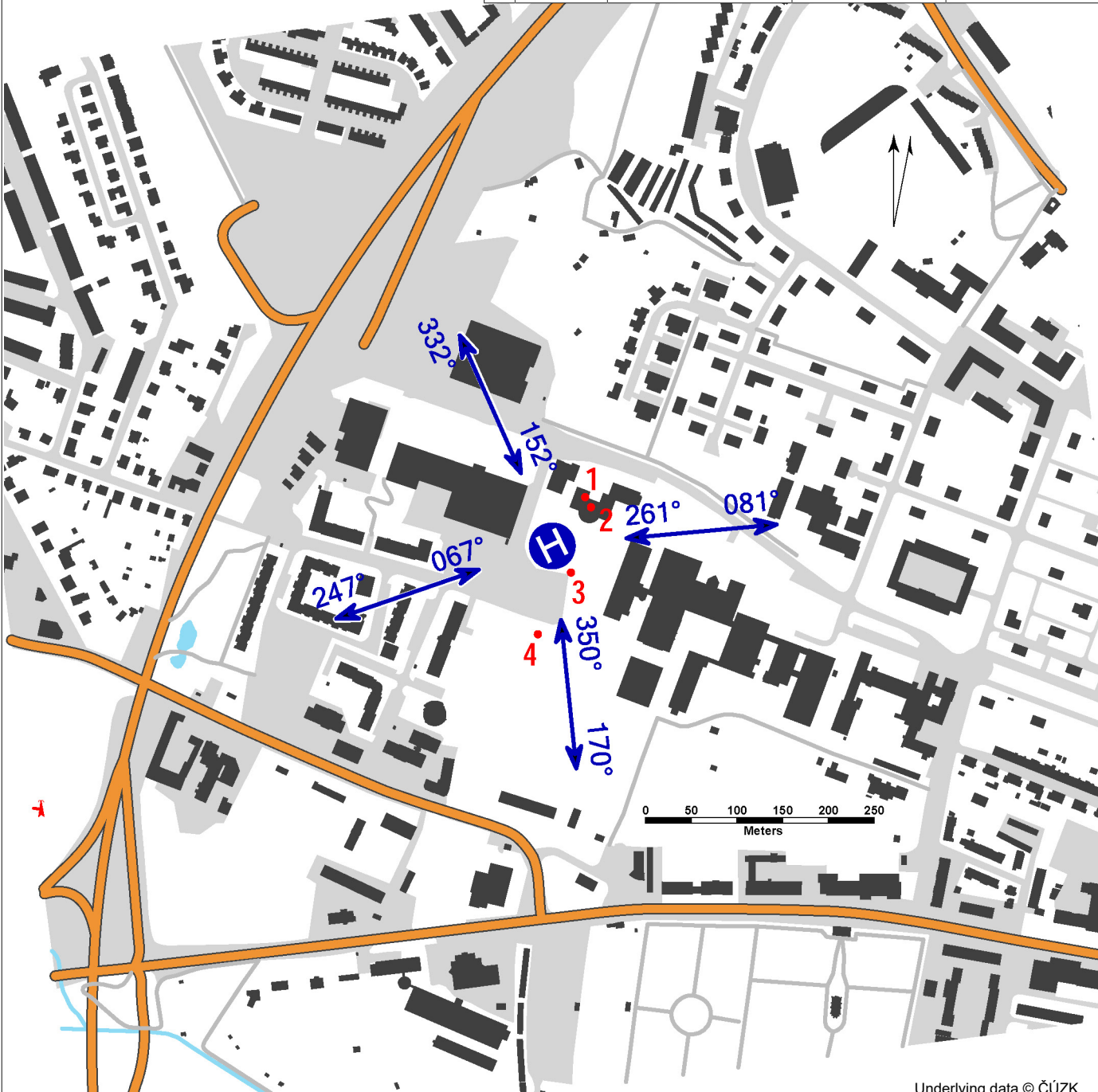


Only HEMS flights allowed.
 Descent gradient 1000 ft/1 NM.
 Heliport lighting system control - remotely from the helicopter deck to light everything up (except flash beacon),
 FREQ 135,460 MHZ (3 x 10 %, 5 x 30 %, 7 x 100 %), lights turn off automatically after 15 minutes.

LKJL - Jihlava - Základna HEMS


 **Jihlava Heliport**
RÁDIO **123,480**

| | | | |
|--|----------|--|----------------------------------|
| surface-level HEMS heliport value „D“ - 17 m (limitedly 19 m) FATO – circle diameter 26 m, grass SA – circle diameter 44 m, grass TLOF – square 15 x 15 m, asphalt-concrete, strength 6400 kg / 0,4 MPa Stand – rectangle 10 x 8 m, bitumen, strength 3500 kg / 0,4 MPa | | WDI (40 m SSE) FATO: perimeter markings/lighting FATO, designation markings TLOF: perimeter markings/lighting TLOF Stání: marking TDPM A-PAPI: 9,3° ALS: shortened, length 25 m Heliport beacon | |
| 1 | building | 49 23 56,36 N 015 34 06,39 E | 1817 ft / 554 m NIL |
| 2 | antenna | 49 23 56,00 N 015 34 06,71 E | 1827 ft / 557 m NIL |
| 3 | WDI | 49 23 53,69 N 015 34 05,59 E | 1752 ft / 534 m night marking |
| 4 | tree | 49 23 51,51 N 015 34 03,77 E | 1795 ft / 547 m NIL |







Underlying data © ČÚZK

| | Approach: | Take-offs: |
|------------------|------------------------|------------------------|
| VFR day | 152°, 261°, 350°, 067° | 332°, 081°, 170°, 247° |
| VFR night | 152° | 170°, 332° |

 **Zdravotnická záchraná služba Kraje Vysočina, příspěvková organizace**
Vrchlického 4843/61, 586 01 Jihlava,
☎ +420 567 567 245

Martin Žák (responsible person of operator)
☎ +420 606 666 579, zak@zssvysočina.cz

| |
|---|
|  HX |
|  JET A1 (upon agreement) |
|  Aero Shell 500 and 555 (upon agreement) |
|  NIL |
| Rescue and fire service: Cat H1 |