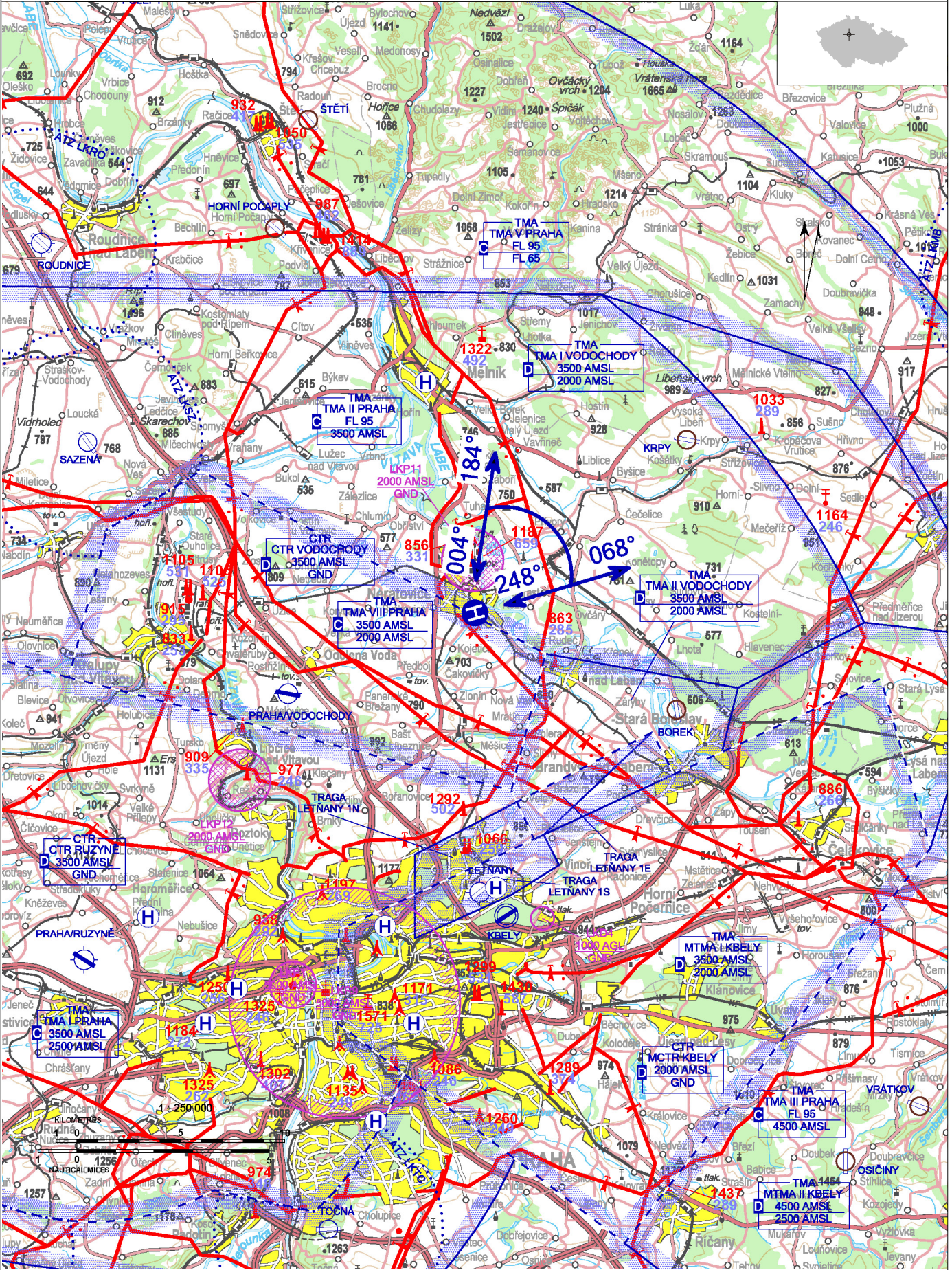


LKNR - Neratovice

Private domestic heliport HEMS

VFR day

50 15 09,46 N, 014 31 16,39 E POS: 0,8 km S Neratovice city center ELEV: 558 ft / 170 m



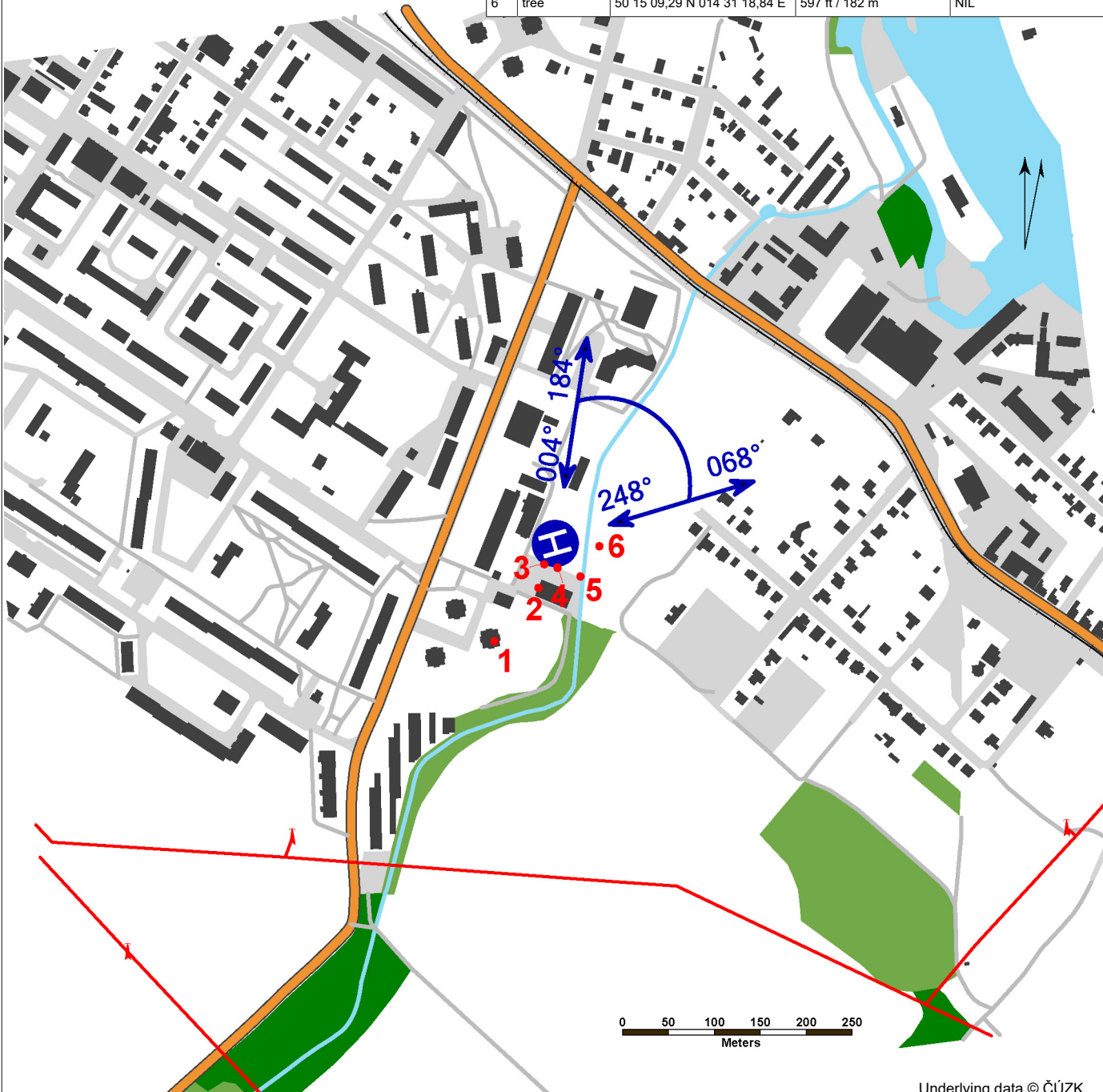
! Only HEMS flights allowed.

LKNR - Neratovice

surface-level HEMS heliport
 value „D“ - 17 m
 FATO – square 26 x 26 m, grass
 SA – square 44 x 44 m, grass
 TLOF – square 10 x 10 m, bitumen, strength 3500 kg / 0,4 MPa

WDI (30 m ENE)
 FATO: perimeter markings FATO, designation markings
 TLOF: perimeter markings TLOF

1	building	50 15 05,91 N 014 31 13,10 E	722 ft / 220 m	NIL
2	warehouse	50 15 07,81 N 014 31 15,50 E	594 ft / 181 m	NIL
3	tree	50 15 08,66 N 014 31 15,82 E	607 ft / 185 m	NIL
4	tree	50 15 08,53 N 014 31 16,55 E	587 ft / 179 m	NIL
5	tree	50 15 08,22 N 014 31 17,81 E	620 ft / 189 m	NIL
6	tree	50 15 09,29 N 014 31 18,84 E	597 ft / 182 m	NIL



Underlying data © ČÚZK

	Approach:	Take-offs:
VFR day	, from 004° to 248° NIL	, from 068° to 184° NIL
VFR night	NIL	NIL

Město Neratovice
 Kojetická 1028, 277 11 Neratovice
 Lenka Hrodková (responsible person of operator) ☎ +420 315 650 328, lenka.hrodkova@neratovice.cz
 PBX ☎ +420 315 682 741

- 🕒 HX
- 📶 NIL
- 📶 NIL
- 📶 NIL
- 🚒 Rescue and fire service: NIL