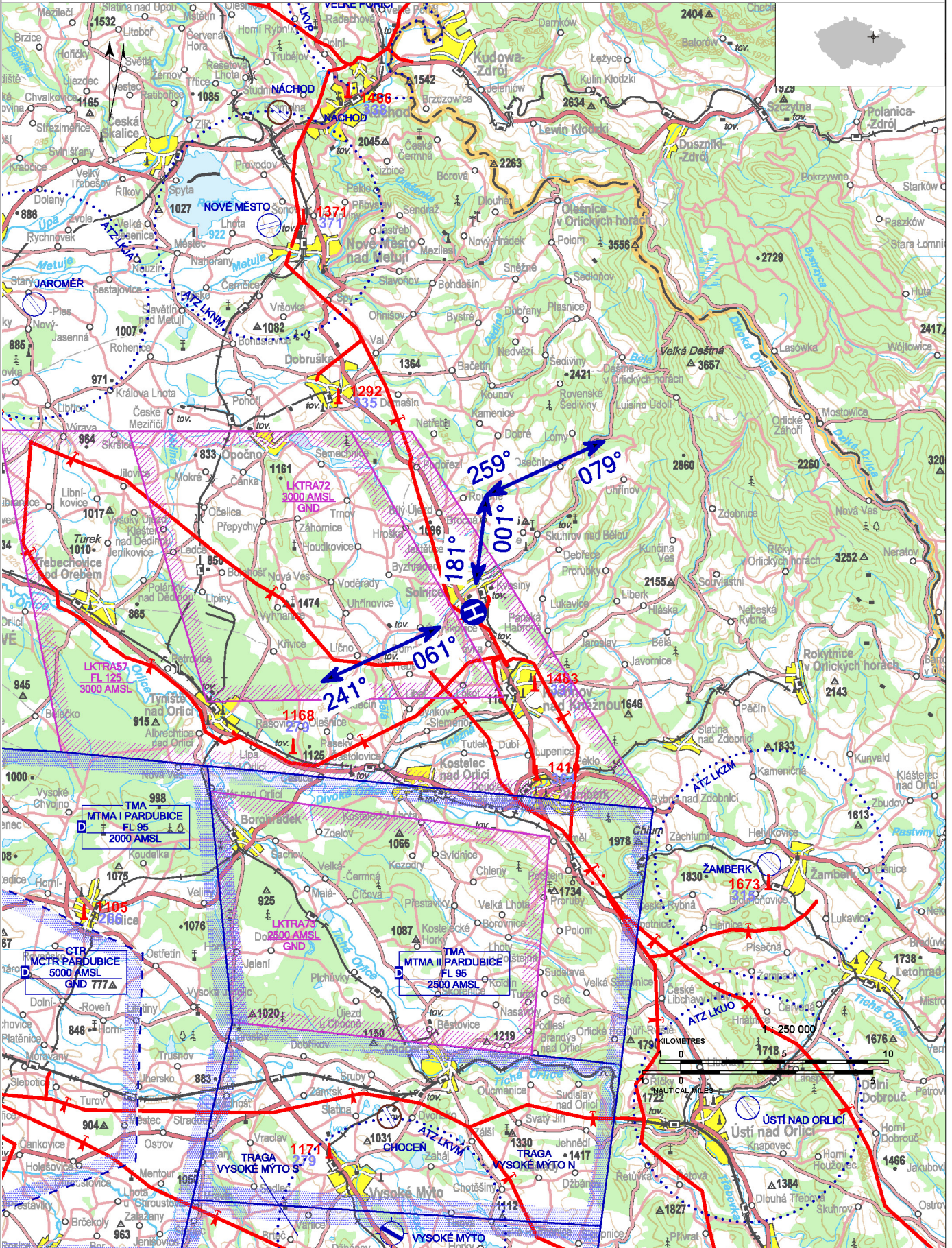


LKSL - Solnice - ACL

Private domestic heliport

VFR day

50 11 43,43 N, 016 14 52,69 E POS: 1,2 km SW Solnice ELEV: 1112 ft / 339 m



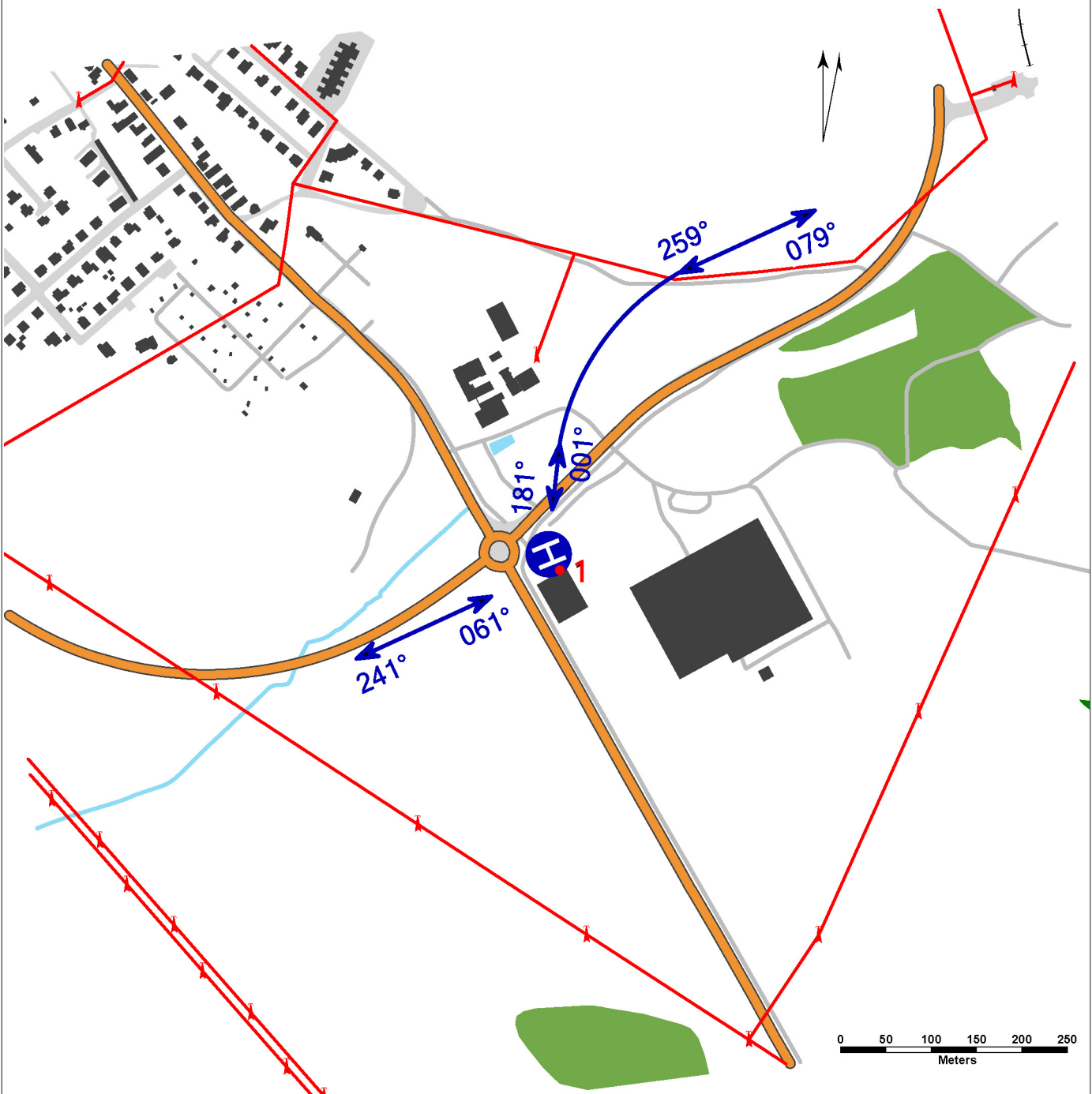
Approaches in direction 18 are performed in direction 259° in the first phase with following left turn with radius 270 m to the direction 181° in the second phase. Take-offs in direction 36 are performed in direction 001° in the first phase with following right turn with radius 270 m to the direction 079° in the second phase. Usage subject to the operator's approval.

LKSL - Solnice - ACL

elevated heliport
 value „D” - 13 m
 FATO - circle diameter 19,5 m, concrete, strength
 3500 kg / 0,4 MPa
 SA - circle diameter 26 m
 TLOF - circle diameter 19,5 m, concrete, strength
 3500 kg / 0,4 MPa

WDI (50 m SW) FATO: poznávací značení TLOF:
 obvodové značení TLOF

1	warehouse	50 11 42,80 N 016 14 53,28 E	1129 ft / 344 m	day marking
---	-----------	------------------------------	-----------------	-------------



Underlying data © ČÚZK

	Approach:	Take-offs:
VFR day	061°, 259°/181°	241°, 001°/079°
VFR night	NIL	NIL

- HX
- NIL
- NIL
- NIL

Rescue and fire service: Cat H1

ACL Technology s.r.o.
 Heyrovského 612, 463 12 Liberec
 XXIII - Doubí, ☎ +420 739 244 392,
 acl@acl-automotive.com
 Ing. Vladimír Böhm (responsible person of operator)
 ☎ +420 739 244 391, v.bohm@acl-automotive.com