

LKMT OSTRAVA/Mošnov

ARP: 49° 41' 46" N, 18° 06' 39" E
 20 km SW Main railway station in Ostrava
 ELEV: 844 ft / 257 m

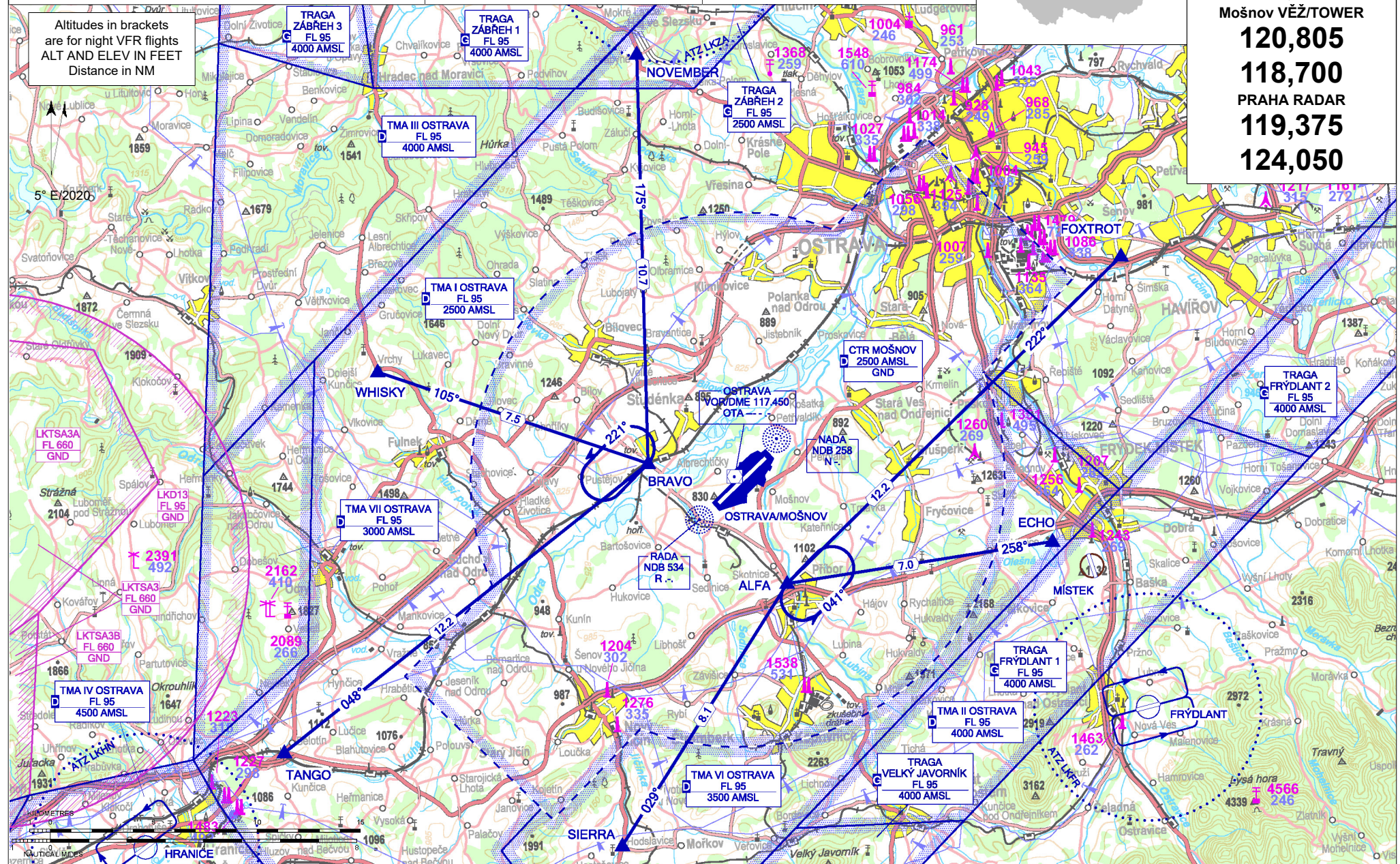


Mošnov ATIS
118,055
 Mošnov VĚŽ/TOWER
120,805
118,700
 PRAHA RADAR
119,375
124,050

S Public international aerodrome

X IFR, VFR

Altitudes in brackets are for night VFR flights
 ALT AND ELEV IN FEET
 Distance in NM



DESIGNATION	LOCATION	COORDINATES	
ALFA	Příbor	49° 39' 00" N 018° 08' 28" E	Holding
BRAVO	Studénka (railway overpass)	49° 42' 17" N 018° 03' 04" E	Holding
ECHO	Frýdek Místek (dam)	49° 39' 48" N 018° 19' 13" E	Entry
FOXTROT	Šenov (church)	49° 47' 10" N 018° 22' 29" E	Entry
NOVEMBER	Hrabyně	49° 52' 59" N 018° 03' 17" E	Entry
SIERRA	Hodslavice	49° 32' 20" N 018° 01' 25" E	Entry
TANGO	Bělotín	49° 35' 06" N 017° 47' 59" E	Entry
WHISKY	Vrchy (church)	49° 44' 57" N 017° 52' 19" E	Entry

ARRIVAL ROUTES	WAYPOINT SEQUENCE
NOVEMBER 1	NOVEMBER - BRAVO
FOXTROT 1	FOXTROT - ALFA
ECHO 1	ECHO - ALFA
SIERRA 1	SIERRA - ALFA
TANGO 1	TANGO - BRAVO
WHISKY 1	WHISKY - BRAVO
DEPARTURE ROUTES	WAYPOINT SEQUENCE
NOVEMBER 1	BRAVO - NOVEMBER
FOXTROT 1	ALFA - FOXTROT
ECHO 1	ALFA - ECHO
SIERRA 1	ALFA - SIERRA
TANGO 1	BRAVO - TANGO
WHISKY 1	BRAVO - WHISKY

Intentionally left blank