

LKPO Přerov

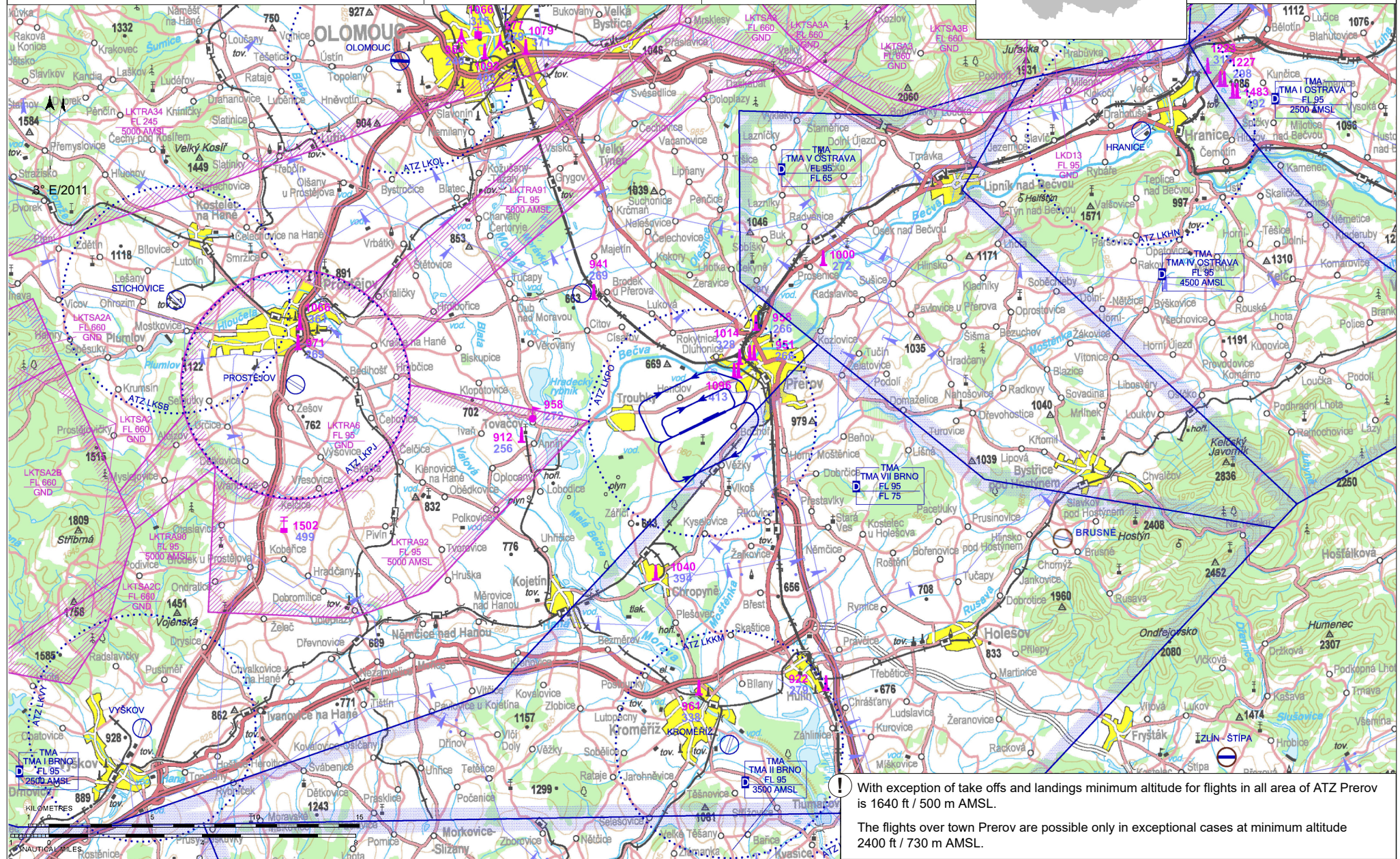
ARP: 49° 25' 33" N, 17° 24' 17" E
 4,5 km SW from the centre of town
ELEV: 676 ft / 206 m
Circuit: 1640 ft / 500 m AMSL



PRĚROV RADIO
127,780

S Public domestic aerodrome / Private international aerodrome

X VFR day, VFR night (only for helicopters)



! With exception of take offs and landings minimum altitude for flights in all area of ATZ Přerov is 1640 ft / 500 m AMSL.
 The flights over town Přerov are possible only in exceptional cases at minimum altitude 2400 ft / 730 m AMSL.

LKPO Přerov

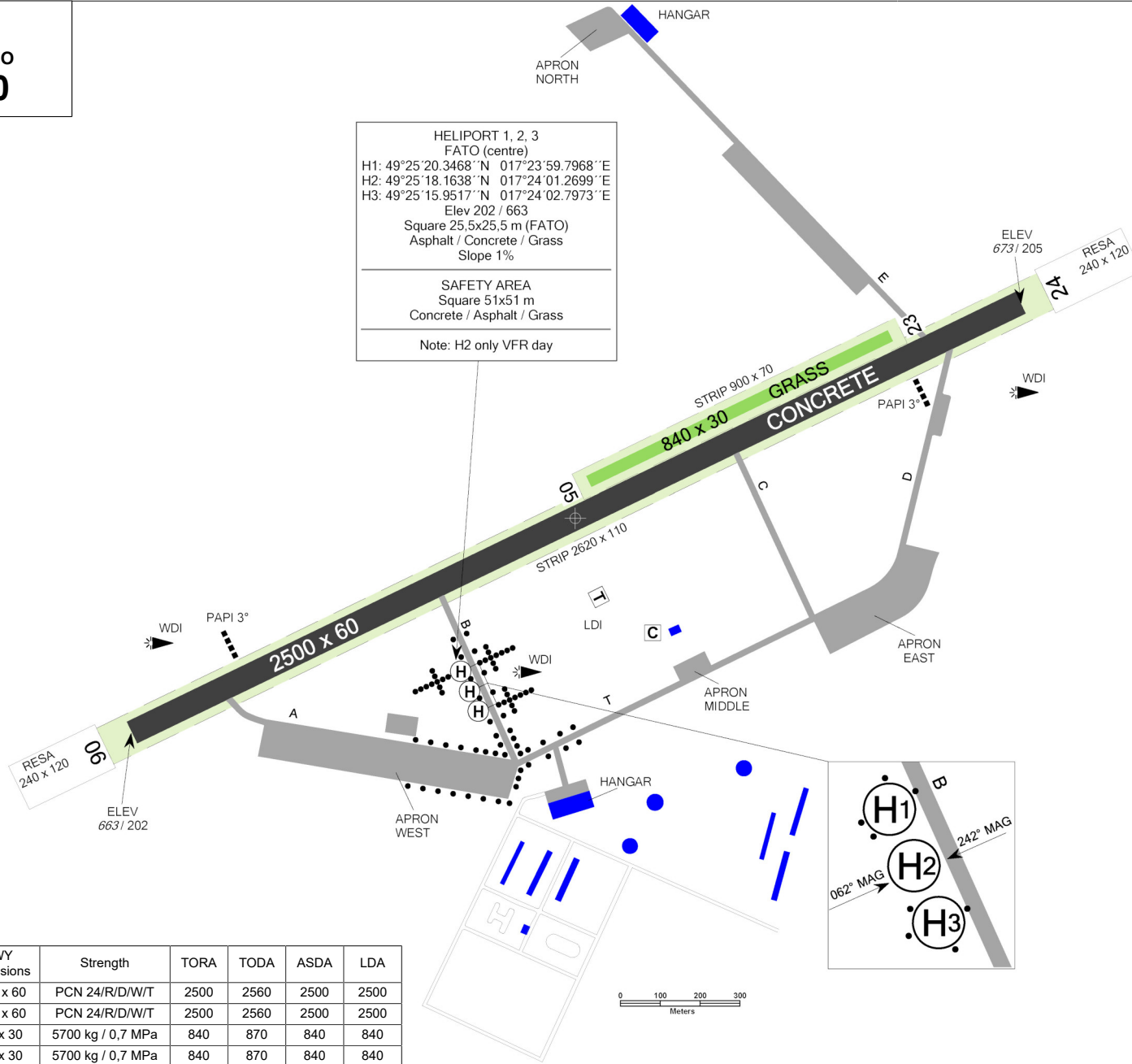


PŘEROV RADIO
127,780

HELIPORT 1, 2, 3
FATO (centre)
H1: 49°25'20.3468" N 017°23'59.7968" E
H2: 49°25'18.1638" N 017°24'01.2699" E
H3: 49°25'15.9517" N 017°24'02.7973" E
Elev 202 / 663
Square 25,5x25,5 m (FATO)
Asphalt / Concrete / Grass
Slope 1%

SAFETY AREA
Square 51x51 m
Concrete / Asphalt / Grass

Note: H2 only VFR day



RWY	Magnetic direction	RWY dimensions	Strength	TORA	TODA	ASDA	LDA
06	062°	2500 x 60	PCN 24/R/D/W/T	2500	2560	2500	2500
24	242°	2500 x 60	PCN 24/R/D/W/T	2500	2560	2500	2500
05	062°	840 x 30	5700 kg / 0,7 MPa	840	870	840	840
23	242°	840 x 30	5700 kg / 0,7 MPa	840	870	840	840

LOM PRAHA s.p.
letišťe Přerov, Na Letišti 406/147,
750 02 Bochoř

RADIO unit - ☎ +420 580 580 160 *,
☎ +420 702 206 754 *,
provoz.lkpo@lompraha.cz (* only in
operational hours)
Ing. Monika Vaculíková (head for civil
aviation) - ☎ +420 702 209 592,
monika.vaculikova@lompraha.cz

🕒 1 APR - 31 MAY: 0700-1600 UTC,
1 JUN - 30 SEP: 0800-1700 UTC,
1 OCT - 31 OCT: 0700-1600 UTC,
otherwise O/R 24 HR in advance.
In case of arrivals/departures outside of the
Schengen Area 48 HR O/R SAT, SUN, HOL.

🛢️ JET A-1 (NATO F-34), AVGAS LL 100,
outside of operational hours on request 24
HR in advance

🛢️ Shell W100, Shell mineral, Aeroshell 100,
W15W50, TOTAL 100, D100

🛢️ limited

✈️ L-410, L-200, Z-42, Z-43, Z-142, Z-143,
Z-242, Z-126 to Z-726, ZLIN 50 series,
Bucker Bu 131/Aero C-104/C.A.S.A. 1.131./
T-131PA, Bucker Bu 133/T-133PA, Bucker
Bu 181/Z 181/Z 281/Z 381, CESSNA Single
Engine Piston Series, CIRRUS SR20, SR22,
SR22T, Pilatus P-2-05/06, XtremeAir XA41
and XA42, on request 24HR in advance

🏨 Hotels Přerov, Olomouc, Prostějov, Zlín

🏘️ Towns Přerov, Olomouc

🚗 Taxi

Customs and immigration clearance:
Customs clearance: On written request 24
HR in advance. Immigration clearance: On
written request 24 HR in advance, 48 HR in
advance in case of SAT, SUN, HOL.

Parallel operation (simultaneous take-off or
landing) on RWY 06/24 (concrete) and RWY
05/23 (grass) is not allowed.