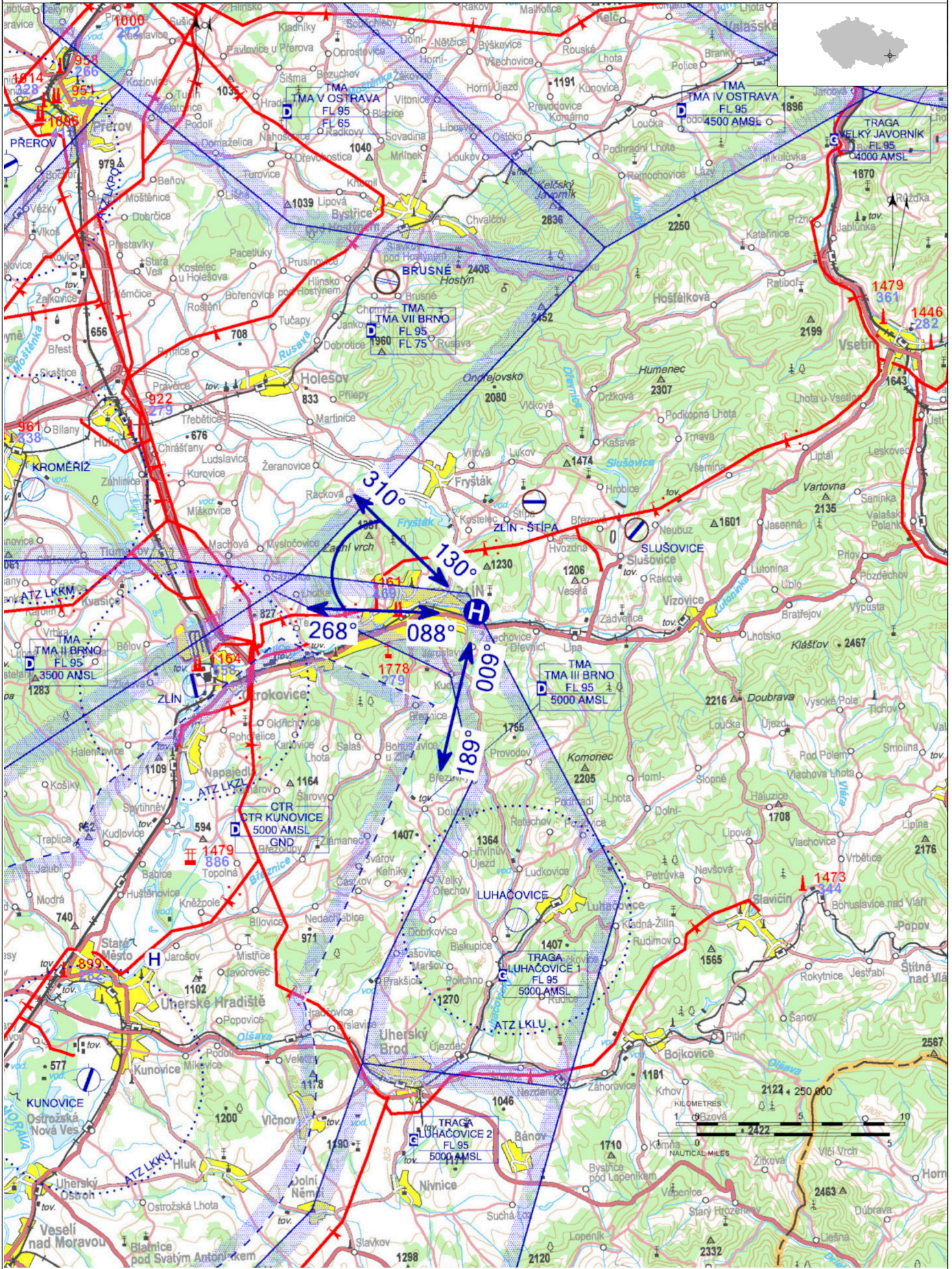


LKZI - Zlín - Nemocnice

Private domestic heliport HEMS

VFR day

49 13 34,19 N, 017 42 18,51 E POS: 2,8 km E Zlín city center ELEV: 738 ft / 224 m

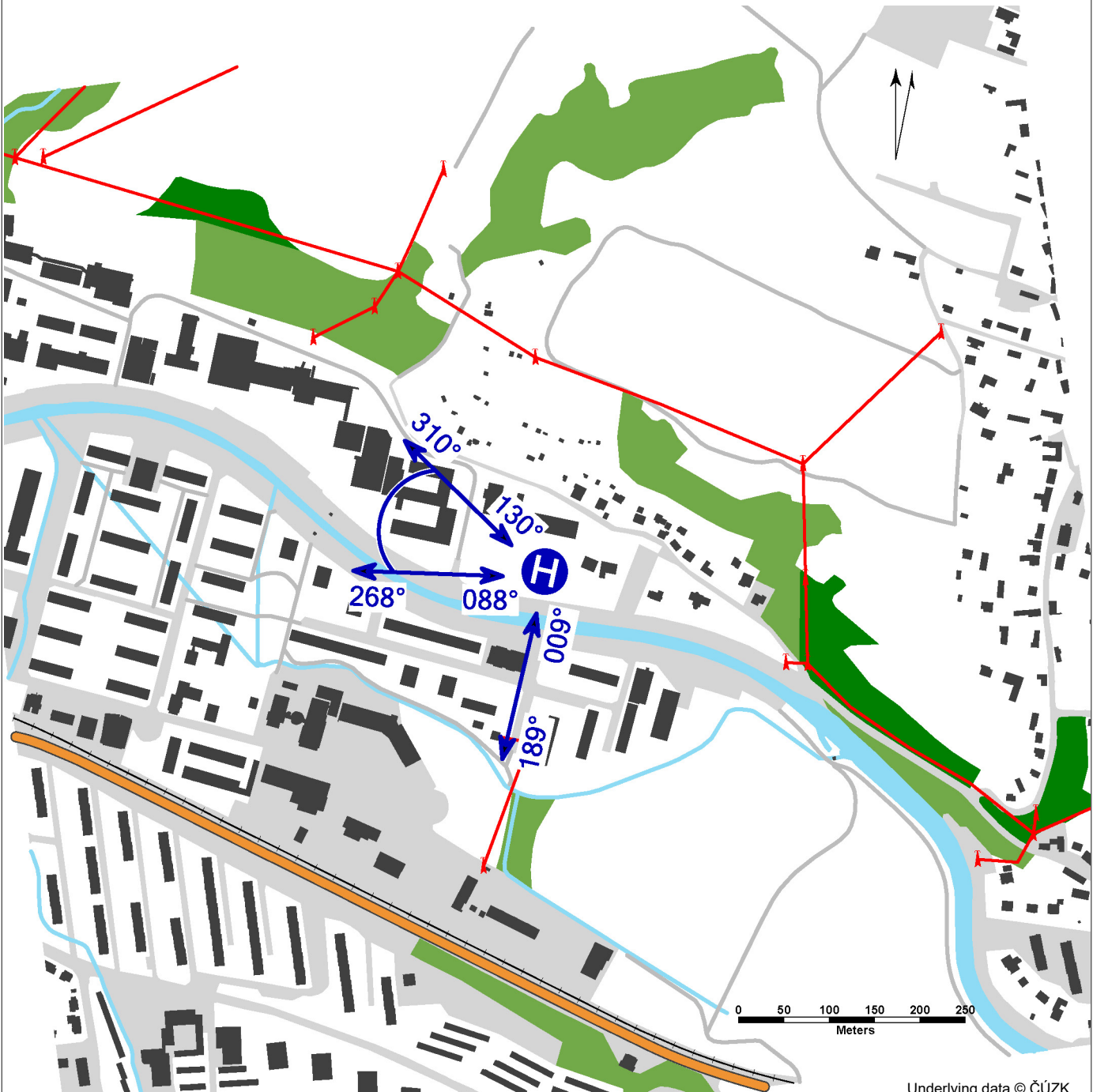


! Only HEMS flights allowed.

LKZI - Zlín - Nemocnice

surface-level HEMS heliport
 value „D“ - 17 m (limitedly 19 m)
 FATO – square 26 x 26 m, grass
 SA – circle square 44 x 44 m, grass
 TLOF – circle square 10 x 10 m, concrete, strength
 12000 kg / 0,55 MPa





WDI (60 m NNE)
 FATO: perimeter marking FATO, designation
 marking
 TLOF: perimeter marking TLOF



Underlying data © ČÚZK

	Approach:	Take-offs:
VFR day	009°, from 088° to 130°	189°, from 268° to 310°
VFR night	NIL	NIL

 **Krajská nemocnice T. Bati, a. s.**
 Havlíčkovo nábřeží 600, 760 01 Zlín
 Mgr. Rudolf Ferenc (responsible person
 of the operator) ☎ +420 703 464 972,
 rudolf.ferenc@bnzlin.cz
 PBX ☎ +420 577 551 111

-  HX
-  NIL
-  NIL
-  NIL
- Rescue and fire service: NIL