

LKKL Kladno

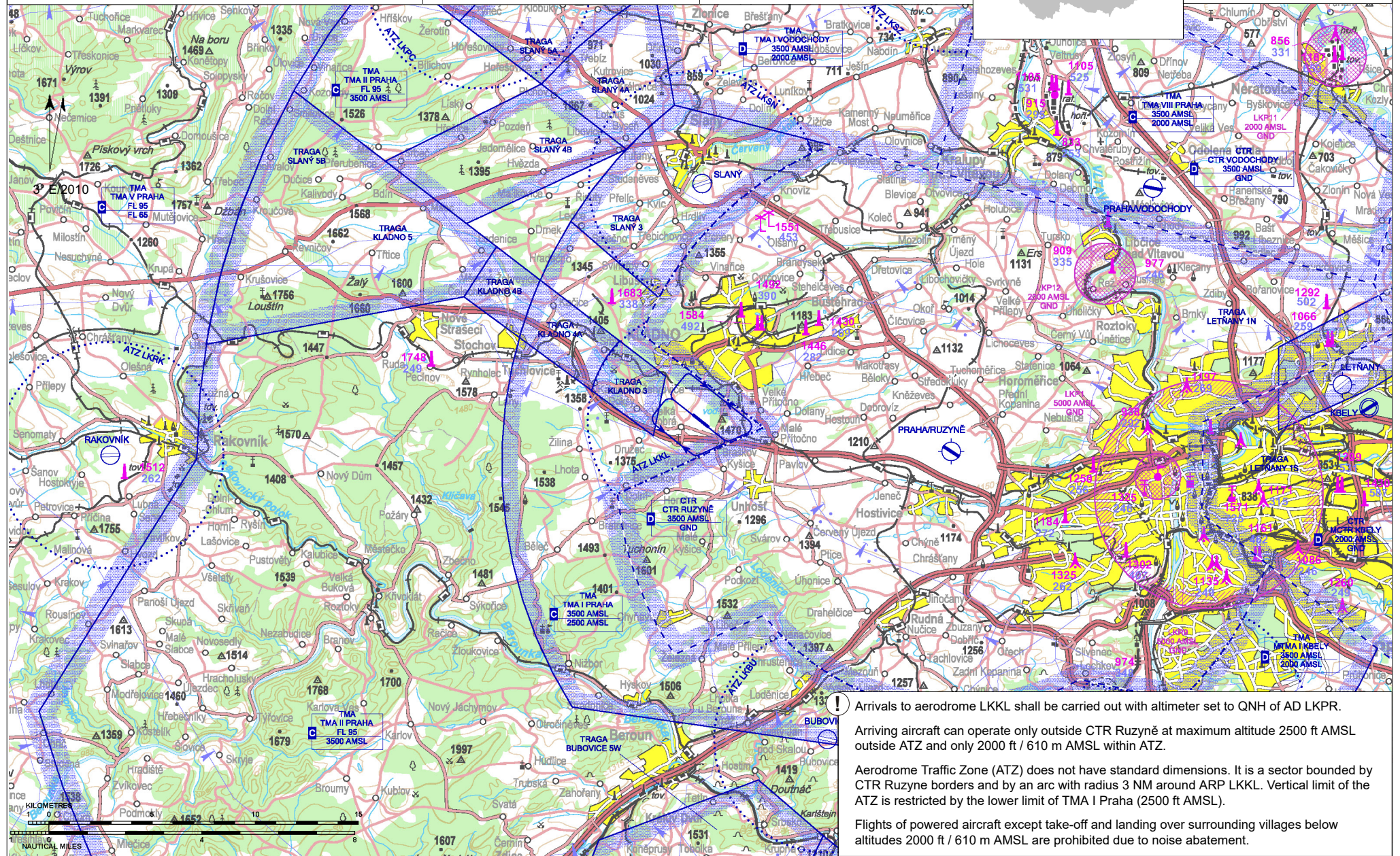
ARP: 50° 06' 46" N, 14° 05' 23" E
 4,2 km SW Kladno
 ELEV: 1419 ft / 433 m
 Circuit: 2000 ft / 610 m AMSL




Kladno RADIO
123,480

 Public domestic aerodrome

 VFR day/night



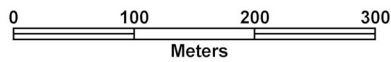
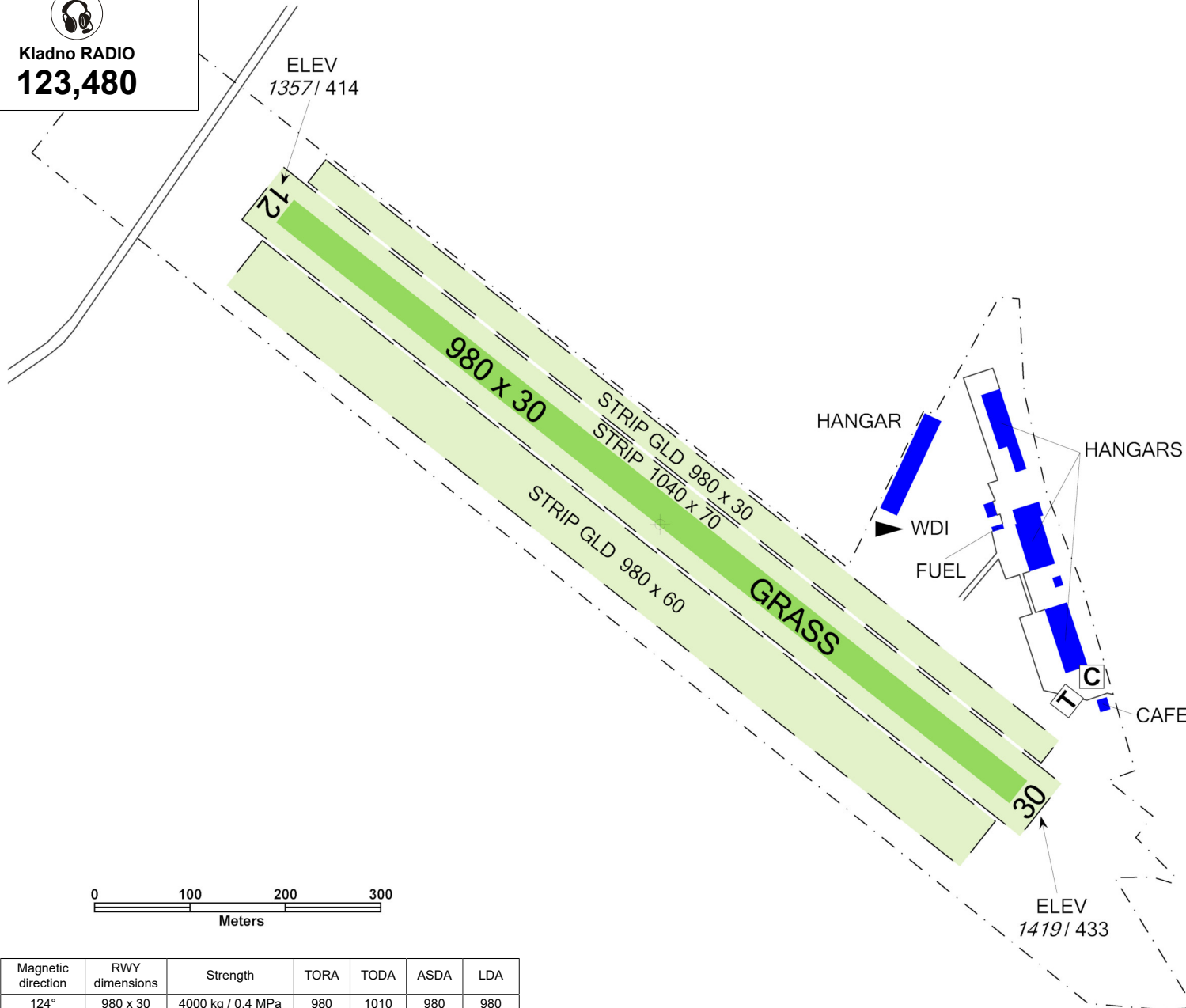
! Arrivals to aerodrome LKKL shall be carried out with altimeter set to QNH of AD LKPR.
 Arriving aircraft can operate only outside CTR Ruzyně at maximum altitude 2500 ft AMSL outside ATZ and only 2000 ft / 610 m AMSL within ATZ.
 Aerodrome Traffic Zone (ATZ) does not have standard dimensions. It is a sector bounded by CTR Ruzyně borders and by an arc with radius 3 NM around ARP LKKL. Vertical limit of the ATZ is restricted by the lower limit of TMA I Praha (2500 ft AMSL).
 Flights of powered aircraft except take-off and landing over surrounding villages below altitudes 2000 ft / 610 m AMSL are prohibited due to noise abatement.

LKKL Kladno



Kladno RADIO
123,480

ELEV
1357/ 414



RWY	Magnetic direction	RWY dimensions	Strength	TORA	TODA	ASDA	LDA
12	124°	980 x 30	4000 kg / 0.4 MPa	980	1010	980	980
30	304°	980 x 30	4000 kg / 0.4 MPa	980	1010	980	980



BLUE SKY AIRPORT s.r.o.

Letiště Kladno, Velká Dobrá
580, 273 61 Velká Dobrá,
☎ +420 737 225 558,
info@bsa-group.cz,
www.letiste-kladno.cz

Head of air traffic - ☎ +420 737 225 558
Kladno Handling - ☎ +420 736 150 777



15 APR - 15 OCT
SAT, SUN, HOL 0800-1500
otherwise O/R



aviation petrol AVGAS, JET A1 on request



Aeroshell, TOTAL



short-term hangar and parking of aircraft possible



AVIATEX s.r.o., CZ.CAO 003 (contractually)



Kladno, Praha



Velká Dobrá fast food, Kladno, Praha



possible transport to/from Prague subway

Customs and immigration clearance: NIL

Grass strips BRG 300/120 right and left of RWY 12/30 for glider operation are part of the aerodrome area.

Taxi only along RWY or according to instructions of service Providing information to known traffic.