

LKSK Skuteč

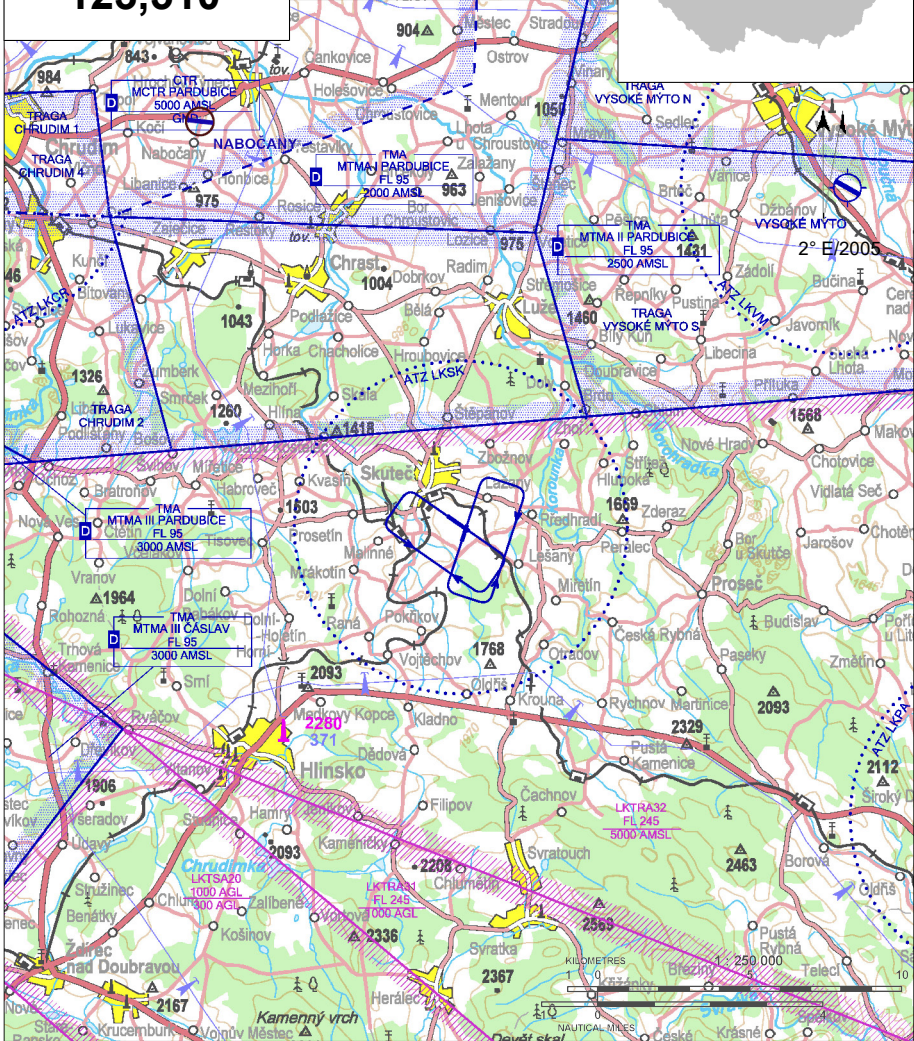
§ Public domestic aerodrome

✈ VFR day, parachute jumping operation



Skuteč RADIO
123,510

ARP: 49° 49' 40" N, 16° 00' 21" E
1,5 km SE Skuteč
ELEV: 1601 ft / 488 m
Circuit: 2590 ft / 789 m AMSL



! Avoid overflying of Skuteč town.

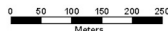
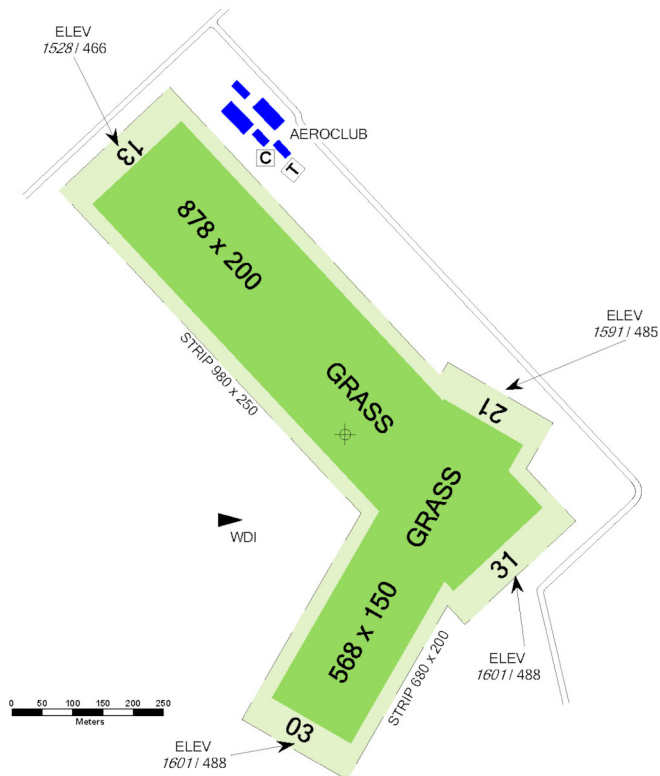
The north part of the aerodrome traffic zone (ATZ) is restricted by vertical and horizontal boundary of MTMA Pardubice.

LKSK Skuteč



Skuteč RADIO
123,510

RWY	Magnetic direction	RWY dimensions	Strength	TORA	TODA	ASDA	LDA
13	132°	878 x 200	5500 kg / 0.3 MPa	878	920	878	878
31	312°	878 x 200	5500 kg / 0.3 MPa	878	920	878	878
03	025°	568 x 150	5500 kg / 0.3 MPa	568	620	568	568
21	205°	568 x 150	5500 kg / 0.3 MPa	568	620	568	568



15 APR - 15 OCT
SAT, SUN, HOL 0800 - 1500
otherwise O/R



AVGAS 100LL, BA 95



ELF 100 AD



O/R, limited



NIL



Skuteč, O/R MAX 30 persons at the aerodrome



snack bar at the aerodrome



train, bus



Aeroklub Skuteč, z.s.

Letiště 1009, 539 73 Skuteč,

☎ +420 468 003 050, ak.skutec@seznam.cz

Ing. Jan Posejpal (chairman of aeroclub)

☎ +420 725 515 519

Radek Štěrba (head of air traffic) ☎ +420 603 899 504,

☎ +420 777 824 807, radek.sterba@americanway.cz

Customs and immigration clearance: NIL

RWY 13/31 is climbing in direction 130°. There is an approximate lengthwise slope 4,1% (superelevation 30 m) in the segment from THR to 540 m.

