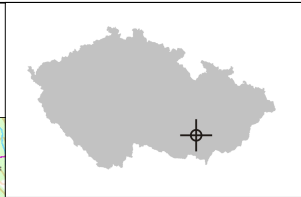



LKTB BRNO/Tuřany

ARP: 49° 09' 05" N, 16° 41' 38" E
125° GEO - 7,5 km Brno railway station
ELEV: 778 ft / 237 m

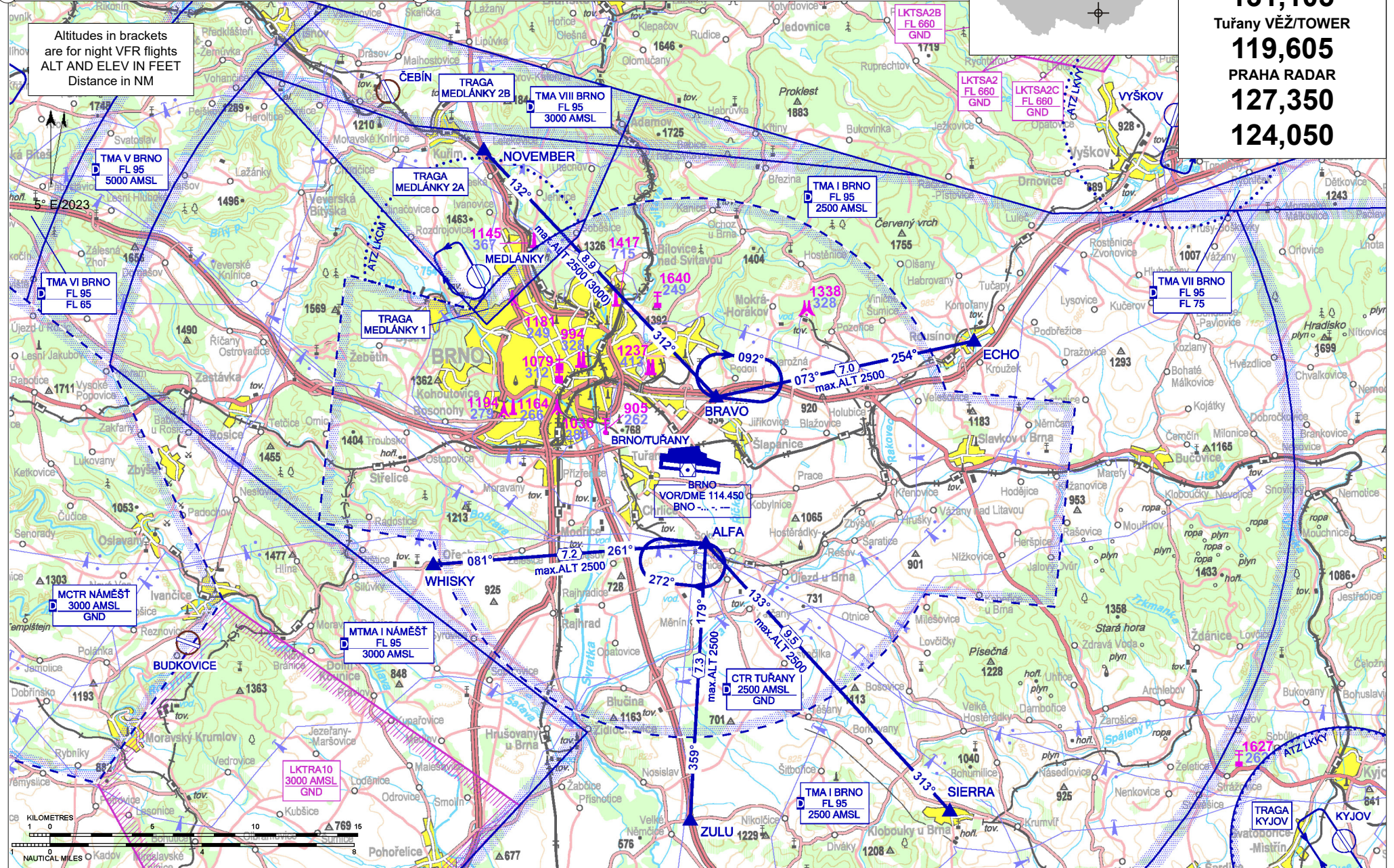



Tuřany ATIS
131,105
Tuřany VĚŽ/TOWER
119,605
PRAHA RADAR
127,350
124,050

 Public international aerodrome

 IFR, VFR

Altitudes in brackets
are for night VFR flights
ALT AND ELEV IN FEET
Distance in NM



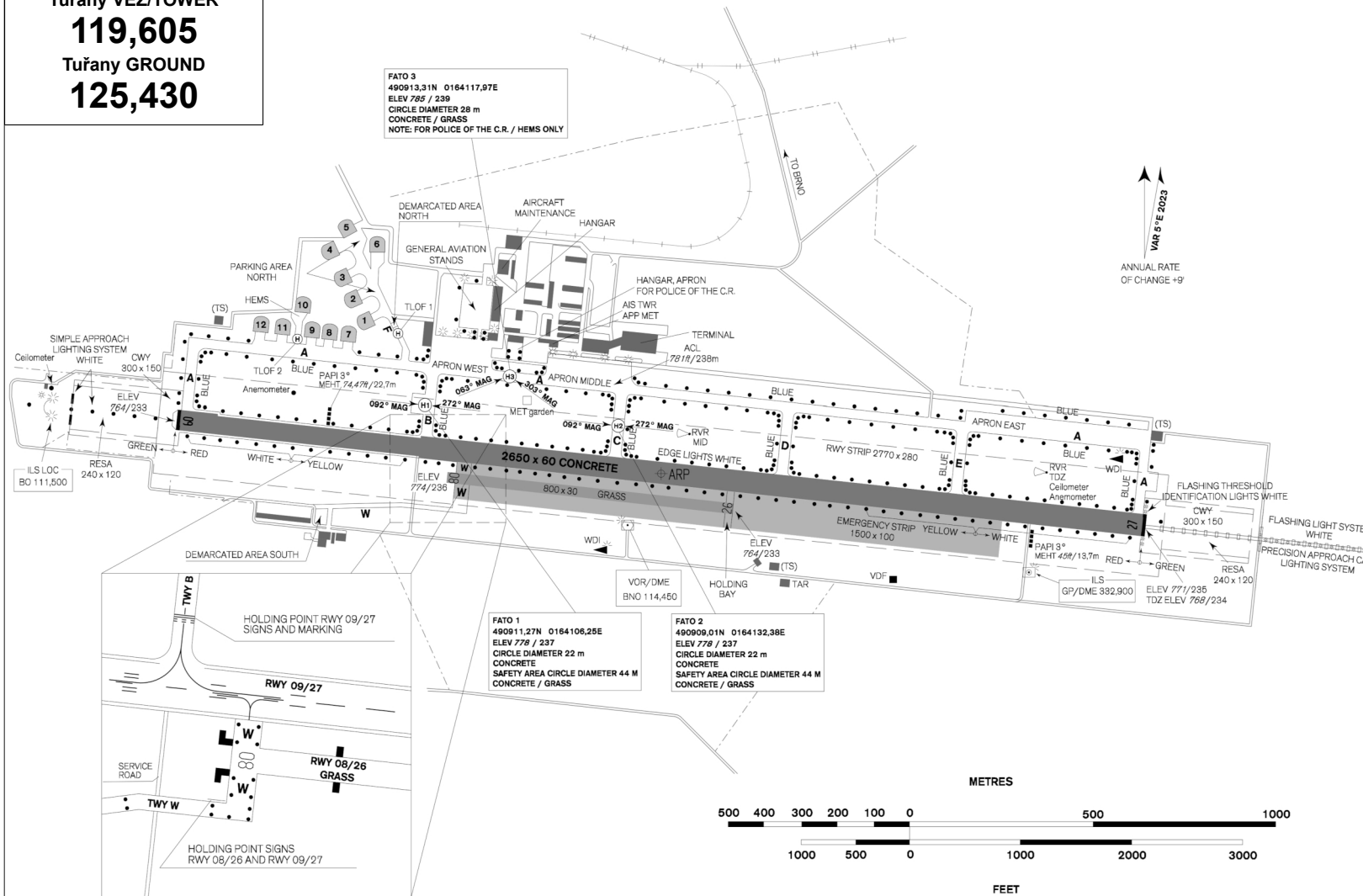
DESIGNATION	LOCATION	COORDINATES	
ALFA	Sokolnice (railway crossing)	49° 07' 03" N 016° 42' 12" E	Holding
BRAVO	Podolí (highway overpass)	49° 10' 54" N 016° 42' 45" E	Holding
ECHO	Rousínov (church)	49° 12' 13" N 016° 53' 10" E	Entry
NOVEMBER	Kuřim (railway crossing SE of town)	49° 17' 32" N 016° 33' 37" E	Entry
SIERRA	Klobouky u Brna	48° 59' 52" N 016° 51' 44" E	Entry
WHISKY	Ořechov (church)	49° 06' 39" N 016° 31' 15" E	Entry
ZULU	Velké Němčice intersection of the highway and minor road NE of the city	48° 59' 47" N 016° 41' 20" E	Entry

ARRIVAL ROUTES	WAYPOINT SEQUENCE
NOVEMBER 1	NOVEMBER - BRAVO
ECHO 1	ECHO - BRAVO
SIERRA 1	SIERRA - ALFA
WHISKY 1	WHISKY - ALFA
ZULU 1	ZULU - ALFA
DEPARTURE ROUTES	WAYPOINT SEQUENCE
NOVEMBER 1	BRAVO - NOVEMBER
ECHO 1	BRAVO - ECHO
SIERRA 1	ALFA - SIERRA
WHISKY 1	ALFA - WHISKY
ZULU 1	ALFA - ZULU

LKTB BRNO/Tuřany



Tuřany VĚŽ/TOWER
119,605
 Tuřany GROUND
125,430



LETISTE BRNO a.s.
 Letiště Brno - Tuřany 904/1, 627
 00 Brno, ☎ +420 545 521 111,
 ☎ +420 545 216 346,
 AFTN: LKTBYDYX, SITA: BRQCZ7X
 Handling agent at the airport Brno/Tuřany:
 LETIŠTĚ BRNO a.s. (for all
 flights) - ☎ +420 545 521 309,
 ☎ +420 545 521 310,
 ☎ +420 545 216 346,
 handling@airport-brno.cz,
 AFTN: LKTBYDYX, SITA: BRQCZ7X
 (FREQ: 131,805, call sign BRNO
 HANDLING)

- H24
- Jet A1, AVGAS 100 LL
- Not available
- Limited for GA aircraft - on request at the aerodrome operator
- Contact the airport operator for possibility of aircraft repairs.
- Hotels in the city - reservations available through the aerodrome operator.
- In the terminal building.
- Public transport, taxi, bus (shall be ordered in advance).

Customs and immigration clearance: H24

Taxiing from aprons to RWY 08/26 is led along concrete TWYs, RWY 09/27 and grassy TWYs. RWY 08/26 and grassy TWYs are located in the emergency strip south of RWY 09/27.

Aircraft after landing on the RWY 08/26, unless cleared to taxi, have to vacate RWY to the nearest marked holding bay or TWY W. Holding bay and TWY W are located south of RWY 08/26. Pilots have to report "RWY vacated" to TWR.

During taxiing to APN from RWY 08/26 the pilots have to ask for clearance to cross RWY 09/27.

During taxiing to RWY 08/26 the pilots have to stop on marked holding positions and ask for a clearance to cross RWY 09/27.

RWY	Magnetic direction	RWY dimensions	Strength	TORA	TODA	ASDA	LDA
09	092°	2650 x 60	PCN 48/R/A/X/T	2650	2950	2650	2650
27	272°	2650 x 60	PCN 48/R/A/X/T	2650	2950	2650	2650
08	092°	800 x 30	5700 kg / 1,5 MPa	800	860	800	800
26	272°	800 x 30	5700 kg / 1,5 MPa	800	860	800	800

Intentionally left blank