

LKVL Vlašim

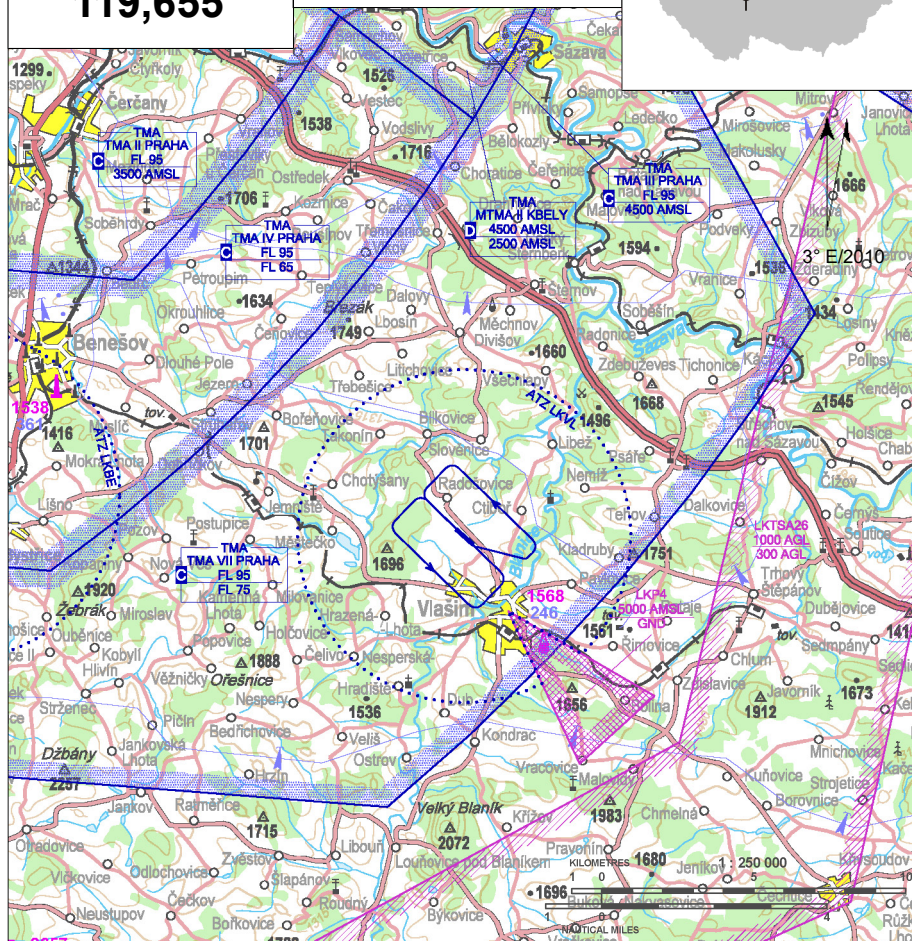
§ Public domestic aerodrome

✈ VFR day



Vlašim RADIO
119,655

ARP: 49° 43' 44" N, 14° 52' 44" E
2,5 km NW Vlašim
ELEV: 1421 ft / 433 m
Circuit: 2430 ft / 740 m AMSL



Part of prohibited area LKP4 is situated in ATZ.

Noise abatement procedures

- Flights of powered aircraft above surrounding villages are prohibited under 2430 ft/740 m AMSL due to noise abatement.
- Executing of aerobatics by powered aeroplanes in ATZ is prohibited.
- After take off from RWY 13 turn left 30° from RWY direction to avoid overflying built-up areas of town Vlašim.



LKVL Vlašim



Vlašim RADIO
119,655

RWY	Magnetic direction	RWY dimensions	Strength	TORA	TODA	ASDA	LDA
13	132°	850 x 40	5700 kg / 0.4 MPa	850	880	850	850
31	312°	850 x 40	5700 kg / 0.4 MPa	850	880	850	850



15 APR - 15 OCT
SAT, SUN, HOL 0700 - 1400
otherwise O/R



Natural BA95, Avgas 100 LL; limited



Aeroshell 100/100W



O/R, limited



O/R, limited



NIL



NIL



4,6 km bus and train station Vlašim



Město Vlašim

Jana Masaryka 302, 258 01 Vlašim

Aeroklub Vlašim, z.s., Domašín 273 - Letiště, 258 01
Vlašim, ☎ +420 317 842 582, info@lkvl.cz
David Říha (responsible person) ☎ +420 606 349 764

Customs and immigration clearance: NIL

There is kit makers activity possible northeast of THR
RWY 31.

