

# LKHN Hranice

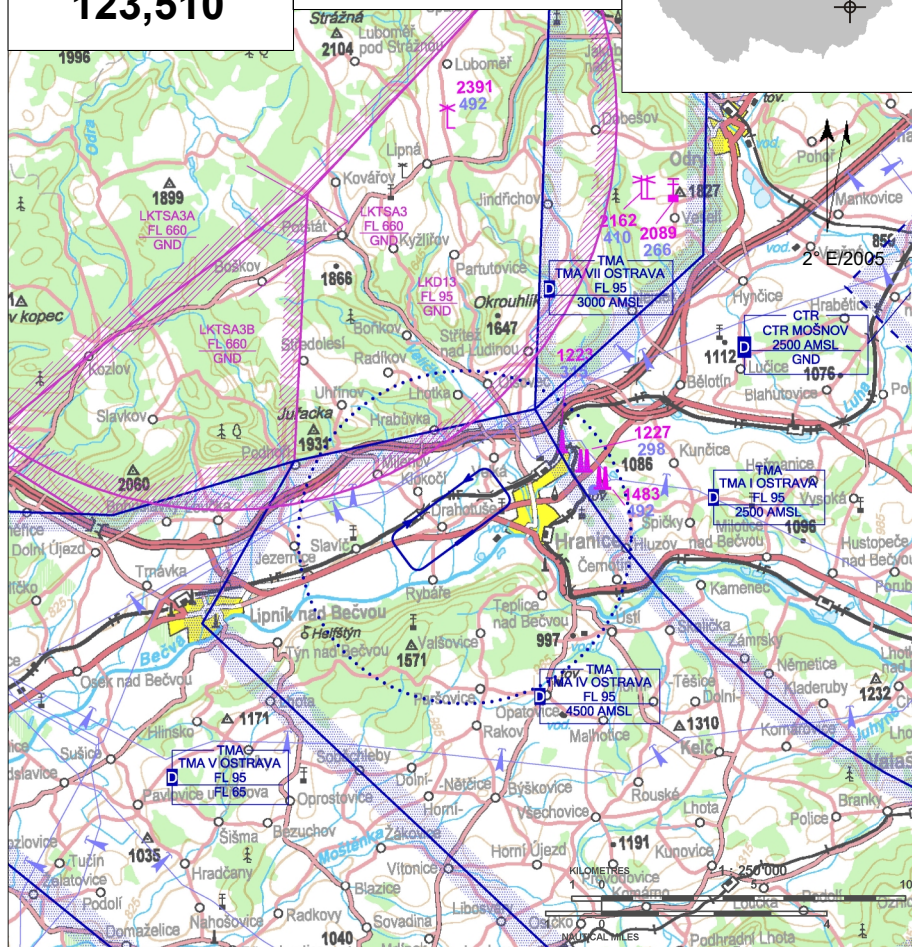
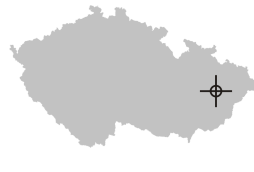
§ Public domestic aerodrome

✈ VFR day, parachute jumping operation



**Hranice RADIO**  
**123,510**

**ARP:** 49° 32' 46" N, 17° 42' 16" E  
2,5 km W Hranice  
**ELEV:** 797 ft / 243 m  
**Circuit:** 1800 ft / 545 m AMSL



LKHN is situated below TMA IV Ostrava (4500 FT AMSL - FL95), in vicinity TMA I Ostrava (2500 FT AMSL - FL95), TMA VII Ostrava (3000 FT AMSL - FL95) and LKTS A3 (GND - FL660).

#### Noise abatement procedures

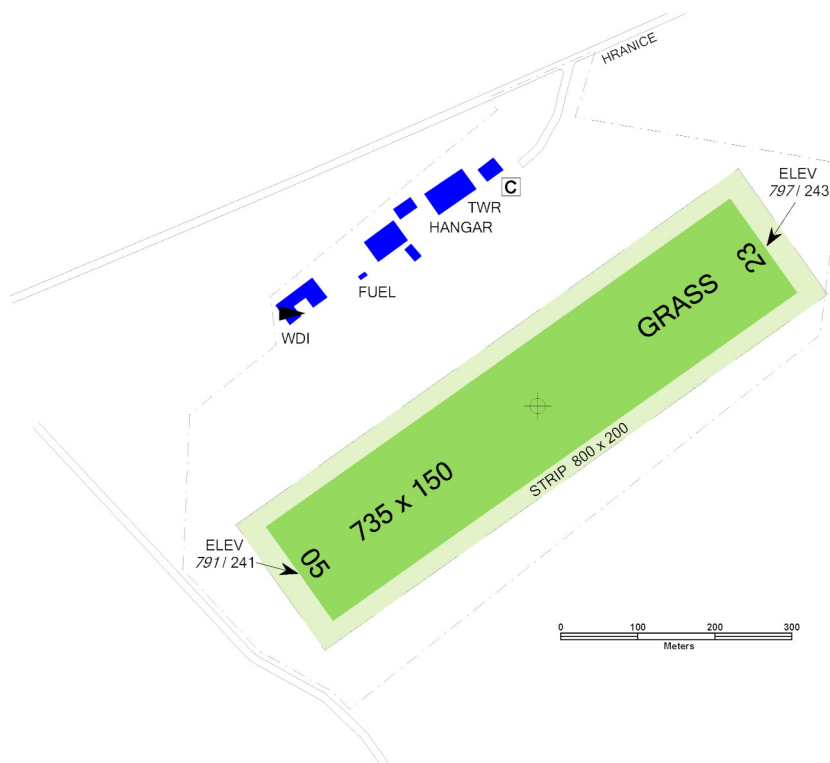
- After take-off in direction 05 turn left out of built-up areas. RWY 23 should be used for take-offs if meteorological and operational conditions allow it.
- Flights of powered aeroplanes including sporting flying equipments over villages in the vicinity of AD are prohibited below 1800 ft/545 m AMSL.

# LKHN Hranice



Hranice RADIO  
**123,510**

RWY	Magnetic direction	RWY dimensions	Strength	TORA	TODA	ASDA	LDA
05	054°	735 x 150	5700 kg / 0.7 MPa	735	800	735	735
23	234°	735 x 150	5700 kg / 0.7 MPa	735	800	735	735



15 APR - 15 OCT  
SAT, SUN, HOL 0700 - 1400  
otherwise O/R



NATURAL 95



TOTAL AERO D100, TOTAL AERO DM  
15W50



O/R, limited



NIL



Hranice



NIL



bus, taxi



**Aeroklub Hranice z.s.**

B. Němcové II 573, 753 61 Hranice IV - Drahotuše,

+420 581 616 167, +420 581 696 976,

aeroklub.hranice@seznam.cz

Customs and immigration clearance: NIL



Air Navigation Services  
of the Czech Republic