


LKSZ Sazená

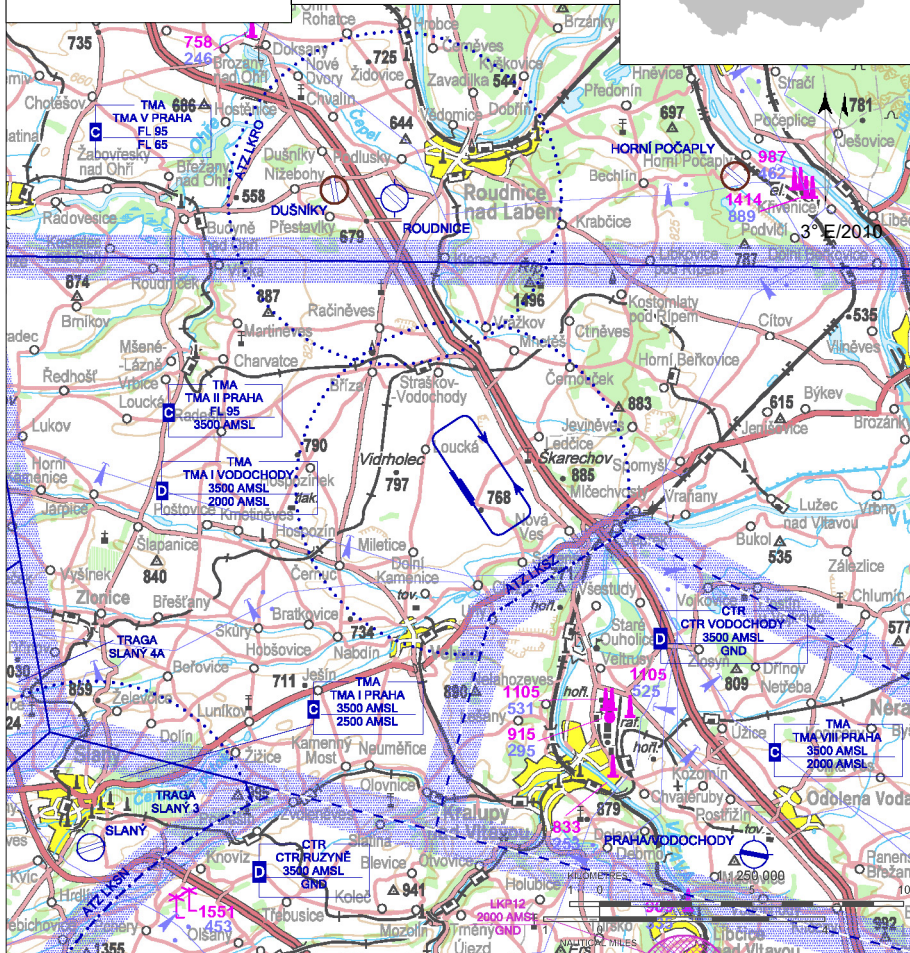
 Public domestic aerodrome

 VFR day/night, parachute jumping operation



Sazená RADIO
119,640

ARP: 50° 19' 29" N, 14° 15' 32" E
6 km NNE Velvary; 8,9 km
NNW Kralupy nad Vltavou
ELEV: 765 ft / 233 m
Circuit: 1600 ft / 488 m AMSL



AD is located under TMA Vodochody. In operational hours of AD PRAHA/Vodochody MAX altitude in ATZ LKSZ without co-ordination is 2000 ft AMSL. Arrivals and departures shall be carried out with regard to the vicinity of CTR Vodochody.

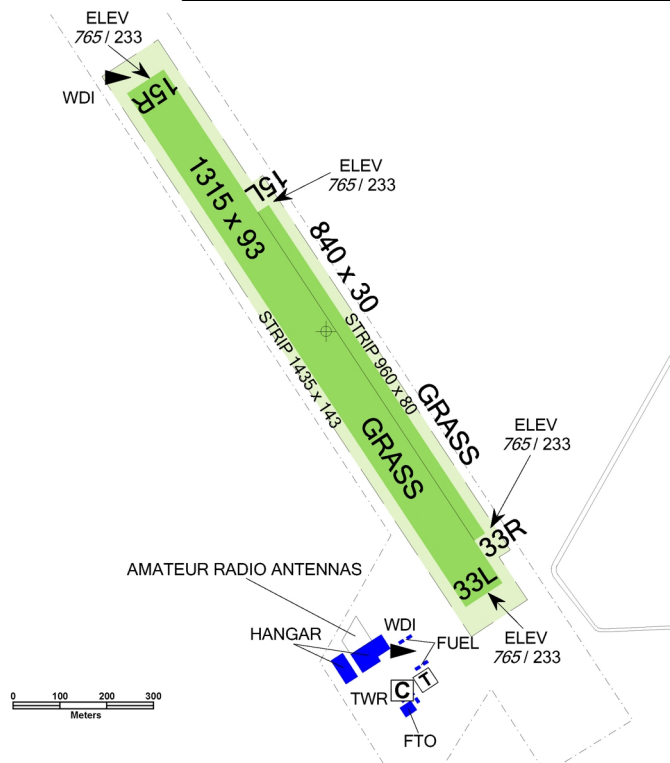
By reason of noise abatement the arrivals, departure and traffic circuits of aeroplanes (including sporting flying equipment) have to be carried out to avoid villages Sazená, Loucká and Ledčice.

LKSZ Sazená



Sazená RADIO
119,640

RWY	Magnetic direction	RWY dimensions	Strength	TORA	TODA	ASDA	LDA
33L	325°	1315 x 93	5700 kg / 0.7 MPa	1315	1375	1315	1315
15R	145°	1315 x 93	5700 kg / 0.7 MPa	1315	1375	1315	1315
33R	325°	840 x 30	5700 kg / 0.7 MPa	840	900	840	840
15L	145°	840 x 30	5700 kg / 0.7 MPa	840	900	840	840



1 APR - 15 OCT
SAT, SUN, HOL 0700 - 1500
otherwise O/R



BA95



TOTAL AERO D100



O/R, limited



NIL



hotels in Kralupy nad Vltavou; at the aerodrome - limited, by prior arrangement



NIL



bus - Ledčice cross-road (3 km), train - railway station Nové Ouholice (6 km)



Aeroklub Kralupy nad Vltavou, z.s.

28. října č. 92, 278 01 Kralupy nad Vltavou,

☎ +420 315 761 135, lksz@seznam.cz

Jan Šimon - the head of aeronautical operation

☎ +420 603 866 458, EN

Lukáš Fiala - chairman of aeroklub ☎ +420 602 441 829

Customs and immigration clearance: NIL

RWY 15L/33R is equipped for night traffic operation by runway edge lights. Usage: on request.

