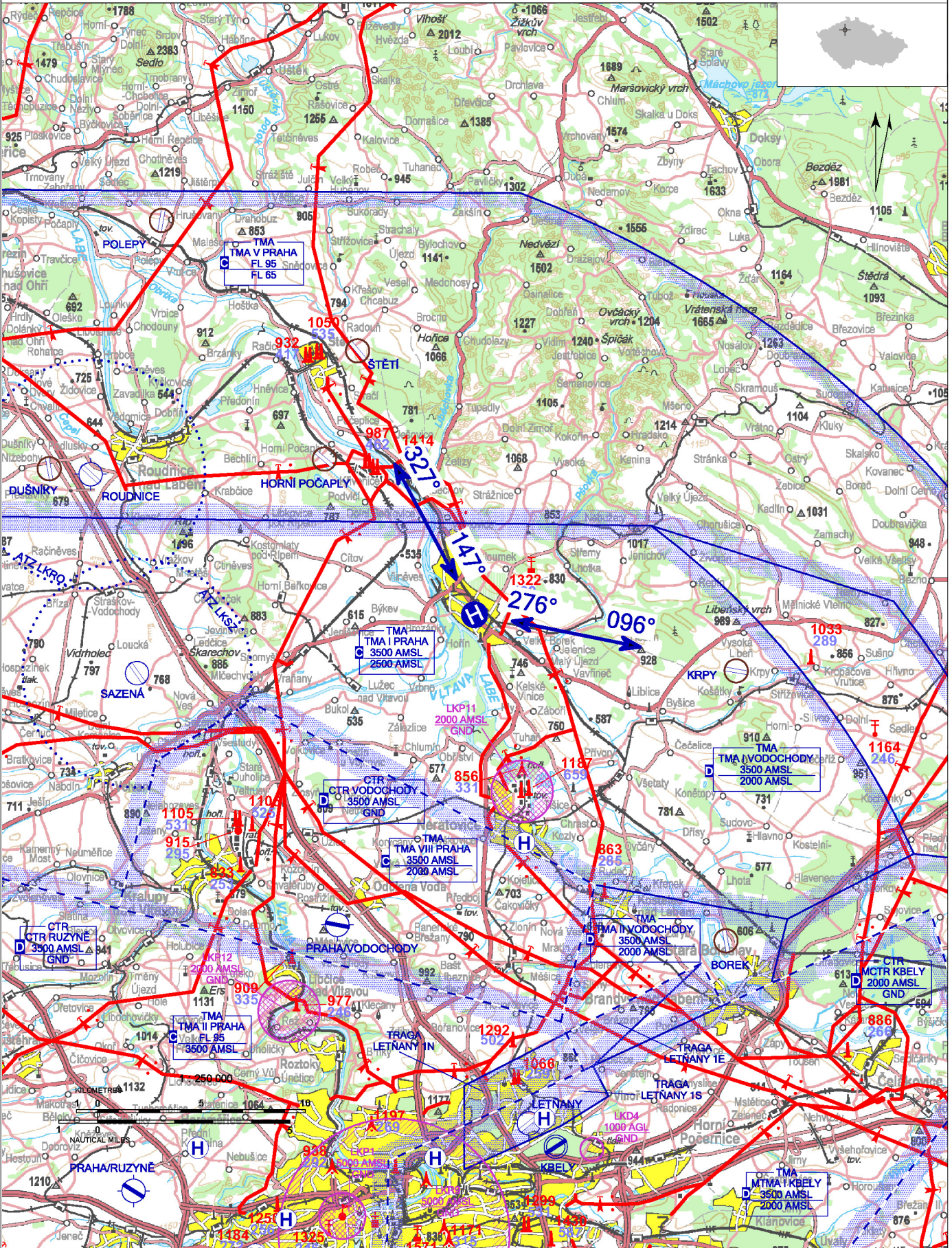


LKME - Mělník

Private domestic heliport HEMS

VFR day/night

50 21 06,65 N, 014 29 12,62 E POS: 1 km E Mělník city center ELEV: 557 ft / 170 m



! Only HEMS flights allowed.
 Descent gradient 1000 ft/1 NM.
 Lights are controlled locally from the control room (telephone: +420 315 623 191 or +420 315 623 197).

LKME - Mělník

surface-level HEMS heliport
 value „D“ – 17 m (limitedly 19 m)
 FATO – square 26 x 26 m, grass
 SA – circle diameter 44 m, grass
 TLOF – square 15 x 15 m, puzzle pavement
 platform, strength 6400 kg / 0,4 MPa

WDI (25 m NE)
 FATO: perimeter marking FATO/lighting FATO,
 designation marking
 TLOF: perimeter marking TLOF/lighting TLOF
 A-PAPI: 9,3°
 ALS: shortened, length 25 m
 heliport beacon





1	building	50 21 05,23 N 014 29 12,02 E	614 ft / 187 m	night marking
2	training tower	50 21 06,52 N 014 29 10,53 E	597 ft / 182 m	night marking



Underlying data © ČÚZK

 **Zdravotnická záchraná služba Středočeského kraje, příspěvková organizace**
 Bezručova 3409, 276 01 Mělník
 Bc. Roman Chochola (responsible person of the operator) ☎ +420 731 137 066,
 roman.chochola@zachranka.cz
 PBX ☎ +420 315 625 540
 dispatching (lighting control) ☎ +420 315 623 191,
 ☎ +420 315 623 197

	Approach:	Take-offs:
VFR day	147°, 276°	096°, 327°
VFR night	147°	096°, 327°

-  HX
 -  NIL
 -  NIL
 -  NIL
- Rescue and fire service: NIL