



LKLB Liberec

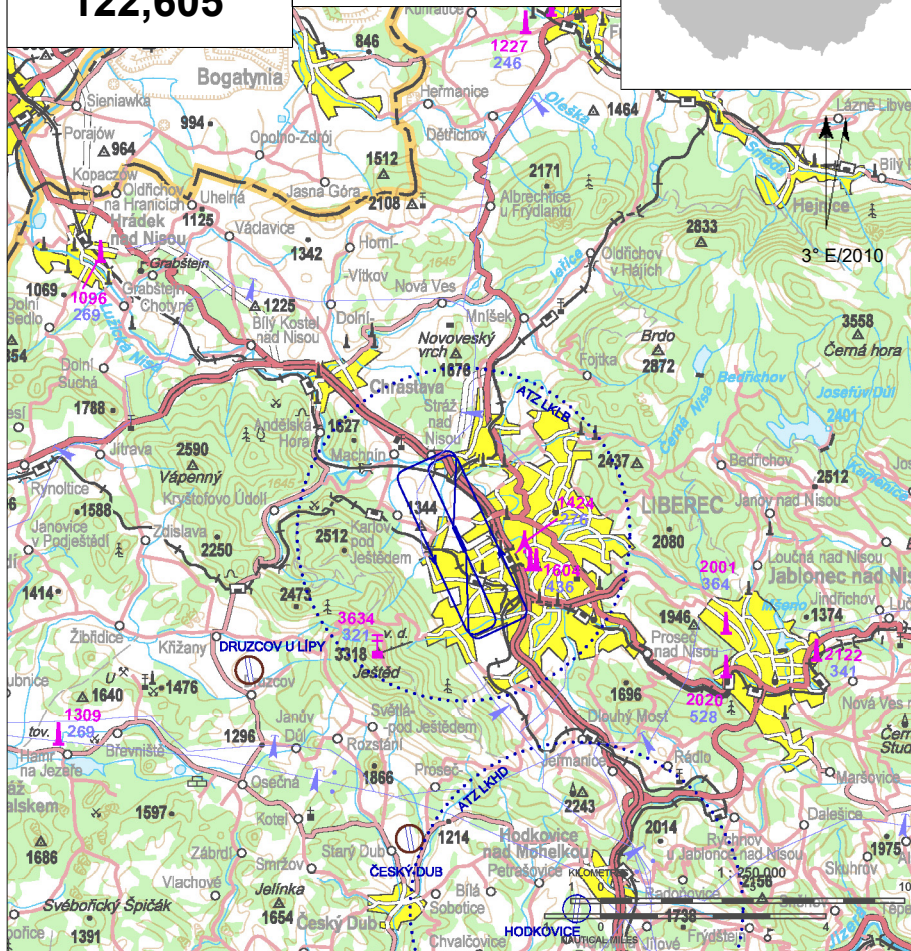
 Private international aerodrome

 VFR day, parachute jumping operation



Liberec RADIO
122,605

ARP: 50° 46' 06" N, 15° 01' 30" E
2,5 km W Liberec
ELEV: 1329 ft / 405 m
Circuit: 2330 ft / 710 m AMSL



Noise abatement

- Flights over the built up area of the town Liberec (with the exception of traffic circuits) are to be flown at MNM altitude 3300 ft/1000 m AMSL. Carry out the trajectory of flight so as not to circle repeatedly in the same area.

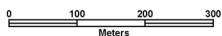
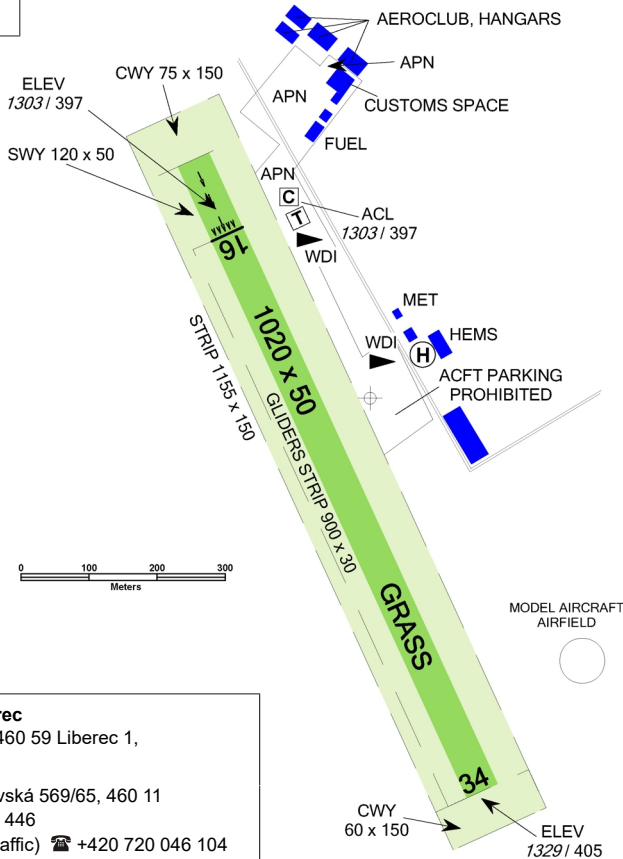
In time of Providing information to known traffic, considering the meteorological situation and further traffic conditions it is necessary to favour the direct approaches and direct departures of ACFT without needless circling flights.

LKLB Liberec



Liberec RADIO
122,605

RWY	Magnetic direction	RWY dimensions	Strength	TORA	TODA	ASDA	LDA
16	162°	1020 x 50	5700 kg / 0.5 MPa	1020	1080	1020	900
34	342°	900 x 50	5700 kg / 0.5 MPa	960	960	1020	1020



Statutární město Liberec

Nám. Dr. E. Beneše 1, 460 59 Liberec 1,
☎ +420 485 243 111

Aeroklub Liberec z.s. Ostašovská 569/65, 460 11
Liberec 11, ☎ +420 778 006 446

Tomáš Kulhavý (head of air traffic) ☎ +420 720 046 104
Professional Meteorological Station ☎ +420 606 779 570

Customs and immigration clearance: After agreement with Aeroklub Liberec MIN 24 HR in advance on ☎ +420 720 046 104.

Taxiing prohibited outside movement area marked by barrels.

Aircrafts and helicopters are prohibited from parking on places marked on parking at ADC due to disruption of approach path for rescue service helicopters. It is also forbidden to park on unapproved grounds, these areas are outside marked movement areas of the aerodrome.



HO (Aeroklub Liberec) otherwise O/R



NIL



TOTAL AERO D100



O/R, limited



O/R, limited



hotels Liberec



NIL



bus 27, 600, 14, 16,
taxi ☎ +420 602 410 760

