

LKTO Toužim

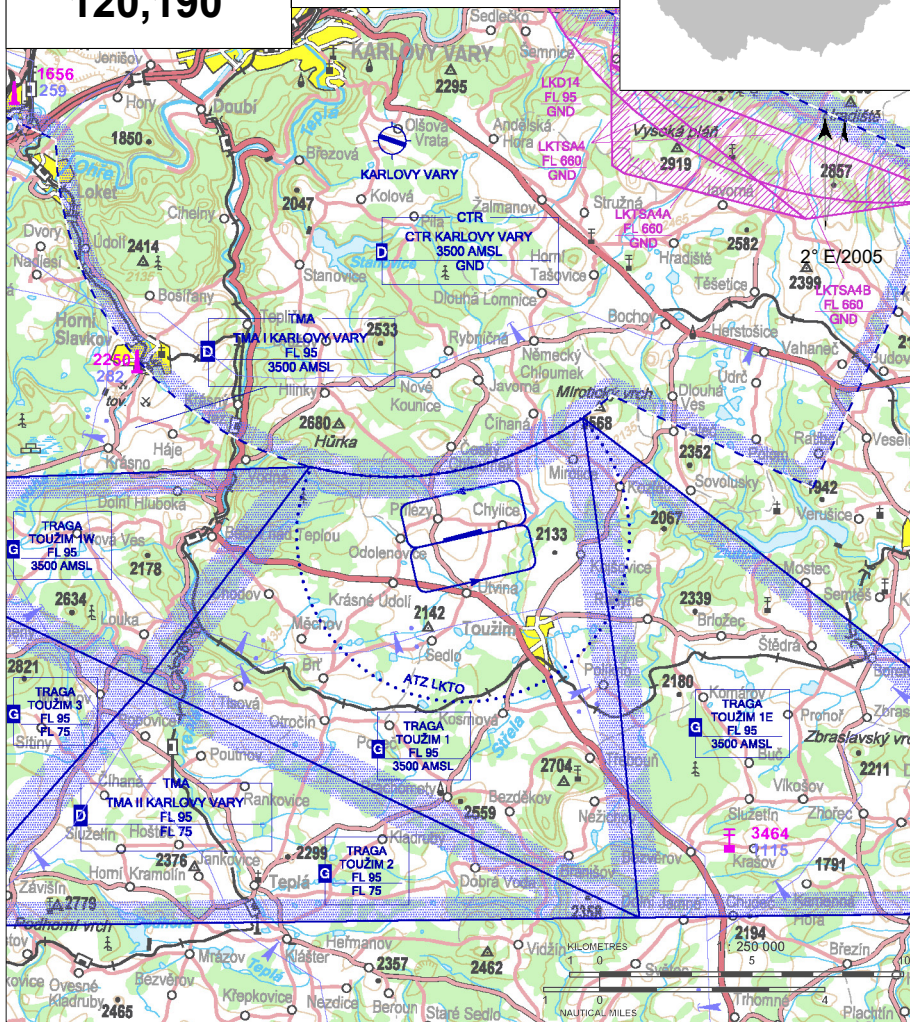
§ Public domestic aerodrome

✈ VFR day



Toužim RADIO
120,190

ARP: 50° 05' 11" N, 12° 57' 10" E
2 km GEO 345° Toužim near Přilezy
ELEV: 2123 ft / 647 m
Circuit: 3100 ft / 950 m AMSL



AD is located under TMA Karlovy Vary, 2 km N RWY is CTR Karlovy Vary, aeronautical operation is controlled by Operational instruction with TWR LKKV.

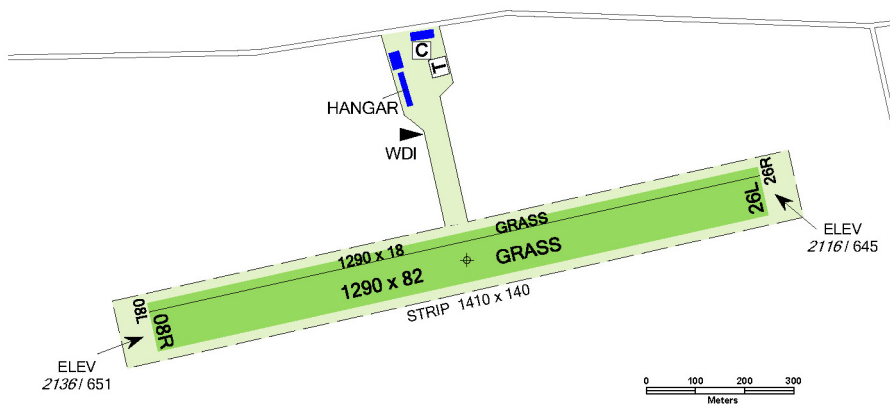
After takeoff from RWY 26 at distance of 1 km in front of municipality Odolenovice turn left between municipalities Odolenovice and Krasne Udoli.

LKTO Toužim



Toužim RADIO
120,190

RWY	Magnetic direction	RWY dimensions	Strength	TORA	TODA	ASDA	LDA
08R	075°	1290 x 82	5700 kg / 0.8 MPa	1290	1350	1290	1290
26L	255°	1290 x 82	5700 kg / 0.8 MPa	1290	1350	1290	1290
08L	075°	1290 x 18	5700 kg / 0.8 MPa	1290	1350	1290	1290
26R	255°	1290 x 18	5700 kg / 0.8 MPa	1290	1350	1290	1290



15 APR - 15 OCT
SAT, SUN, HOL 0700 - 1400
during Aeroklub operation and O/R



Natural 95



Aeroshell 100



Limited, by prior agreement



NIL



19 persons at AD, otherwise Krásné Údolí,
Toužim, Karlovy Vary



there is only a refreshment at AD, otherwise
Krásné Údolí, Útvina



bus Plzeň-Karlovy Vary, bus stop Útvina,
Krásné Údolí



Aeroklub Toužim, z.s.

364 01 Toužim, ☎ +420 353 312 447,
☎ +420 722 628 006, aktouzim@volny.cz

Providing information to known traffic

☎ +420 722 628 006

Jiří Procházka - head of air traffic ☎ +420 603 790 470

Petr Jiránek ☎ +420 602 213 207, EN

Customs and immigration clearance: NIL

