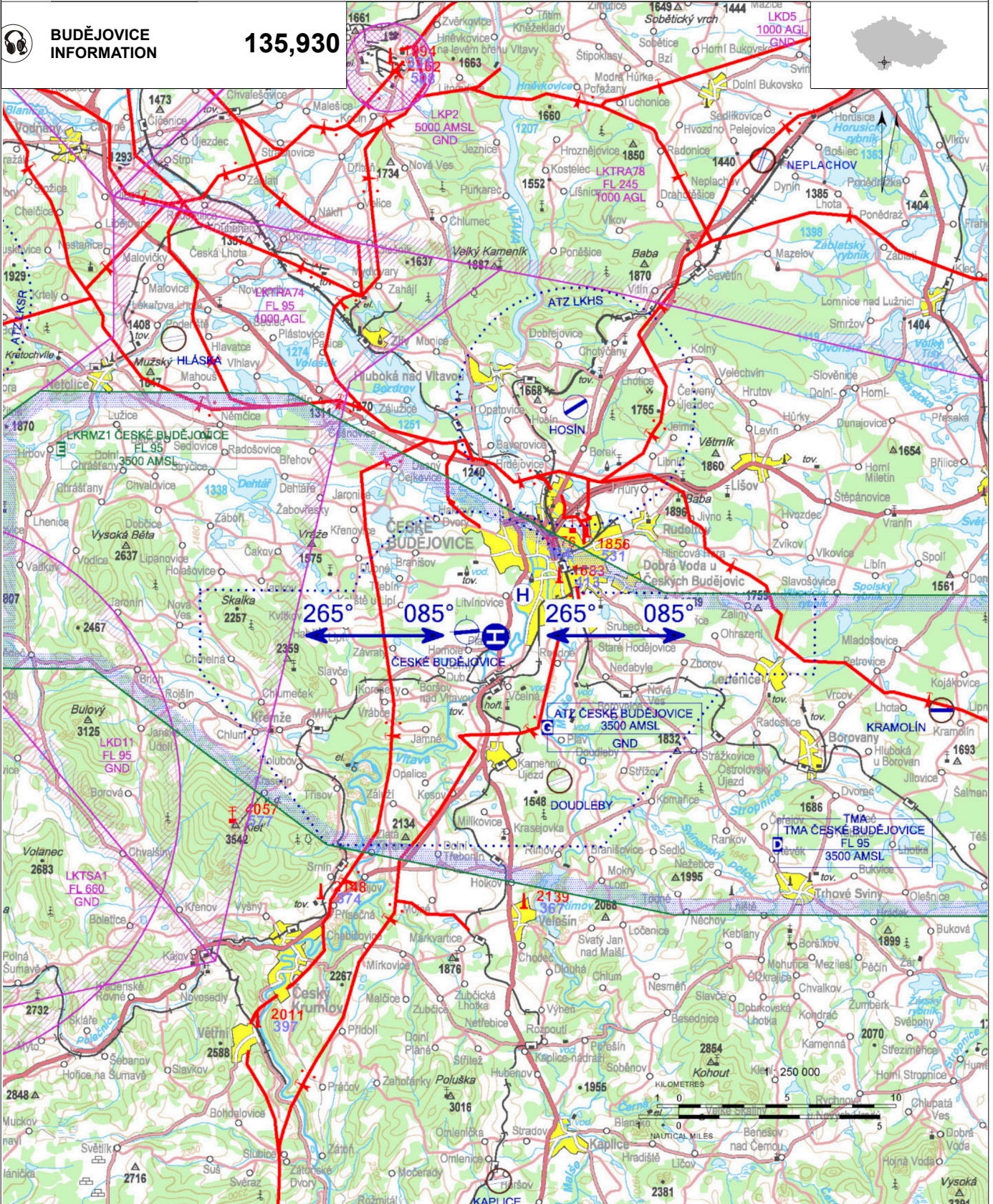


# LKCA - České Budějovice - Základna HEMS

Private domestic heliport HEMS

VFR day/night

48 56 40,06 N, 014 26 42,49 E POS: 4 km SSW České Budějovice town center ELEV: 1340 ft / 408 m



**!** Only HEMS flights permitted.  
 For arrivals and departures avoid built-up areas of Planá village.  
 Descent gradient 1000 ft / 1 NM.  
 Heliport lighting system control is provided locally from the heliport control room (phone ☎ +420 491 614 848) or by remote radio control from the helicopter deck (by keying **FREQ 135,460**):  
 3x within 5 seconds - intensity 10%  
 5x within 5 seconds - intensity 30%  
 7x within 5 seconds - intensity 100%  
 All lights turn off automatically 15 minutes after the radio remote control command.

# LKCA - České Budějovice - Základna HEMS

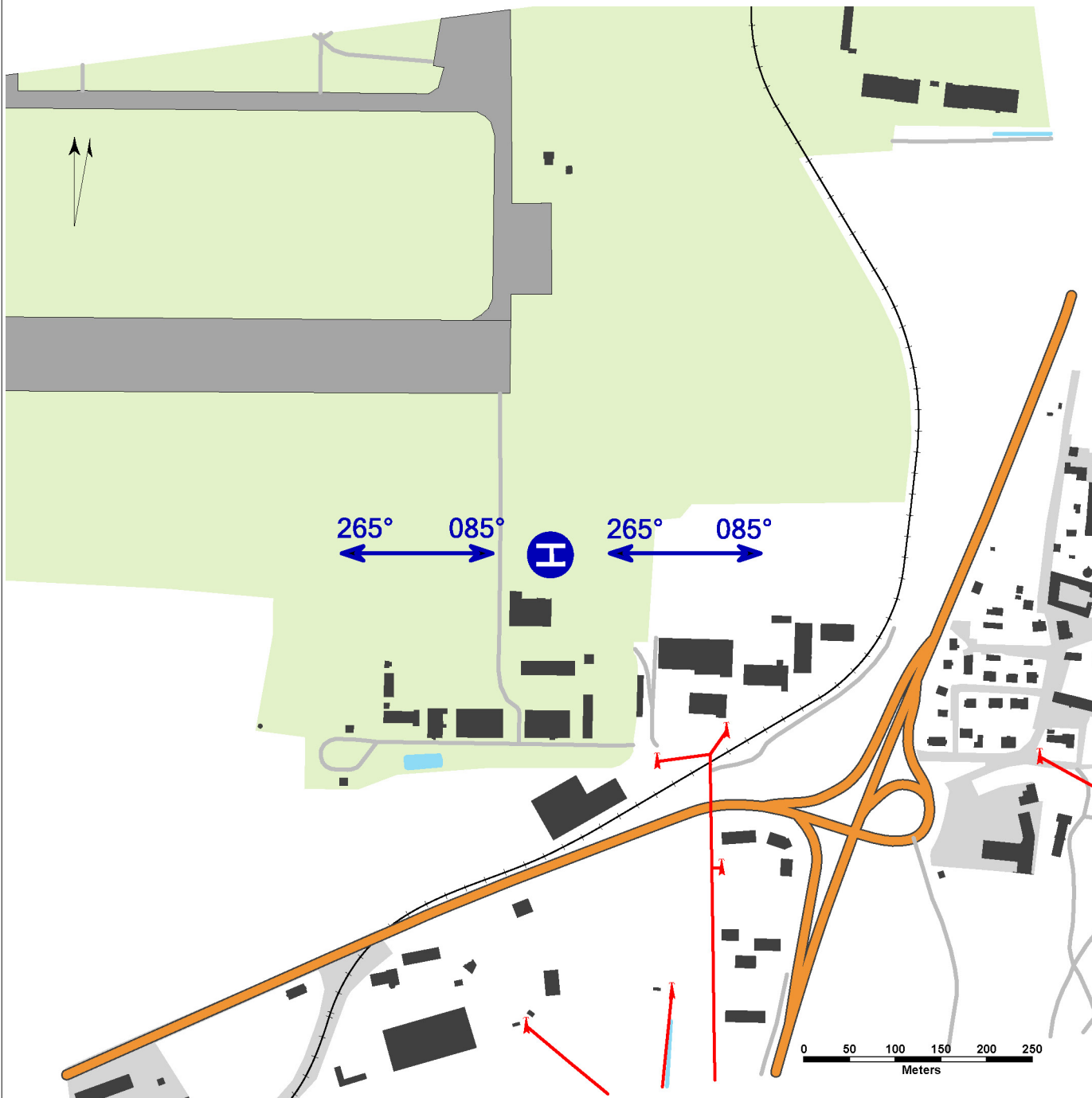


**BUDĚJOVICE  
INFORMATION**

**135,930**

surface-level HEMS heliport  
 value „D“ - 17 m  
 FATO – circle diameter 26 m, grass  
 SA – circle diameter 44 m, grass  
 TLOF 1 – square 10 m x 10 m, concrete, strength  
 3500 kg / 0,4 MPa  
 TLOF 2 - square 10 m x 10 m, concrete, strength  
 3500 kg / 0,4 MPa

WDI (50 m ESE)  
 FATO: marking/lights FATO, marking/lights of aiming  
 point, recognition marking  
 TLOF 1: marking/lights TLOF, stand marking  
 TLOF 2: marking TLOF, stand marking  
 A-PAPI: 9,3°  
 ALS: shortened, length 25 m  
 Beacon



Underlying data © ČÚZK



**Jihočeské letiště České Budějovice, a.s.**  
 U Zimního stadionu 1952/2, 370 01 České  
 Budějovice 7, ☎ +420 387 204 550,  
 airport@airport-cb.cz

AFIS unit ☎ +420 386 325 339,  
 ☎ +420 725 036 721, twr@airport-cb.cz  
 Heliport service - helicopter emergency  
 medical service ☎ +420 491 614 838,  
 ☎ +420 491 614 848  
 Ing. Gustav Sysel ☎ +420 702 121 528,  
 sysel@airport-cb.cz

	Approach:	Take-offs:
VFR day	085°, 265°	085°, 265°
VFR night	265°	085°, 265°

🕒 HX

🛫 JET A-1

🚫 NIL

🚫 NIL

Rescue and fire service: Cat. H1