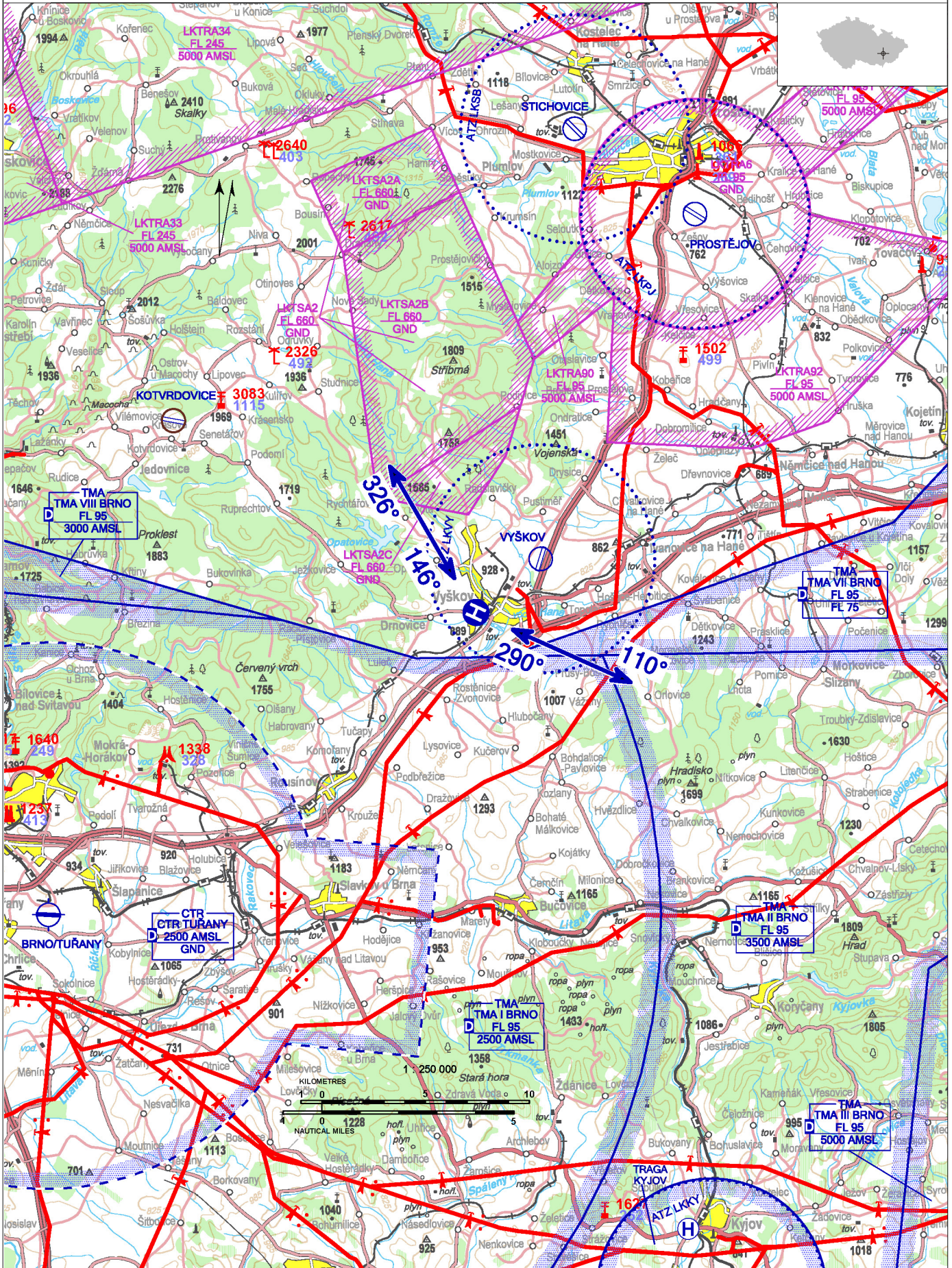


# LKVN - Vyškov - Nemocnice

Private domestic heliport HEMS

VFR day

49 16 41,25 N, 016 58 53,36 E POS: 1,3 km W Vyškov city center ELEV: 869 ft / 265 m

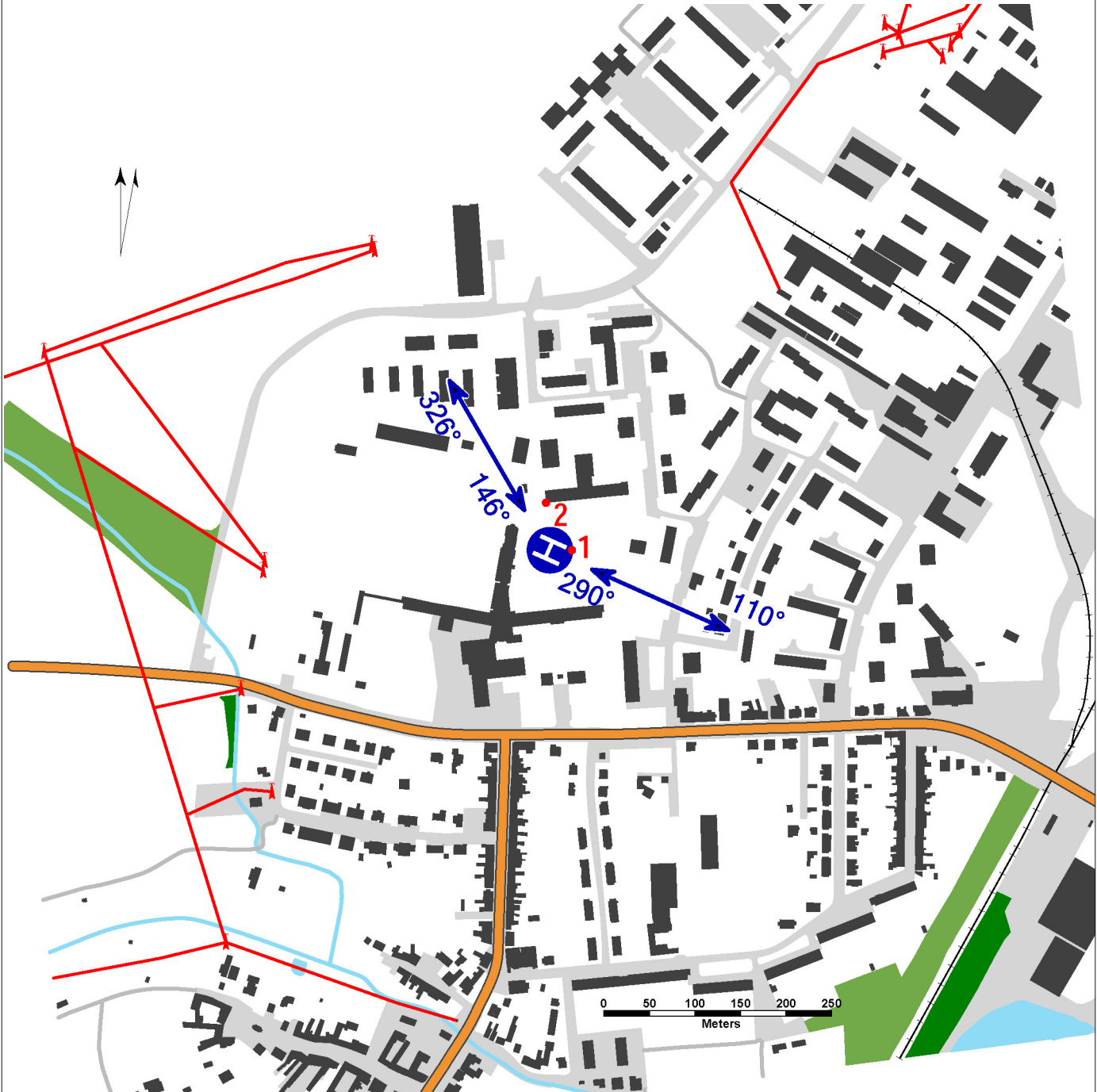


# LKVN - Vyškov - Nemocnice

surface-level HEMS heliport  
 value „D“ - 19 m  
 FATO – circle diameter 28,3 m, grass  
 SA – circle diameter 38 m, grass  
 TLOF – square 12 x 12 m, bitumen,  
 strength 6400 kg / 0,4 MPa

WDI (70 m NNE)  
 FATO: perimeter markings FATO, designation markings  
 TLOF: perimeter markings TLOF, TDPM marking

1	building	49 16 41,17 N 016 58 54,41 E	879 ft / 268 m	day marking
2	building	49 16 42,89 N 016 58 53,21 E	925 ft / 282 m	day marking



Underlying data © ČÚŽK

	Approach:	Take-offs:
VFR day	290°, 146°	110°, 326°
VFR night	NIL	NIL

**Nemocnice Vyškov, příspěvková organizace**  
 Purkyňova 235/36,  
 Nosálovice,  
 682 01 Vyškov  
 Ing. Pavel Horáček (responsible person of operator)  
 ☎ +420 702 280 193, horacek@nemvy.cz  
 Switchboard ☎ +420 517 315 111

- 🕒 HX
- 🚰 NIL
- 🚒 NIL
- 🚒 NIL
- 🚒 NIL
- 🚒 Rescue and fire service: NIL