



LKHV Hořovice

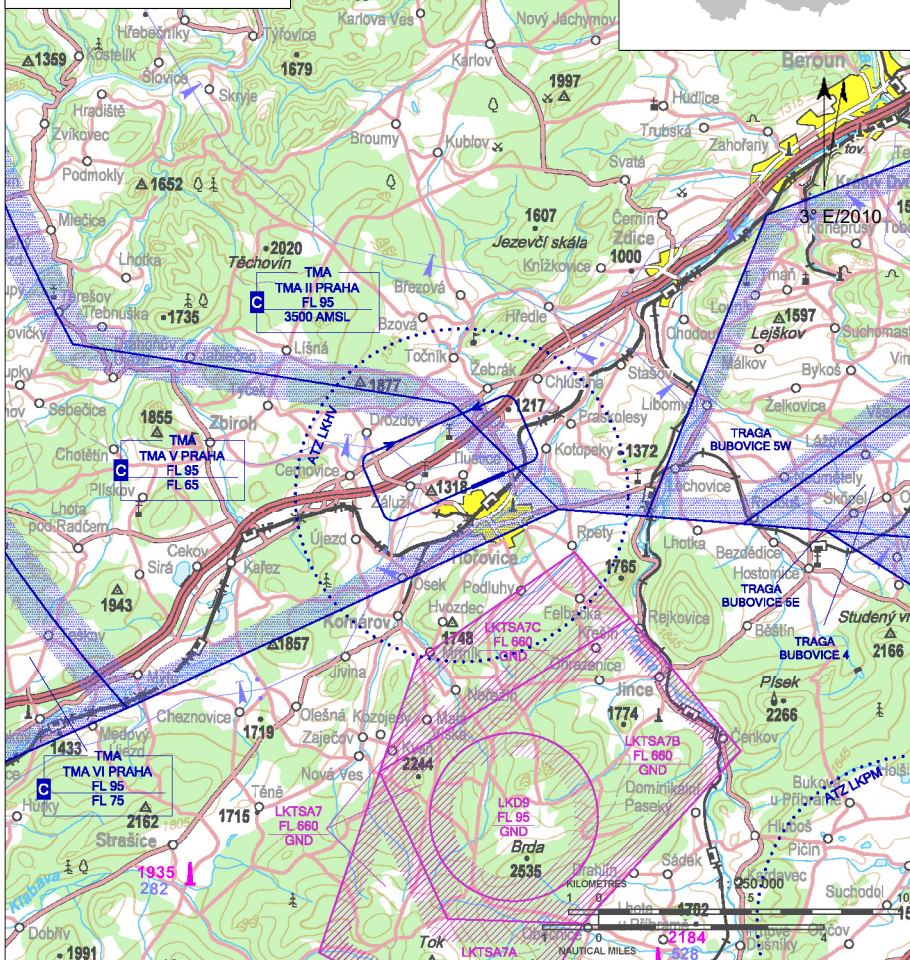
 Private domestic aerodrome

 VFR day, parachute jumping operation



Hořovice RADIO
135,580

ARP: 49° 50' 41" N, 13° 53' 09" E
1,5 km from city centre
of Hořovice, GEO 360°
ELEV: 1214 ft / 370 m
Circuit: 2200 ft / 670 m AMSL



With the exception of having to ensure the safety of the flight, the pilots are required to strictly observe the pattern of the traffic circuit and avoid overflying adjacent villages (Záluží, Tlustice, Kotopeky, Chlustina, Hořovice).

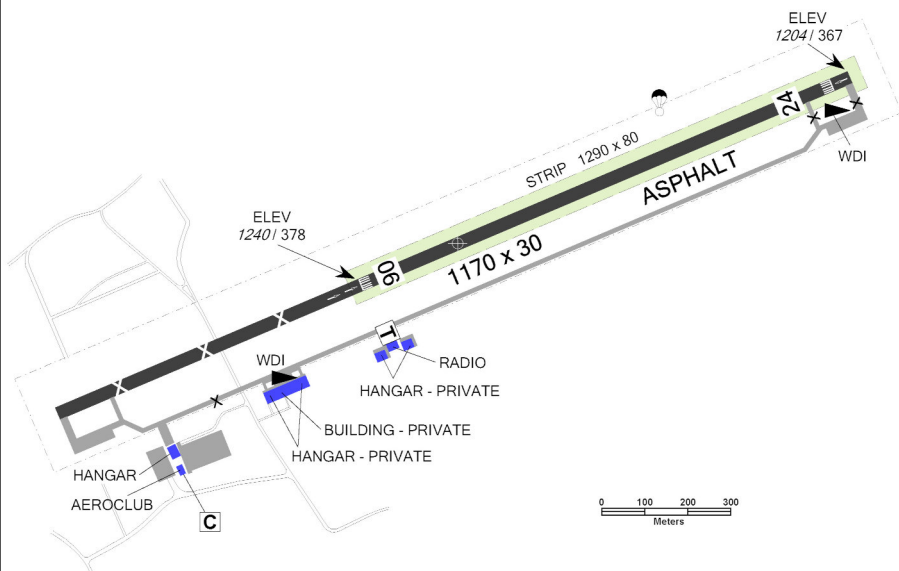
Southern part of the ATZ LKHV is bounded by LKTS7C. Pilots-in-command are required to verify the activation of this area in advance.

LKHV Hořovice



Hořovice RADIO
135,580

RWY	Magnetic direction	RWY dimensions	Strength	TORA	TODA	ASDA	LDA
06	063°	1170 x 30	PCN 25/R/B/Y/U	1170	1230	1170	1170
24	243°	1170 x 30	PCN 25/R/B/Y/U	1170	1230	1170	1170



Aeroklub Hořovice z.s.

Letiště Hořovice, 268 01
Hořovice, ☎ +420 775 780 035,
aeroklub.horovice@seznam.cz

Mgr. Karel Plzák (head of air traffic) ☎ +420 728 147 577

Karel Studnička (deputy head of air traffic)

☎ +420 602 313 316

Petr Sedláček (deputy head of air traffic)

☎ +420 720 404 671

Luděk Dopirák (head of Aeroclub - only PARA operation)

☎ +420 777 150 035

Customs and immigration clearance: NIL

Threshold of RWY 06 is shifted beyond the Tlustice - Hořovice road. Threshold of RWY 24 is shifted as well.

Exercise caution when crossing the Tlustice - Hořovice road. Pay attention to passing vehicles.

🕒 O/R

🛢️ BA 95 Natural, aviation petrol - NIL

🚗 ELF 100 AD - limited volume

🚗 O/R, limited

🔧 NIL

🏠 aeroclub rest, 30 beds O/R, hotel "Zelený strom" - city Hořovice, distance 1,5 km

🍴 restaurant Tlustice, dist 1 km at the aerodrome - NIL

🚂 railway station ČD Hořovice, dist 1,2 km

