


# LKMB Mladá Boleslav

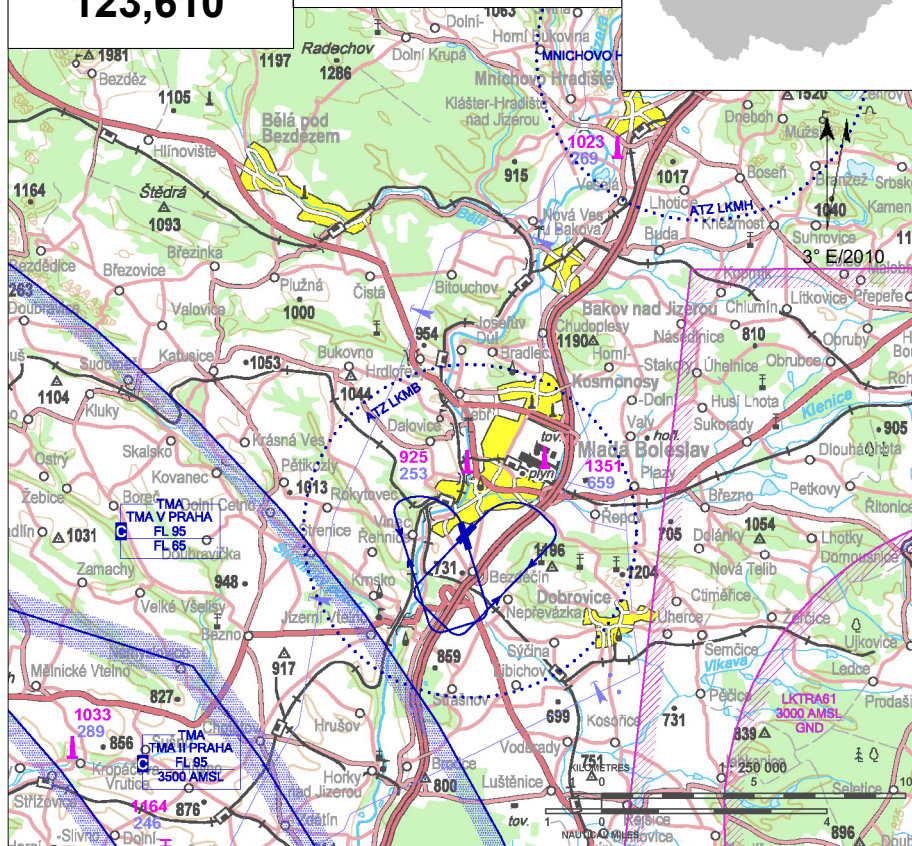
 Public domestic aerodrome

 VFR day, parachute jumping operation



**Boleslav RADIO**  
**123,610**

**ARP:** 50° 23' 54" N, 14° 53' 54" E  
2 km SSW Mladá Boleslav  
**ELEV:** 765 ft / 233 m  
**Circuit:** 1750 ft / 540 m AMSL



## Noise abatement procedures

- After taking-off from RWY 04 turn to the right to reduce the noise load of the built-up area in front of THR RWY 22.
- After taking-off from RWY 34 turn to the left to reduce the noise load of the built-up area in front of THR RWY 16.
- While carrying out a traffic circuit, avoid flying over the villages Vinec and Pisková Lhota, the populated area shall be flown around at 1750 ft / 540 m AMSL.
- The traffic circuit flights except the arrival and departure flights are prohibited from 1700 until 0600 UTC. Traffic circuits carried out by the ultralight aircraft are allowed.

Take off climb surface of RWY 04 and approach surface of RWY 22 is corrupted by factory chimney.  
DIST 3 km, AGL 200 m, AAL 175 m.

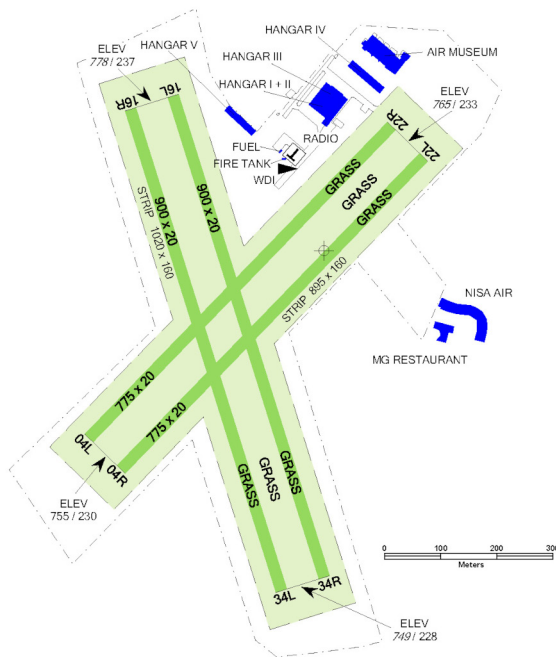


# LKMB Mladá Boleslav



**Boleslav RADIO**  
**123,610**

RWY	Magnetic direction	RWY dimensions	Strength	TORA	TODA	ASDA	LDA
04L	039°	775 x 20	5700 kg / 0.7 MPa	775	835	775	775
22R	219°	775 x 20	5700 kg / 0.7 MPa	775	835	775	775
04R	039°	775 x 20	5700 kg / 0.7 MPa	775	835	775	775
22L	219°	775 x 20	5700 kg / 0.7 MPa	775	835	775	775
16L	158°	900 x 20	5700 kg / 0.7 MPa	900	960	900	900
34R	338°	900 x 20	5700 kg / 0.7 MPa	900	960	900	900
16R	158°	900 x 20	5700 kg / 0.7 MPa	900	960	900	900
34L	338°	900 x 20	5700 kg / 0.7 MPa	900	960	900	900



15 APR - 15 OCT 0700-1600,  
otherwise O/R



AVGAS 100 LL, Natural 95, Jet-A1 self-service with TWINTRANS card, without card in operational hours, otherwise HO or O/R



TOTAL D100



O/R, limited



NIL



O/R, hotels Mladá Boleslav



Restaurant MG at the aerodrome



train, bus, taxi Mladá Boleslav



## Aeroklub Mladá Boleslav, z.s.

Regnerova 1306, 293 01 Mladá Boleslav,

+420 606 608 530, akmb@akmb.cz

Providing information to known traffic

+420 725 900 160

Igor Karul - head of air traffic +420 606 608 530

Zdeněk Ježek - chairman of aeroclub

+420 607 944 250, zdenek@jezek-z.cz, EN

Tomáš Svárovský +420 603 527 107

Michal Grusz +420 608 073 733,

michal.grusz@img-management.cz, EN, GER, RUS

Customs and immigration clearance: NIL



Air Navigation Services  
of the Czech Republic