

LKPD Pardubice

ARP: 50° 00' 48" N, 15° 44' 18" E
4 km SW from centre of Pardubice town
ELEV: 741 ft / 226 m

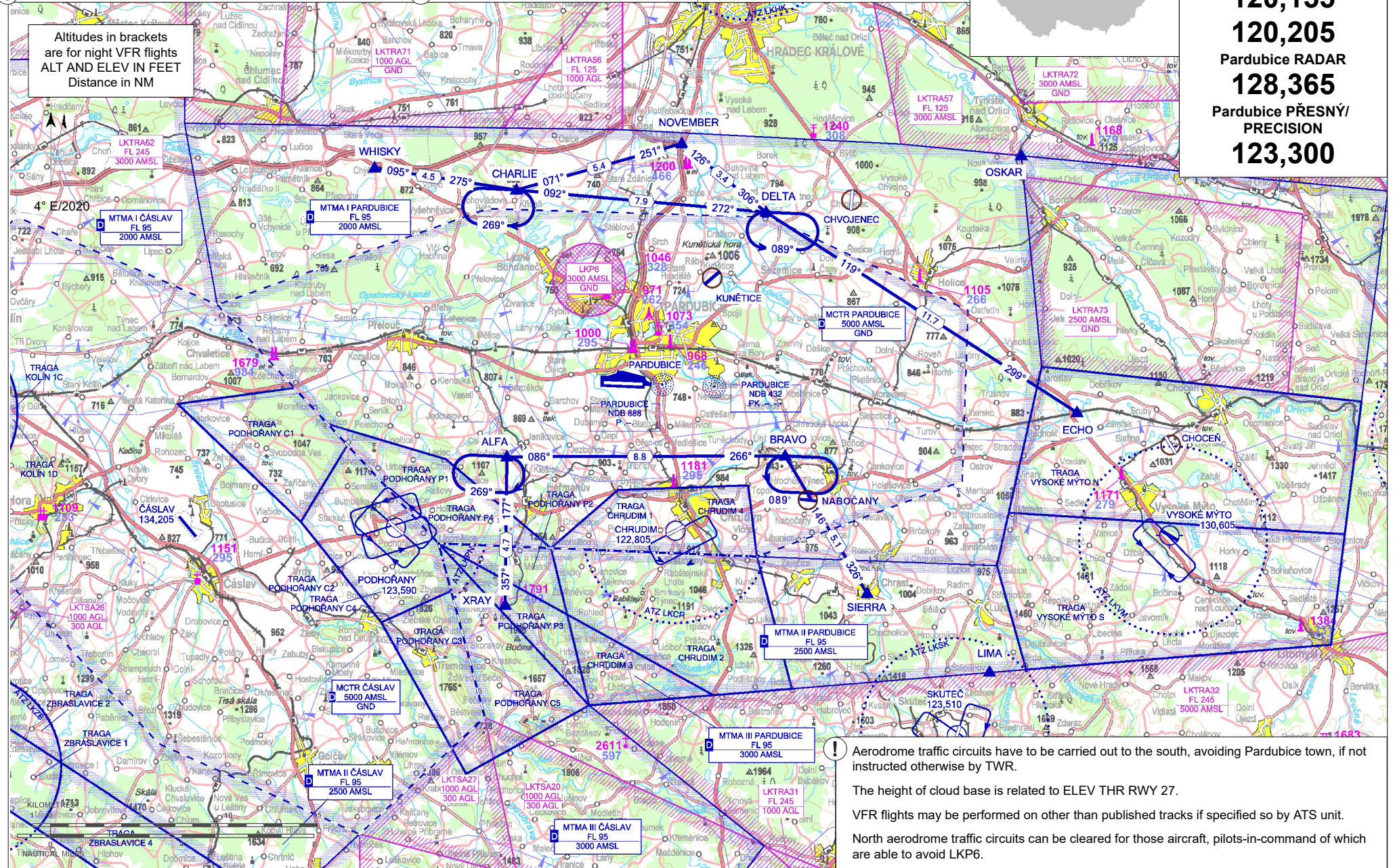


Pardubice VĚŽ/TOWER
120,155
120,205
Pardubice RADAR
128,365
**Pardubice PŘESNÝ/
PRECISION**
123,300

Public international aerodrome

IFR, VFR

Altitudes in brackets
are for night VFR flights
ALT AND ELEV IN FEET
Distance in NM



! Aerodrome traffic circuits have to be carried out to the south, avoiding Pardubice town, if not instructed otherwise by TWR.
The height of cloud base is related to ELEV THR RWY 27.
VFR flights may be performed on other than published tracks if specified so by ATS unit.
North aerodrome traffic circuits can be cleared for those aircraft, pilots-in-command of which are able to avoid LKP6.

DESIGNATION	LOCATION	COORDINATES	
ALFA	Svinčany - municipal office	49° 58' 31" N 015° 38' 35" E	
BRAVO	Úhřetice - industry hall	49° 58' 27" N 015° 52' 13" E	
CHARLIE	Kříčeň - collective farm	50° 06' 56" N 015° 39' 10" E	
DELTA	Bohumileč - 1 NM east of golf course	50° 06' 09" N 015° 51' 25" E	
ECHO	Zámorsk - train station	49° 59' 42" N 016° 06' 33" E	Entry / exit
LIMA	Lhota u Skutče - 0,3 NM west	49° 51' 33" N 016° 02' 05" E	Entry / exit
NOVEMBER	Opatovice - traffic roundabout	50° 08' 21" N 015° 47' 19" E	Entry / exit
OSKAR	Tůmovka - pond	50° 07' 50" N 016° 04' 00" E	Entry / exit
SIERRA	Chrast - church	49° 54' 05" N 015° 56' 09" E	Entry / exit
WHISKY	Chýšť - collective farm	50° 07' 40" N 015° 32' 12" E	Entry / exit
XRAY	Prachovice - cement plant	49° 53' 50" N 015° 38' 26" E	Entry / exit

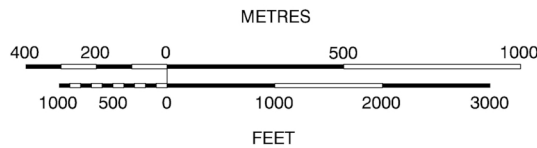
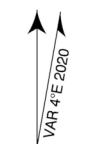
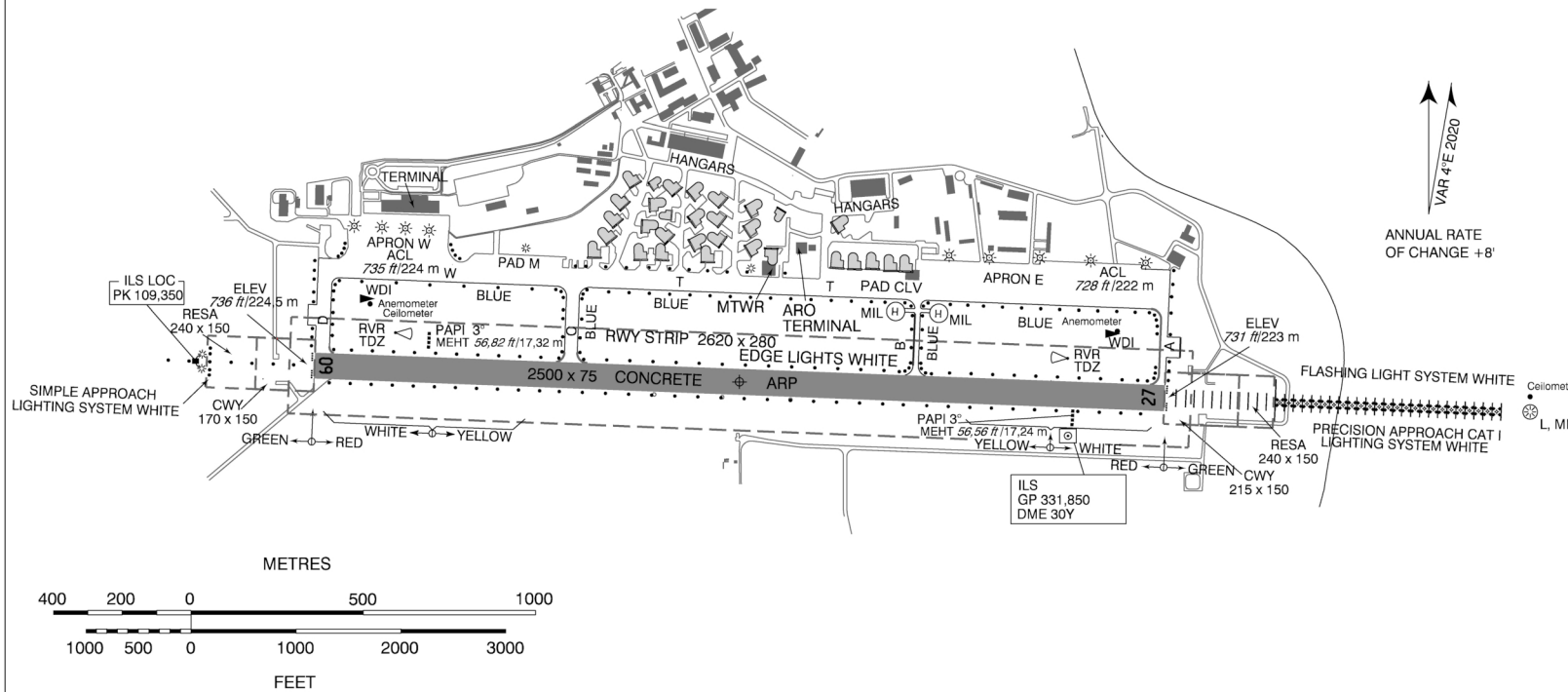
ARRIVAL ROUTES 09	WAYPOINT SEQUENCE
ECHO 1B	ECHO - DELTA - CHARLIE
NOVEMBER 1B	NOVEMBER - CHARLIE
SIERRA 1B	SIERRA - BRAVO - ALFA
WHISKY 1B	WHISKY - CHARLIE
XRAY 1B	XRAY - ALFA
ARRIVAL ROUTES 27	WAYPOINT SEQUENCE
ECHO 1A	ECHO - DELTA
NOVEMBER 1A	NOVEMBER - DELTA
SIERRA 1A	SIERRA - BRAVO
WHISKY 1A	WHISKY - CHARLIE - DELTA
XRAY 1A	XRAY - ALFA - BRAVO
DEPARTURE ROUTES 09	WAYPOINT SEQUENCE
ECHO 1E	DELTA - ECHO
NOVEMBER 1E	DELTA - NOVEMBER
SIERRA 1E	BRAVO - SIERRA
WHISKY 1E	DELTA - CHARLIE - WHISKY
XRAY 1E	BRAVO - ALFA - XRAY
DEPARTURE ROUTES 27	WAYPOINT SEQUENCE
ECHO 1W	CHARLIE - DELTA - ECHO
NOVEMBER 1W	CHARLIE - NOVEMBER
SIERRA 1W	ALFA - BRAVO - SIERRA
WHISKY 1W	CHARLIE - WHISKY
XRAY 1W	ALFA - XRAY

LKPD Pardubice



Pardubice VĚŽ/TOWER

120,155
120,205



RWY	Magnetic direction	RWY dimensions	Strength	TORA	TODA	ASDA	LDA
09	089°	2500 x 75	PCN 48/R/B/W/T	2500	2715	2500	2500
27	269°	2500 x 75	PCN 48/R/B/W/T	2500	2670	2500	2500



East Bohemian Airport, a.s.

Pražská 179,
530 06 Pardubice 6,
☎ +420 460 002 870,
AFTN: LKPDZPX (ARO) ,
AFTN: LKPDZTX (TWR) ,
SITA: PEDCZXH

handling - ☎ +420 460 002 873,
☎ +420 460 002 872,
☎ +420 724 462 462,
handling@airport-pardubice.cz
military TWR - ☎ +420 973 333 171,
☎ +420 973 242 440,
☎ +420 973 242 097, twr.lkpd@mo.gov.cz



MON-SUN 0700-1800 (0600-1700)
Flights outside of operational hours O/R 24 HR in advance in the operational hours of the AD. Below listed services are provided only for aircraft arriving and departing in the operational hours of the AD. Contact handling for service provision outside of the operational hours of the AD.



JET A1, AVGAS 100 LL



NIL



NIL



Not available.



Hotels in Pardubice, Hradec Králové, Chrudim, Přelouč.



Restaurants in the city center (3,5 km).



Municipal transport, TAXI, car rent.

Customs and immigration clearance: As AD Administration.

Authorized signalmen control the movement and assign parking positions to aircraft on the apron.

Unless otherwise instructed by TWR, after landing and leaving RWY or starting up engines on APN ACFT has to wait for "FOLLOW ME", that provides their guidance along TWY from/to APN.

Intentionally left blank