

LKTC Točná

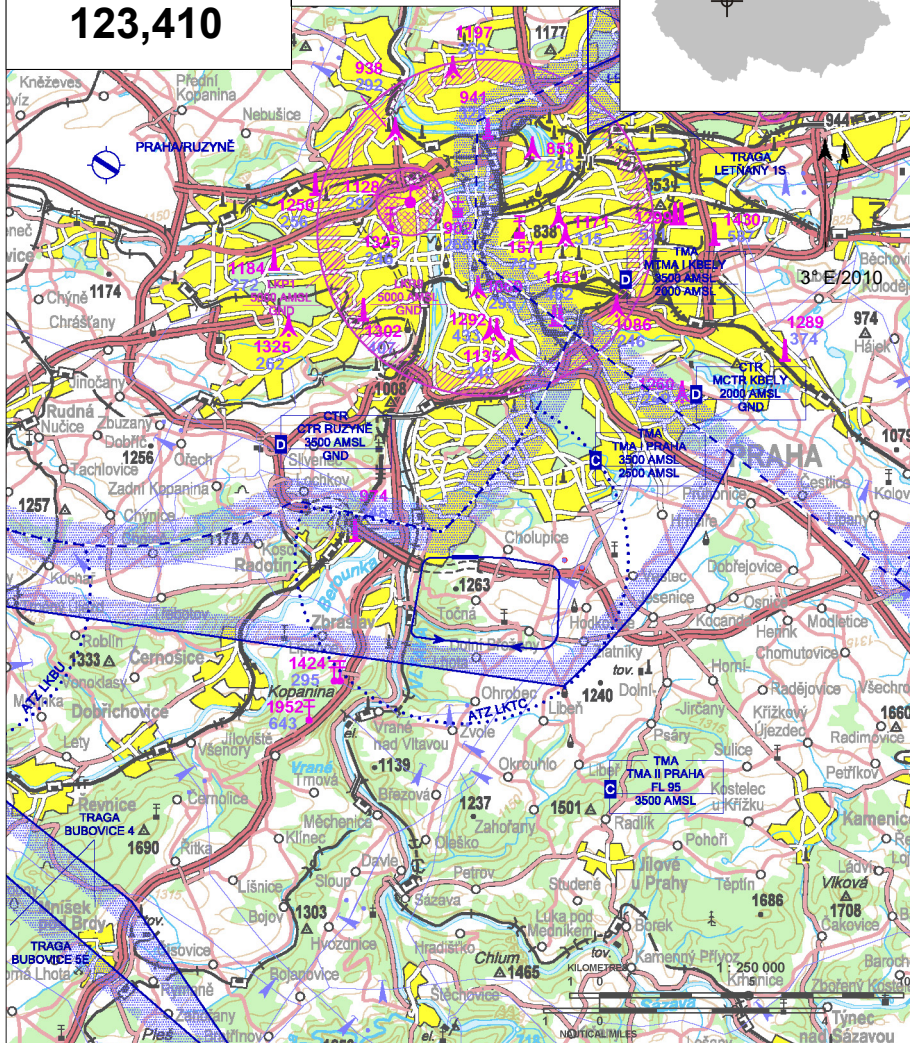
§ Private domestic aerodrome

✈ VFR day



Točná RADIO
123,410

ARP: 49° 59' 07" N, 14° 25' 32" E
9 km S Praha
ELEV: 1027 ft / 313 m



ATZ is restricted horizontally by CTR Ruzyně and vertically by lower limit of TMA I Praha (2500 ft AMSL on QNH of LKPR).

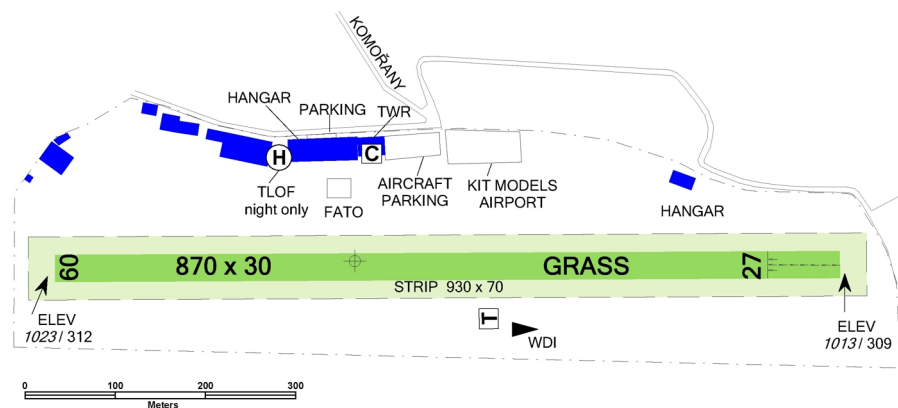
Aeroplanes arriving to RWY 09 can fly only outside of CTR Ruzyně, or can request clearance for entry to the CTR on FREQ Ruzyně Radar 118,310.

LKTC Točná



Točná RADIO
123,410

RWY	Magnetic direction	RWY dimensions	Strength	TORA	TODA	ASDA	LDA
09	087°	870 x 30	5700 kg / 0.4 MPa	790	820	870	870
27	267°	870 x 30	5700 kg / 0.4 MPa	870	900	870	790



Letecké Muzeum Točná, s.r.o.
Radlická 2, 150 00 Praha 5, airport@tocna.cz,
www.tocna.cz

Providing information to known traffic

☎ +420 724 443 882

Customs and immigration clearance: NIL

Aircraft model air field in close vicinity of RWY.
Movement of unmanned systems above the
aerodrome is coordinated during operation at the
aerodrome. Be careful.



O/R



NIL



Mobile JET II



Available



NIL



Praha



NIL



taxi, bus 1 km Komořany

