

LKMT OSTRAVA/Mošnov

ARP: 49° 41' 46" N, 18° 06' 39" E
 20 km SW Main railway station in Ostrava
 ELEV: 844 ft / 257 m

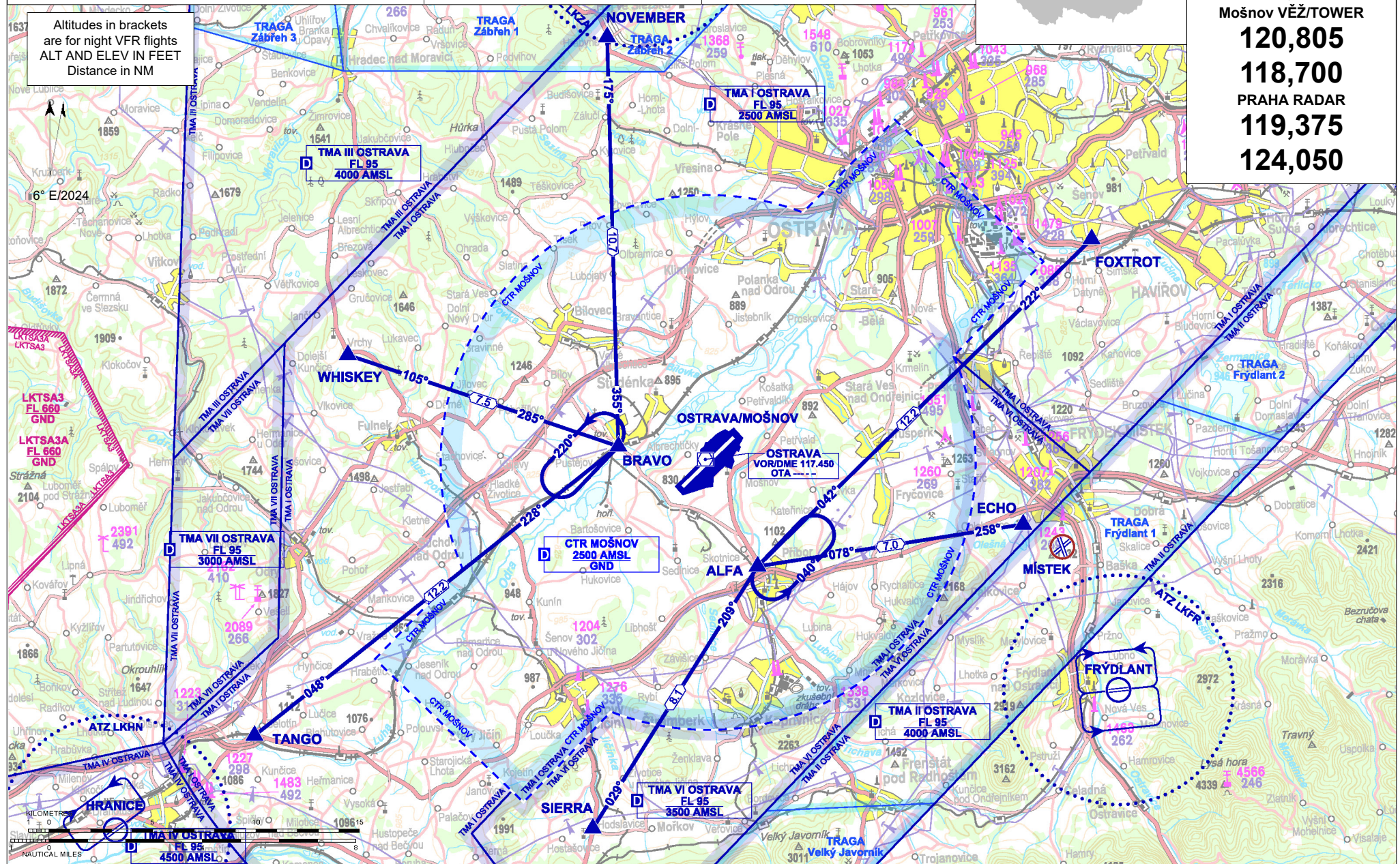


Mošnov ATIS
118,055
 Mošnov VĚŽ/TOWER
120,805
118,700
 PRAHA RADAR
119,375
124,050

S Public international aerodrome

X IFR, VFR

Altitudes in brackets are for night VFR flights
 ALT AND ELEV IN FEET
 Distance in NM



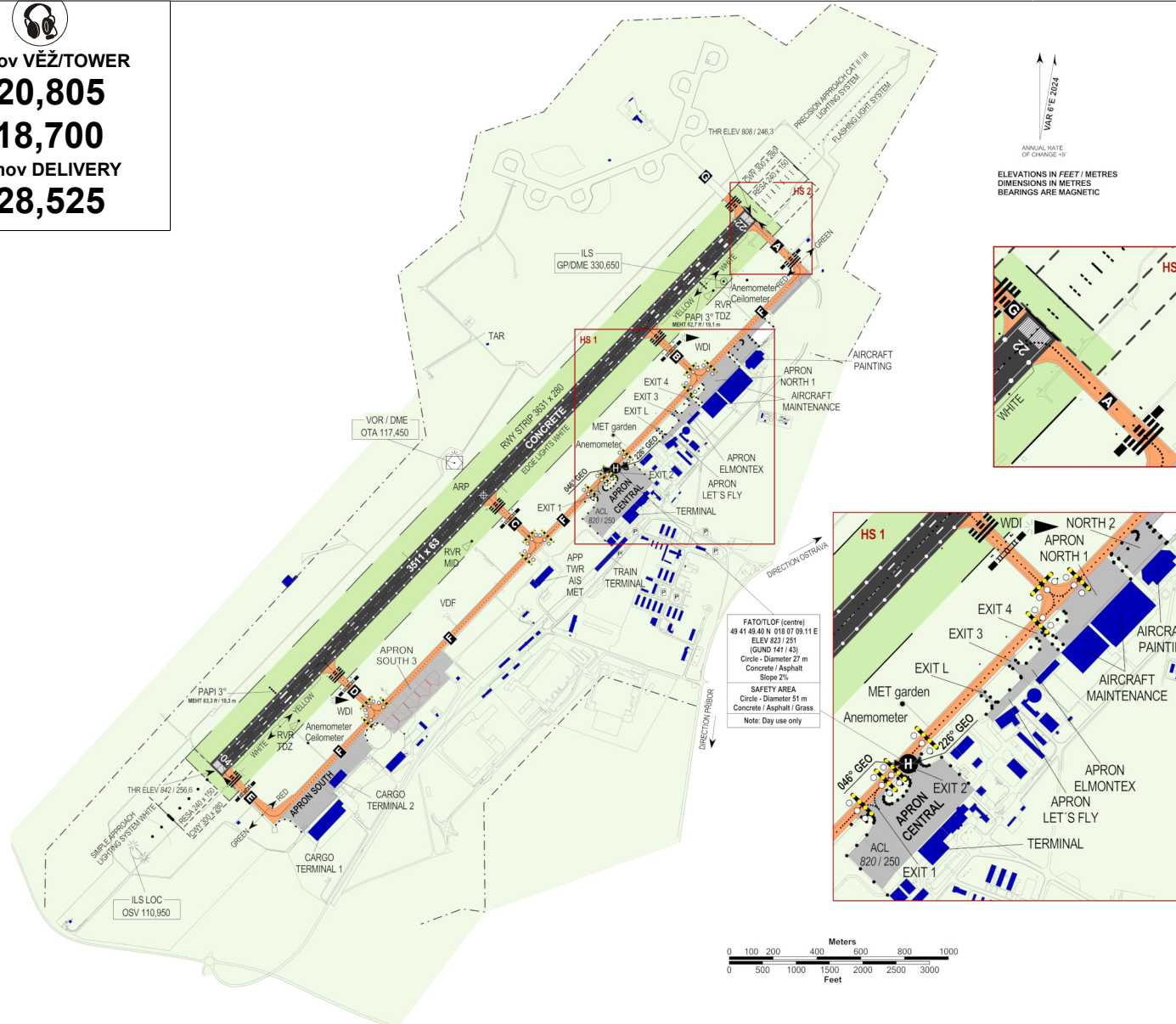
| DESIGNATION | LOCATION | COORDINATES | |
|-------------|-----------------------------|------------------------------|--------------|
| ALFA | Příbor | 49° 39' 00" N 018° 08' 28" E | Holding |
| BRAVO | Studénka (railway overpass) | 49° 42' 17" N 018° 03' 04" E | Holding |
| ECHO | Frýdek Místek (dam) | 49° 39' 48" N 018° 19' 13" E | Entry / exit |
| FOXTROT | Šenov (church) | 49° 47' 10" N 018° 22' 29" E | Entry / exit |
| NOVEMBER | Hrabyně | 49° 52' 59" N 018° 03' 17" E | Entry / exit |
| SIERRA | Hodslavice | 49° 32' 20" N 018° 01' 25" E | Entry / exit |
| TANGO | Bělotín | 49° 35' 06" N 017° 47' 59" E | Entry / exit |
| WHISKEY | Vrchy (church) | 49° 44' 57" N 017° 52' 19" E | Entry / exit |

| ARRIVAL ROUTES | WAYPOINT SEQUENCE |
|------------------|-------------------|
| NOVEMBER 1 | NOVEMBER - BRAVO |
| FOXTROT 1 | FOXTROT - ALFA |
| ECHO 1 | ECHO - ALFA |
| SIERRA 1 | SIERRA - ALFA |
| TANGO 1 | TANGO - BRAVO |
| WHISKEY 1 | WHISKEY - BRAVO |
| DEPARTURE ROUTES | WAYPOINT SEQUENCE |
| NOVEMBER 1 | BRAVO - NOVEMBER |
| FOXTROT 1 | ALFA - FOXTROT |
| ECHO 1 | ALFA - ECHO |
| SIERRA 1 | ALFA - SIERRA |
| TANGO 1 | BRAVO - TANGO |
| WHISKEY 1 | BRAVO - WHISKEY |

LKMT OSTRAVA/Mošnov



Mošnov VĚŽ/TOWER
120,805
118,700
Mošnov DELIVERY
128,525



Airport Ostrava Ltd.
 742 51 Mošnov, č.p. 401,
 ☎ +420 597 471 137,
 ☎ +420 597 471 122,
 ☎ +420 597 471 121,
 operation@airport-ostrava.cz,
 handling@airport-ostrava.cz,
 AFTN: LKMTYDYX,
 SITA: OSRCZ7X, SITA: OSRCZKO

Letiště Ostrava, a.s. (Handling agent for all flights) - ☎ +420 597 471 137,
 ☎ +420 597 471 121,
 handling@airport-ostrava.cz,
 SITA: OSRCZ7X (FREQ: 131,430, call sign OSTRAVA HANDLING)
 Eurojet (Handling agent for private and business flights) - ☎ +420 233 343 362,
 ☎ +420 233 343 102,
 ops@eurojet-service.com,
 SITA: PRGOOCR

- H24
 - Jet A-1, AVGAS 100 LL
 - on request
 - own hangar only limited, otherwise according to possibility of hangar of JOB-AIR Technic, a.s. ☎ +420 556 789 111,
☎ +420 556 789 122,
jobair@jobair.cz Hangar space for GA aircraft - Hangar ELMONTEX a.s. ☎ +420 702 209 570,
operation@elmontex.cz
 - Minor repairs only, limited Maintenance of aircraft is provided by company : JOB-AIR Technic, a.s., International aerodrome Ostrava, Gen. Fajtlva 370, 742 51 Mošnov, ☎ +420 556 789 111,
☎ +420 556 789 122, jobair@jobair.cz ELMONTEX, a.s. repair services and maintenance of GA aircraft carried out by ELMONTEX a.s., ☎ +420 725 808 310,
operation@elmontex.cz
 - Hotels in Kopřivnice, Ostrava and Nový Jičín
 - Fast-food and coffee house with limited opening hours
 - City bus No. 333, train, taxi and public transport, car rent
- Customs and immigration clearance: H24

| RWY | Magnetic direction | RWY dimensions | Strength | TORA | TODA | ASDA | LDA |
|-----|--------------------|----------------|----------------|------|------|------|------|
| 04 | 040° | 3511 x 63 | PCN 50/R/B/W/T | 3511 | 3811 | 3511 | 3511 |
| 22 | 220° | 3511 x 63 | PCN 50/R/B/W/T | 3511 | 3811 | 3511 | 3511 |

Intentionally left blank